



Proven Performance
TEXAS  **ALLIANCE SALE**



3 . 1 7 . 2 0 2 6
BLOOMINGTON, TEXAS

BRIGGS RANCHES, TRAYLOR DIVISION IN BLOOMINGTON, TX
Located 13 Miles South of Victoria, TX

Coming 2 Year Old Bulls
BRANGUS, ULTRABLACK & SANTA GERTRUDIS
PLUS 125 Commercial Females

T E X A S

WELCOME CATTLE PRODUCERS AND FRIENDS

Dear Friends,

On behalf of the Texas Alliance Sale group, I would like to welcome you to our annual bull and commercial female sale to be held on March 17, 2026, at Briggs Ranches Traylor Division. Our group consists of Briggs Ranches, Harris Riverbend Farms, San Jose Cattle, and Cavender Ranches. These consigners represent a great set of Brangus and Santa Gertrudis bulls, plus a good set of commercial females. The bulls being offered have been sorted on many times in their lives; only the bulls that meet a strict culling program make it to this sale. Needless to say, you can purchase with confidence that these bulls will perform.

We are currently entering unbelievable times in the cattle business. Never before in my lifetime have I seen calves bring what they do today. Replacement females are hard to find and have increased in value, also.

Spring is near, hopefully green grass and rain will come. Now is the time to upgrade your bull battery and look for replacement females.

On behalf of the Briggs Family and staff, we welcome you to the ranch and hope to see you here on March 17th.

If we can be of any assistance in any way, please do not hesitate to contact us.

Su Amigo,

Joe Jones

General Manager of Briggs Ranches — 361-550-0994

Tol Cawley, Assistant Manager — 936-581-1174

Kelsey Cawley — 361-649-9778

Justin Brown — 210-422-9855

Mark Cowan — 903.495.4522

Dustin Kennedy — 903.810.2413

Joe Cavender — 903.571.1209

Todd Harvey — 386.288.8059



ALLIANCE

Bloomington, Texas

SCHEDULE OF EVENTS

MONDAY, MARCH 16TH

2:00 PM Cattle available for viewing

TUESDAY, MARCH 17TH

8:00 AM Cattle available for viewing

9:30 AM South Texas Cowboy Brunch

11:00 AM Texas Alliance Bull Sale

Commercial female sale to follow immediately

TEXAS  ALLIANCE SALE



SALE DAY CONTACTS

BRIGGS RANCHES

Joe Jones - General Manager: (C) 361.550.0994
 Kelsey Cawley: (O) 361.897.1337 • (C) 361.649.9778
 Tol Cawley: (O) 361.897.1337 • (C) (936)581-1174

XB

HARRIS RIVERBEND FARM

David & Laurie Harris:
 (O) 817.641.4771 • (H) 817.641.4159 • (C) 817.996.5866
 Abrian Harris: (C) 817.517.3006

H

CAVENDER RANCHES

Joe Cavender - Owner • 903.571.1209
 Dustin Kennedy - General Manager • 903.810.2413
 Mark Cowan - Marketing and Customer Service • 903.495.4522
 Todd Harvey - Marketing and Customer Service • 386.288.8059
 Aubrey McClure - Registered Cattle Manager • 870.613.1289



AUCTIONEER

Doak Lambert • 972.839.6485

RINGMEN

Jim Banner - Southern Livestock Standard
 Charlie Wood - Gulf Coast Cattleman
 Ralph Means - Weekly Livestock Reporter
 Bret Griffith - Special Assignment

HOTEL ACCOMODATIONS

Homewood Suites - 361.578.1900
 Comfort Inn & Suites - 361.894.6480
 Lonestar Inn & Suites - 361.579.0225
 La Quinta - 361.237.3051 *Ask for the front desk and the BRIGGS SALE*

CATTLE TRANSPORTATION

Darrell Pitchford - 903.388.2288

LOAD OUT

Cattle will be loaded out at the conclusion of the sale and after proper settlement is made.

HEALTH PAPERS

Health papers will be provided on each lot in the sale suitable for interstate shipment.

CATALOG PRODUCED BY

Cattle Solutions
 979.820.8362 • kyle@cattlesolutions.com



VIDEOS PRODUCED BY

Ideal Video Productions, LLC
 254.319.5349 • wade@idealvideoproductions.com



VIDEOS OF SALE CATTLE ARE AVAILABLE AT

www.idealvideoproductions.com
www.briggsranches.com
www.cavenderranches.com

TEXAS  **ALLIANCE SALE**

SIGHT UNSEEN PURCHASE OPTION

If you are unable to attend the auction in person or watch DVAuctions internet broadcast, simply contact the marketing team:

- Describe your selection criteria and the type of bull(s) and/or female(s) you wish to purchase and your price range.
- You pay only the bid price, just as if you were bidding in person.
- We will call after the sale to confirm your purchase and you can confirm your payment method and arrange shipping.
- You decide if the animal meets your criteria upon delivery. If you are not happy with your purchase, you don't own it.



2026 BULL SALE PARTICIPANTS

B5M BRANGUS

Brian McKinney | Jacksonville, TX

BRIGGS RANCHES

Bloomington, TX

CAVENDER BRANGUS

Joe Cavender | Tyler, TX

CLEAVIE ALLEN

Crockett, TX

EAST TEXAS CATTLE CO

David & Noemi Cannon | Bullard, TX

GOLD CREEK BRANGUS

Oskar Juarez | Marietta, GA

HARRIS FARMS

David & Lauri Harris | Cleburne, TX

KATHERINE ALLEN

Crockett, TX

KLEIN B/K BEEF

Barrett Klein, John Bellinger | Boerne, TX

LAS PALOMAS RANCH

Pepe Medina | Marietta, GA

PENNRIDGE RANCH

Pete Deleeuw | Paige, TX

SAN JOSE CATTLE CO

Perry & Abrian Bass | Kingsville, TX

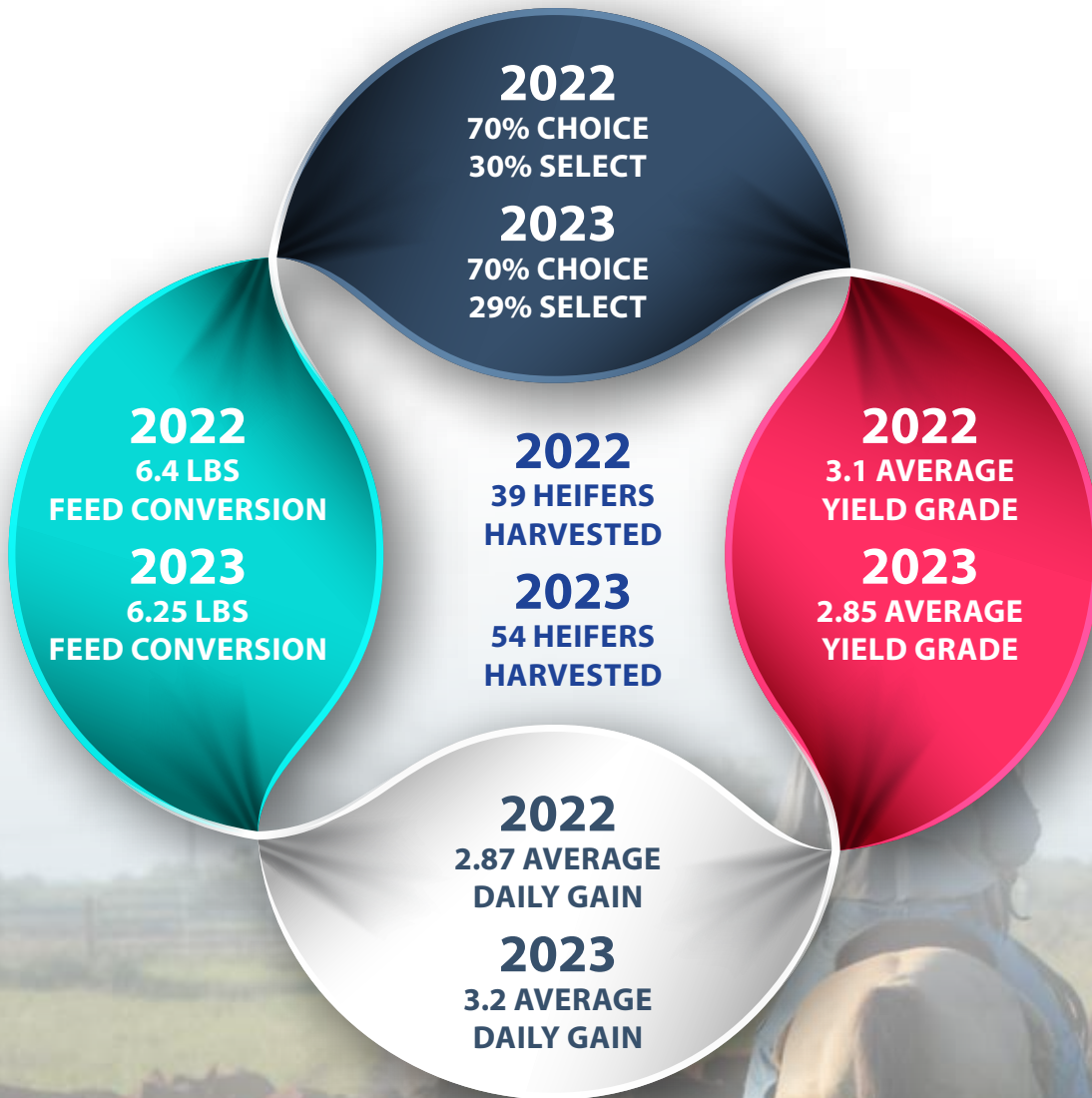
STALWART RANCHES

Mike Manners | Crockett, TX



BRIGGS RANCHES SLAUGHTER HEIFER DATA

In today's cattle industry there are many top qualities that the commercial cattlemen look for and strive for on purchasing their replacement females or replacement bulls. A lot of those qualities consists of performance, structure, carcass data. These three things have been Briggs Ranches top priorities since the very beginning. We have been striving for years to be able to produce the top-quality bulls and females for the commercial cattlemen on structural soundness and performance data. For years, we have been collecting performance data and have set strict criteria on our bulls and females. For the last year and half, we have been focusing on feedlot performance and carcass data on our females. It has been a long time coming and the results are here.



TERMS & CONDITIONS

Bidding

Each animal will be sold to the highest bidder without reserve. The auctioneer will settle any disputes as to bids and his decision on such matters shall be final.

Terms

Each animal becomes the risk of the purchaser as soon as sold, but it shall be the obligation of the seller to see that animals are fed and cared for until loaded for shipment or until the expiration of 48 hours after the sale, whichever occurs sooner. After 48 hours a maintenance fee of \$5.00 per day will be assessed until pickup, unless AMS arranges shipment.

Certificate of Registry

A transferred certificate of registry will be furnished to the purchaser for each registered bull or registered female once proper settlement has been made.

Health

Health papers suitable for interstate shipment will be furnished on all animals.

Announcements

Any changes from the information of any kind in this catalog will be provided in a sale day supplement sheet or announced from the auction block and such information shall take precedence over cataloged information.

Breeding Guarantee

1. All animals are guaranteed to be breeders with the exception of: a) calves under 12 months of age; b) animals shown by purchaser after sale in which the guarantee (if any) shall be between the seller and the buyer; c) injury or disease occurring after the sale; d) gross negligence or willful misconduct on the part of the purchaser; e) death by any reason.
2. Any bull which settles cows by natural service and passes a fertility test made by competent veterinarians, mutually agreed upon by the buyer and seller, during any six month period of trial (provided for in paragraph 2 of the section of these sale terms and conditions entitled "Options and Privileges of Return or Adjustment") shall be considered a breeder. All partial interest bulls are guaranteed to produce freezeable quality semen.
3. Safe in calf females have been examined by competent personnel and are so guaranteed.
4. Exposed females have been exposed but are not guaranteed to be safe in calf.

5. Open females have not been served and are so guaranteed.

Pregnancy Determination

The females in this sale noted safe in calf have been determined pregnant by physical palpation. Our best estimate of service sire will be given in the case of the females with both an A.I. sire and a natural breeding sire.

Options and Privileges of Return or Adjustment

1. All claims for adjustment or refund must be made in writing within six months of the sale date.
2. In the event an animal is claimed to be a non-breeder, the animal may be returned to the seller if in good condition and complying with the health requirements of Texas. The seller shall be entitled to a six month trial following the return of the animal in which to prove that the animal is a breeder. If at the end of six months the seller is unable to prove the animal is a breeder, the seller shall at the option of the buyer replace the animal with another of equal value or issue a credit for the initial selling price. If the seller proves the animal to be a breeder, it shall be the obligation of the purchaser to take delivery of the animal and pay all expenses incurred for transportation.
3. If a bull is sold and at a later date proves not to be eligible for registration under association rules, the seller shall be obligated to make a satisfactory adjustment on the purchase price to the buyer, refund the purchase price or issue a credit for the initial selling price upon the return of the animal to the farm of the seller.
4. If an animal is sold and through DNA is proven to have incorrect parentage as represented by the certificate of registration, and for which the parentage can be determined, the seller shall be obligated to make a satisfactory adjustment on the purchase price to the buyer, refund the purchase price or issue a credit for the initial selling price upon the return of the animal to the farm of the seller.

Rights and Obligations

1. The above terms and conditions of sale shall constitute a contract between the buyer and seller of each animal and shall be equally binding on both. Other than the guarantees and warranties stated above, no other warranties or guarantees are expressed or implied. Each sale or resale of an animal constitutes a separate transaction.
2. No person connected with the management of the sale assumes no liability, legal or otherwise.

Watch & bid online for FREE at

DVAuction
Broadcasting Real-Time Auctions

Can't make the sale? Bid from home with DV Auction's "real-time" internet bidding service!

Buying online is as easy as 1, 2, 3...

1. Create an account at www.dvauction.com under the "register" tab
2. Apply for bidding approval by clicking on the "details" tab at least 24 hours prior to the auction-a DV representative will notify you once you have been approved
3. Tune in for the sale and make your purchases!

After the sale, contact the sale manager or owner to arrange transportation and payment. **High speed internet** is required for successful bidding-be sure to check the lag-time monitor in the top left corner to ensure real-time broadcasts.

Proxy Bidding-if you can't make time to watch the sale, register a proxy bid and let our system represent your bid while you're away. Look for the "proxy bid" tab on the auction listing, and fill in your maximum bids. We'll handle the rest!



Having troubles? During the auction, you can type a message to the operator at any time for assistance. Our full-time support team can also always be reached at (402) 474-5557.

DVAuction
Broadcasting Real-Time Auctions

Full Service Livestock Marketing

Video - Photography - The Stock Exchange - Ring Service - Banner Ads - Onsite Viewing Service

DATA KEY SANTA GERTRUDIS

Lot Number →  **BRIGGS 217K3 ET**  **Registered Name** followed by Registration# /Animal ID / Date of Birth / Horn-Polled Status

20226867 • 217K3 • 09/15/2022 • Horned

Three Generation Pedigree and Consignor Name →

KR1195/15 KR 545/12
KR 245/10 F1

20183702 **BRIGGS RANCHES** DS PHOENIX 611
DSR CHERRY 923 1B DEAN-HARRIS 022/4 (ET) 022/4
ROBERTO BRIGGS 072/13 BRIGGS 580/0
BRIGGS 092/10

20191968 **BRIGGS 217G** MR. DOUBLE TT RICK 10/9
MYERS 14/10 MISS DOUBLE TT 110

	BW	WW	YW	MILK	TM	SC	HCW	REA	MARB	FT
EPDs	0.5	.17	.21	-.1	12	0.39	2	0.04	0.15	-0.006
Acc	.19	.20	.27	.09	—	.10	.10	.25	.36	.39
%Rank	75%	20%	25%	60%	20%	45%	30%	45%	20%	20%



GROWTH, CARCASS

Footnotes → A Full Brother to Lot 1 and he is just as good. This Chosen one KR 651/18 son has a REA/CWT 1.14, IMF 4.5 and ranks in the top 45% in 12 EPD traits

Disposition ★★★★★ **Disposition Score:** Followed by Actual Birth Weight and Adjusted Scrotal. See bottom of page for description and scoring table.

Act BW 70
Adj SC 34.1

DATA KEY BRANGUS

Lot Number →  **CB BIG HOSS 313K3**  **Registered Name**

R10508941 • 313K3 • P • GEN: 1 • 1/26/2022 • E

Three Generation Pedigree and Consignor Name →

BWCC BIG TOWN 192B16 MC NUFF SAID 889T50
BWCC MS REVELATION 192W8

MC BIG HOSS 541G50 S A V RESOURCE 1441
UB10449616 MC MS RESOURCE 541A4 MC MS ROCK STAR 541X10

CAVENDER BRANGUS BWCC BIG TOWN 192B16
MC BIG TEX 541F2 MC MS RESOURCE 541A4

BWCC MS BIG TEX 313H6 MC SPECIAL FORCES 924Y4
R10452031 RBM MS SPECIAL FORCES 313A RBM MS RITE DIRECTION 313X3

	CED	BW	WW	YW	MILK	SC	REA	IMF	HPreg	STAY	MCW
EPDs	4.7	0.7	.39	.65	11	1.21	0.59	0.34	10.63	3.06	4.24
Acc	.31	.42	.38	.31	.23	.33	.37	.44	.16	.10	.21
%Rank	60%	60%	10%	15%	25%	10%	10%	15%	1%	10%	75%

BIG GROWTH, MILK, CARCASS, INDEXES

Footnotes → He is big ribbed and big topped with a classic profile. His sire is a full brother to Five Star and Big City. His dam is a daughter of the famous 313A donor. He posts EPDs projecting big growth, Milk, SC, carcass and Indexes.

Disposition ★★★★★ **Disposition Score:** Followed by Actual Birth Weight and Adjusted Scrotal. See bottom of page for description and scoring table.

Act BW 90
Adj SC

DISPOSITION SCORING

A disposition score has been included for every bull selling. 5 stars being the best and 1 being the worst. Please note the explanation of our scoring system below and contact us with any questions you may have.

DISPOSITION SCORING TABLE	★★★★★	★★★★	★★★	★★	★
	Extremely gentle, difficult to get out of the way.	Calm but moves away from you when you get close to them.	Calm but moves away from you sooner than a 4 (Larger Flight Zone).	Nervous and moves away rapidly when you enter their flight zone.	Extremely nervous and/or aggressive temperament. Thrashes about when confined and may attach the scorer in the pen.*
				*There are no one star ranking in this sale as they have been culled.	



BRIGGS 051M3

20246790 • 051M3 • 10/11/2024 • Horned



B14
 BRIGGS 147G2
 20192779
 11 BRIGGS 147E
BRIGGS RANCHES
 TARZAN BRIGGS 651D2
BRIGGS 051H3
 20207767
 BRIGGS 9051C

AJH 126/0
 HEFTE RANCH 804
 KJ 11/3
 BRIGGS 626/10
 BRIGGS 052/11
 BRIGGS 124/12
 BRIGGS 551/0
 TF051

	BW	WW	YW	MILK	TM	SC	HCW	REA	MARB	FT
EPDs	1	20	20	-1	13	0.41	-2	0.04	-0.09	0.014
Acc	.29	.47	.33	.26	--	.14	.26	.30	.45	.48
%Rank	90%	20%	30%	60%	25%	40%	55%	50%	90%	85%

GROWTH

If you have been looking for the bull that has the total package you have found him. He comes with a total pedigree that has phenotype and performance. Going back to Hefte B14 who has generated over \$300,000 for Briggs. On the bottom side going back to Tarzan Briggs 651D2 who has produced multiple Donors in the breed. Then going back on his maternal side to TF051 who has produces multiple donors her sold in the Briggs Herd. He ranks in the top 20% WW and 30% YW. REA/CWT 1.13. WW Ratio 118. ADJ SC 37.5.

Selling full possession 1/2 semen interest for in-herd use only.

Disposition
 ★★★★★
Act BW
Adj SC
 37.5



LOT 1 | Briggs 051M3



HARRIS 08M

20246550 • 08M • 11/20/2024 • Polled



KR 625/14
 KR912/18
 20183403
 KR 384R/12 2YR
HARRIS FARMS
 KR 921/15
DSR 08/19
 20196316
 DSR 8/0

KR 606R/12
 KR 374/06 2B
 RED ANGUS
 KR 783/08 4A
 KR 800/11
 KR 110N/09 110/09 N6
 DS PHOENIX 611
 HARRIS FARMS 52/6

	BW	WW	YW	MILK	TM	SC	HCW	REA	MARB	FT
EPDs	0.2	9	26	-2	7	0.54	7	0.15	0.11	-0.007
Acc	.36	.46	.34	.27	--	.14	.26	.31	.45	.48
%Rank	65%	55%	20%	75%	60%	10%	15%	20%	35%	20%

CARCASS

An X Factor KR 912/18 son. X Factor has been a major influence in the Harris and Briggs herds. He has generated over \$238,000 in progeny and have major herd sires that have been offered. He ranks in the top 20% REA, 35% Marbling. REA/CWT 1.13, ADJ SC 34

Disposition
 ★★★★★
Act BW
Adj SC
 34.6



LOT 2 | Harris 08M



BRIGGS 344M2

20246473 • 344M2 • 09/23/2024 • Horned



KR651/18(CHOSEN ONE)
HARRIS CHOSEN ONE 5H
 20205955
 HARRIS PERFECTO 5E
BRIGGS RANCHES
 HARCO 1336
BRIGGS 552D
 20166757
 BRIGGS 552/0

KR1195/15
 DSR CHERRY 923 1B
 HARRIS PERFECTO 215/5
 NAF LIGHTNING 5N7
 HARCO T958 (ET) T958
 HARCO T825 (ET) T825
 2S RANCH 3166
 BRIGGS 544/00

	BW	WW	YW	MILK	TM	SC	HCW	REA	MARB	FT
EPDs	-0.1	21	21	6	20	0.42	4	0.17	0.05	-0.007
Acc	.31	.45	.27	.26	--	.14	.25	.26	.38	.41
%Rank	50%	15%	30%	3%	4%	40%	25%	15%	45%	20%

GROWTH

He goes back to Chosen One KR 651/18 on the top side and Harco on the bottom side. His dam Briggs 552D has a 363 day calving interval on 7 head. FERTILTY. He ranks in the top 30% in 12 EPD traits. Top 3% MILK. We cant talk about milk enough. With producers making money at weaning time you need MILK for those big weaning calves. REA/CWT 1.16, ADJ SC 37

Disposition
 ★★★★★
Act BW
Adj SC
 37.8



HARRIS 724M17

20246575 • 724M17 • 11/20/2024 • Scurred



HEFTE RANCH F60
HEFTE RANCH TOUCHDOWN K147 ET
 20216554
 HARRIS GUNS UP 253F14
HARRIS FARMS
 KR 301/15
HARRIS 724K30 ET
 20227601
 HARRIS FARMS 724C

HEFTE RANCH D25
 HEFTE RANCH C21
 HARRIS GUNS UP 216/5
 HARCO T607 (ET) T607
 KR 545/12
 KR 316/08 3A
 HARCO T958 (ET) T958
 HARRIS FARMS 003/1

	BW	WW	YW	MILK	TM	SC	HCW	REA	MARB	FT
EPDs	-0.1	33	39	2	22	0.47	14	0.25	0.17	0.031
Acc	.33	.44	.32	.22	--	.11	.26	.29	.45	.48
%Rank	50%	2%	3%	25%	2%	25%	2%	4%	25%	>95%

GROWTH

He is a Touchdown son Hefty K147 and out of a first calf heifer. He ranks in the top 25% in 12 EPD traits. Top 25% Milk with a WW ratio 121, REA/CWT 1.15, ADJ SC 38

Disposition
 ★★★★★
Act BW
Adj SC
 38.6



HARRIS 117M4

P20246558 • 117M4 • 12/28/2024 • Horned



KR 328/15

KR 177/10
KR 666/09 4A

KR BANDITO 254/20

20205003 KR450/16

HARRIS FARMS

QVF MAVERICK 82H10

KR 132R/12
KR 339R/08 R3
KR651/18(CHOSEN ONE)
HARRIS 82/4

HARRIS 117K7 ET

20227581 HARRIS 49/4

CB BEAR 30/2
HARCO 1249

	BW	WW	YW	MILK	TM	SC	HCW	REA	MARB	FT
EPDs	-0.1	20	22	3	17	0.5	4	0.17	0.23	-0.005
Acc	.41	.45	.33	.23	--	.13	.26	.30	.45	.48
%Rank	50%	20%	25%	15%	10%	20%	25%	15%	15%	20%

GROWTH

A KR Bandito 254/20 son and out of a first calf heifer. He ranks in the top 35% 14 EPD traits. Top 15% Milk with a WW ratio of 116. REA/CWT 1.15, ADJ SC 40.

Commercial Bull Only

Disposition

★★★★

Act BW

73

Adj SC

40.7



HARRIS 907M

20246581 • 907M • 10/28/2024 • Polled



KR 625/14

KR 606R/12
KR 374/06 2B

KR912/18

20183403 KR 384R/12 2YR

HARRIS FARMS

KR395/18

RED ANGUS
KR 783/08 4A
KR 1255R/14
KR 62/09 2A

MS HARRIS TRIFECTA 907J

20216109 SCHUSTER T907/1 ET

KR 921/15
RED DOC 5183

	BW	WW	YW	MILK	TM	SC	HCW	REA	MARB	FT
EPDs	-0.2	22	43	1	16	0.69	15	0.26	0.22	0
Acc	.36	.47	.35	.26	--	.13	.27	.32	.46	.49
%Rank	45%	15%	2%	35%	15%	2%	1%	4%	20%	60%

FERTILITY AND GROWTH

A X Factor KR 912/18 son and goes back to Trifecta KR 395/18 on the bottom side. His dam Harris 907J has a 384 day calving interval on 2 head. He ranks in the top 35% in 11 EPD traits. YW ratio 115, REA ratio 111. REA/CWT 1.13, ADJ SC 36

Disposition

★★★★

Act BW

36.2

Adj SC

36.2



BRIGGS 373M4

20246810 • 373M4 • 10/15/2024 • Horned



BRIGGS BOOM 015/12

HARRIS FARMS 46/6
BRIGGS RANCH 062/7

BRIGGS 14G

20192691 BRIGGS 14D

BRIGGS RANCHES

BRIGGS 1525D

BRIGGS 509/12
BIERI FARMS 14
BRIGGS 638/9
CB 1525

BRIGGS 373F5

20187540 069 BRIGGS 373D2

RDF HEAD'S UP 1038
BRIGGS 561/0

	BW	WW	YW	MILK	TM	SC	HCW	REA	MARB	FT
EPDs	1.3	15	17	-7	4	0.27	-5	-0.04	-0.02	-0.012
Acc	.29	.47	.33	.26	--	.13	.26	.30	.45	.49
%Rank	95%	35%	40%	>95%	80%	90%	75%	80%	65%	20%

GROWTH

He is a Grandson to Briggs Boom 015/12. Ranks in the top 35% in WW. REA/CWT 1.14, ADJ SC 34

Disposition

★★★★

Act BW

34.8

Adj SC

34.8



HARRIS 656M2

20246572 • 656M2 • 12/23/2024 • Polled



HEFTE RANCH F60

HEFTE RANCH D25
HEFTE RANCH C21

HEFTE RANCH TOUCHDOWN K147 ET

20216554 HARRIS GUNS UP 253F14

HARRIS FARMS

KR912/18

HARRIS GUNS UP 216/5
HARCO T607 (ET) T607
KR 625/14
KR 384R/12 2YR

HARRIS 656K

20227595 BRIGGS 656G4

249/5
BRIGGS 097/11

	BW	WW	YW	MILK	TM	SC	HCW	REA	MARB	FT
EPDs	0.2	25	43	2	18	0.49	14	0.24	0.23	0.003
Acc	.40	.44	.31	.22	--	.11	.26	.29	.44	.47
%Rank	65%	10%	2%	25%	10%	20%	2%	5%	15%	60%

FERTILITY AND GROWTH

He is a Touchdown son Hefty K147 and out of a first calf heifer. He ranks in the top 25% in 11 EPD traits. REA/CWT 1.15, ADJ SC 39

Disposition

★★★★

Act BW

74

Adj SC

39.4



HARRIS 660M2

20246573 • 660M2 • 11/07/2024 • Scurred



FC PISTOL 28/0

GUNSLINGER 13/5
HOLLY 20/3

HARRIS GUNS UP 216/5

20152716 HINNANT-FULBRIGHT 9/153

HARRIS FARMS

9108G

SANTA GERTRUDIS MS
RED ANGUS
RED ANGUS
RED ANGUS

HARRIS 660K2

20227759 MS HARRIS NAVIDAD 660H

HARRIS 30/5
TF

	BW	WW	YW	MILK	TM	SC	HCW	REA	MARB	FT
EPDs	-0.5	17	30	2	14	0.56	7	0.14	0.12	0.006
Acc	.35	.39	.28	.24	--	.14	.25	.26	.38	.41
%Rank	35%	25%	10%	25%	20%	10%	15%	20%	30%	85%

BIRTHWEIGHT AND MILK

3/4 Santa Gertrudis X 1/4 Red Angus. He is a Guns Up 216/5 son and out of a first calf heifer. He ranks in the top 35% in 11 EPD traits. Top 25% MILK 35% BW. REA/CWT 1.10, ADJ SC 34

Disposition

★★★★

Act BW

34.6

Adj SC

34.6



HARRIS 9146M

20246587 • 9146M • 11/20/2024 • Scurred



KR 625/14

KR 606R/12
KR 374/06 2B

KR912/18

20183403 KR 384R/12 2YR

HARRIS FARMS

KR 921/15

RED ANGUS
KR 783/08 4A
KR 800/11
KR 110N/09 110/09 N6

DSR 9146

20196326 DOS BROS 306/7

CA/DB COCHISE 3328
DB 231/4

	BW	WW	YW	MILK	TM	SC	HCW	REA	MARB	FT
EPDs	-0.2	18	32	2	15	0.54	12	0.29	0.33	-0.014
Acc	.35	.47	.35	.27	--	.14	.27	.32	.46	.49
%Rank	45%	25%	10%	25%	15%	10%	3%	2%	10%	20%

GROWTH AND MILK

He is a X Factor KR 912/18 and out of DSR 9146 who has a 365 day calving interval on 4 head. He ranks in the top 35% in 12 EPD traits. Top 25% MILK and has a WW ratio 117. REA/CWT 1.15, ADJ SC 35

Disposition

★★★★

Act BW

35.6

Adj SC

35.6

HARRIS 7M2

20246549 • 7M2 • 12/11/2024 • Polled

KR 625/14 KR 606R/12
KR 374/06 2B

KR912/18
20183403

RED ANGUS

HARRIS FARMS
KR 384R/12 2YR
FC PISTOL 28/0
HOLLY 20/3

HARRIS PISTOL 7F
20185670
HARRIS FARMS 7C
HARCO T958 (ET) T958
CSC 7-7

	BW	WW	YW	MILK	TM	SC	HCW	REA	MARB	FT
EPDs	0.4	20	31	-3	11	0.61	6	0.18	0.1	0.002
Acc	.23	.31	.24	.16	--	.07	.11	.23	.31	.34
%Rank	70%	20%	10%	85%	35%	4%	15%	15%	35%	60%

DNA PENDING
Another X Factor KR 912/18 son. He ranks in the top 35% in 10 EPD traits. ADJ SC 40

Disposition ★★★★★
Act BW 72
Adj SC 40

HARRIS 915M

P20246582 • 915M • 11/29/2024 • Horned

KR 328/15 KR 177/10
KR 666/09 4A

KR BANDITO 254/20
20205003

RED ANGUS

HARRIS FARMS
KR 450/16
KR 132R/12
KR 339R/08 R3
KR1195/15
DSR CHERRY 923 1B

MS HARRIS CHOSEN 915K ET
20226135
QVF MS 1323 HARCO 915E1 ET
HARCO 1323
C-P MISS COPPERHEAD 915CS

	BW	WW	YW	MILK	TM	SC	HCW	REA	MARB	FT
EPDs	-0.4	8	18	2	10	0.5	6	0.18	0.26	0.007
Acc	.34	.45	.32	.23	--	.14	.26	.30	.45	.48
%Rank	40%	60%	35%	25%	40%	20%	15%	15%	15%	85%

MILK
A son out of KR Bandito 254/20 and out of a first calf heifer. He ranks in the top 35% in 7 EPD traits. Top 25% in MILK. REA/CWT 1.21, ADJ SC 32

Disposition ★★★★★
Act BW
Adj SC 32.4

HARRIS 09M

20246551 • 09M • 11/06/2024 • Polled

KR 625/14 KR 606R/12
KR 374/06 2B

KR912/18
20183403

RED ANGUS

HARRIS FARMS
KR 384R/12 2YR
SR MPACT 30/F2
SR ARKOMA 30/0

SR MS MPACT 09/H
20207535
ROSE HILL 6/9
J & S HEISMAN
TOWNSEND CATTLE 09/8

	BW	WW	YW	MILK	TM	SC	HCW	REA	MARB	FT
EPDs	-1.3	5	6	2	9	0.53	0	0.12	0.32	0.004
Acc	.35	.46	.33	.27	--	.13	.26	.31	.44	.47
%Rank	10%	75%	75%	25%	50%	15%	45%	25%	10%	60%

BIRTHWEIGHT AND MILK
A X Factor KR 912/18 and out of SR MS MPACT 09/H who has a 384 day calving interval in 2 head. He ranks in the top 35% in 8 EPD traits. Top 10% BW, 25% MILK. WW ratio 109, IMF ratio 113. REA/CWT 1.17

Disposition ★★★★★
Act BW
Adj SC 31.6

HARRIS 2M2

20246547 • 2M2 • 11/18/2024 • Horned

KR 625/14 KR 606R/12
KR 374/06 2B

KR912/18
20183403

RED ANGUS

HARRIS FARMS
KR 384R/12 2YR
SR 710
LJV MASON 0/72
LJV DOLLY 8/48

SR LIV 2/6
20161095
SR 837
SR 444
SR 613

	BW	WW	YW	MILK	TM	SC	HCW	REA	MARB	FT
EPDs	-0.7	9	14	0	9	0.48	1	0.15	0.23	-0.009
Acc	.37	.46	.36	.28	--	.15	.27	.33	.46	.49
%Rank	30%	55%	50%	50%	50%	25%	40%	20%	15%	20%

BIRTHWEIGHT
A another X factor KR 912/18 son and out of SR LIV 2/6 one of our top donors who has generated over \$30,000 in progeny. He ranks in the top 35% in 8 EPD traits. Top 30% BW. REA/CWT 1.17, ADJ SC 37

Disposition ★★★★★
Act BW
Adj SC 37

HARRIS 344M

20246566 • 344M • 11/18/2024 • Scurred

KR 625/14 KR 606R/12
KR 374/06 2B

KR912/18
20183403

RED ANGUS

HARRIS FARMS
KR 384R/12 2YR
RED DOC DIABLO 6306
RED DOC 3167

WR 344H
20198150
MISS DOUBLE TT 40
MR DOUBLE TT ANCHOR
LCC 810/3

	BW	WW	YW	MILK	TM	SC	HCW	REA	MARB	FT
EPDs	-0.3	3	17	-2	4	0.5	6	0.2	0.22	-0.009
Acc	.35	.46	.34	.27	--	.13	.26	.31	.45	.48
%Rank	45%	80%	40%	75%	80%	20%	15%	10%	20%	20%

CARCASS
A X Factor KR 912/18 son. He ranks in the top 10% REA, and 20% IMF, REA/CWT 1.22, ADJ SC 41

Disposition ★★★★★
Act BW
Adj SC 41

HARRIS 038M

P20246553 • 038M • 12/28/2024 • Horned

HEFTE RANCH F60 HEFTE RANCH D25
HEFTE RANCH C21

HEFTE RANCH TOUCHDOWN K147 ET
20216554
HARRIS GUNS UP 253F14
HARRIS GUNS UP 216/5
HARCO T607 (ET) T607

HARRIS FARMS
KR 921/15
HARRIS FARMS 1524

DP MISS COCO CHANEL 038K7
20223720
MISS GRANDVIEW G038
C-P COPPERHEAD 915C4
GRANDVIEW 5121

	BW	WW	YW	MILK	TM	SC	HCW	REA	MARB	FT
EPDs	-0.7	18	25	3	16	0.56	8	0.14	0.18	0.004
Acc	.40	.44	.31	.22	--	.12	.26	.28	.44	.47
%Rank	30%	25%	20%	15%	15%	10%	10%	20%	25%	60%

BIRTHWEIGHT, MILK AND BIG GROWTH
A Touchdown Hefter K147 son and out of a first calf heifer. He ranks in the top 35% in 13 EPD traits. Top 30% BW, 15% MILK. REA/CWT 1.21

Disposition ★★★★★
Act BW 65
Adj SC 31.3



HARRIS 253M20

20246564 • 253M20 • 12/31/2024 • Horned



HEFTE RANCH F60

HEFTE RANCH D25
HEFTE RANCH C21

HEFTE RANCH TOUCHDOWN K147 ET

20216554

HARRIS GUNS UP 253F14

HARRIS GUNS UP 216/5
HARCO T607 (ET) T607

HARRIS FARMS

KR912/18

KR 625/14
KR 384R/12 2YR

HARRIS 253K25

20227587

HARRIS DERRINGER 253F50

HARRIS 17/4
HARRIS FARMS 1518

	BW	WW	YW	MILK	TM	SC	HCW	REA	MARB	FT
EPDs	0.4	27	39	1	18	0.53	13	0.23	0.2	0.015
Acc	.41	.45	.32	.22	--	.12	.26	.29	.45	.48
%Rank	70%	4%	3%	35%	10%	15%	2%	10%	20%	85%

BIG GROWTH AND BIG MILK

A Touchdown Hefter K147 son and out of a first calf heifer. He ranks in the top 35% in 12 EPD traits. TOP 1% MILK. REA/CWT 1.16, ADJ SC 35

Disposition

★★★★

Act BW

74

Adj SC

35.6



SJ MR Mescalero 621M

20244746 • 621M • 09/03/2024 • Polled



KR651/18(CHOSEN ONE)

KR1195/15
DSR CHERRY 923 1B

HARRIS Mescalero 724K13 ET

20226295

HARRIS 1323 724F29

HARCO 1323
HARRIS 36/4

SAN JOSE CATTLE CO

BRIGGS 607E3

KR 97/10
NAVIDAD RANCH NR607

BRIGGS 621H9

20207361

556/14

BRIGGS 631/5
BRIGGS 609/9

	BW	WW	YW	MILK	TM	SC	HCW	REA	MARB	FT
EPDs	0.4	19	22	4	17	0.33	3	0.11	0.05	0.012
Acc	.41	.46	.27	.23	--	.13	.25	.24	.37	.39
%Rank	70%	20%	25%	10%	10%	75%	30%	30%	45%	85%

MILK

A HARRIS Mescalero 724K13 son. He ranks in the top 35% in 10 EPD traits. Top 4% MILK with a WW ratio of 111, ADJ SC 34

Disposition

★★★★

Act BW

80

Adj SC

34.3



BRIGGS 147M2

20246800 • 147M2 • 10/12/2024 • Horned



BRIGGS BOOM 015/12

HARRIS FARMS 46/6
BRIGGS RANCH 062/7

BRIGGS 14G

20192691

BRIGGS 14D

BRIGGS 509/12
BIERI FARMS 14

BRIGGS RANCHES

HARRIS FARMS 190E

KR 921/15
HARRIS FARMS 1524

BRIGGS 147H

20203467

BRIGGS 147F

STEPPI'S YOSEMITE 17C
BRIGGS 659/11

	BW	WW	YW	MILK	TM	SC	HCW	REA	MARB	FT
EPDs	0.3	27	36	-2	16	0.42	7	0.13	0.22	0.014
Acc	.29	.46	.33	.25	--	.14	.26	.30	.45	.48
%Rank	65%	4%	4%	75%	15%	40%	15%	25%	20%	85%

GROWTH AND CARCASS

A Grandson of Briggs Boom 015/12. He ranks in the top 25% in 8 EPD traits. WW ratio 115, YW ratio 114, IMF ratio 117. ADJ SC 37

Disposition

★★★★

Act BW

74

Adj SC

37.6



HARRIS 1230M

20246583 • 1230M • 10/11/2024 • Polled



KR 625/14

KR 606R/12
KR 374/06 2B

KR912/18

20183403

KR 384R/12 2YR

RED ANGUS
KR 783/08 4A

HARRIS FARMS

RED DOC NEVER BETTER ET 7457

RDF SANCHO'S NEVER BEFORE 1136
RDF BONITA 8017

QVF MS NEVER BETTER 1230J

20215971

WENDT 1230

777 411 VEGAS
HARRIS 43/3

	BW	WW	YW	MILK	TM	SC	HCW	REA	MARB	FT
EPDs	0	18	35	0	13	0.52	12	0.27	0.16	-0.019
Acc	.36	.46	.34	.26	--	.13	.27	.32	.45	.48
%Rank	55%	25%	5%	50%	25%	15%	3%	3%	25%	10%

GROWTH AND CARCASS

A X Factor KR 912/18 son and out of QVF MS NEVER BETTER 1230J who has a 351 day calving interval on 3 head. He ranks in the top 25% in 10 EPD traits. REA/CWT 1.12

Disposition

★★★★

Act BW

80

Adj SC

30.8



SJ MR MAVERICK 772M

20244744 • 772M • 08/29/2024 • Polled



KR651/18(CHOSEN ONE)

KR1195/15
DSR CHERRY 923 1B

QVF MAVERICK 82H10

20200392

HARRIS 82/4

FC PISTOL 28/0
CSC 7-7

SAN JOSE CATTLE CO

RED DOC SANCHO ET 3307

RDF SANCHO 7-216
OLIVAREZ RANCHES 1/921

2/772

20217584

OLIVAREZ 6/608

OLIVAREZ RANCH 7/281
OLIVAREZ 0/387

	BW	WW	YW	MILK	TM	SC	HCW	REA	MARB	FT
EPDs	0.4	12	16	-2	8	0.4	0	0.06	0.3	-0.017
Acc	.41	.46	.31	.23	--	.13	.26	.28	.42	.44
%Rank	70%	45%	40%	75%	55%	45%	45%	45%	10%	10%

CARCASS

A QVF MAVERICK 82H10 son. Top 10% Marbling. ADJ SC 35

Disposition

★★★★

Act BW

74

Adj SC

35.1



BRIGGS 002M

20246779 • 002M • 10/02/2024 • Horned



B14

AJH 126/0
HEFTE RANCH 804

BRIGGS 147G2

20192779

11 BRIGGS 147E

KJ 11/3
BRIGGS 626/10

BRIGGS RANCHES

RED DOC 3081

SR 58/0
RDF 9173

BRIGGS 634E

20176179

BRIGGS 669/11

BRIGGS 516/5
BRIGGS 634/1

	BW	WW	YW	MILK	TM	SC	HCW	REA	MARB	FT
EPDs	0.8	16	22	-4	8	0.4	1	0.05	-0.01	-0.013
Acc	.30	.47	.32	.27	--	.14	.26	.30	.45	.48
%Rank	85%	30%	25%	90%	55%	45%	40%	45%	60%	20%

GROWTH

A Grandson of Hefta B14. He ranks in the top 30% WW and 25% YW. ADJ SC 34

Disposition

★★★★

Act BW

80

Adj SC

34.8



BRIGGS 124M

20246796 • 124M • 10/16/2024 • Horned



BRIGGS BOOM 015/12

HARRIS FARMS 46/6
BRIGGS RANCH 062/7

BRIGGS 48E

20176032

BRIGGS 004/8

CHAPS LONESTAR 107 107/2

BRIGGS RANCHES

BRIGGS 016/0

MISS KATE 007

BRIGGS 030/5

BRIGGS 046/5

BRIGGS 124C

20154409

BRIGGS 099/10

BRIGGS 028/5

BRIGGS 124/2

Bal Idx
95%

C/C Idx
>95%

Term Idx
70%

	BW	WW	YW	MILK	TM	SC	HCW	REA	MARB	FT
EPDs	-0.2	5	7	-1	6	0.21	-7	-0.05	-0.03	-0.013
Acc	.30	.47	.32	.27	--	.14	.26	.29	.45	.48
%Rank	45%	75%	70%	60%	70%	>95%	85%	85%	70%	20%

BIRTHWEIGHT

A Grandson Of Briggs Boom 015/12 with Chaps Lone Star and Partner in his pedigree. REA/CWT 1.12

Disposition

★★★★

Act BW

Adj SC
30.9



BRIGGS 1256M

20246850 • 1256M • 10/11/2024 • Horned



B14

AJH 126/0
HEFTE RANCH 804

BRIGGS 147G2

20192779

11 BRIGGS 147E

KJ 11/3

BRIGGS RANCHES

CIRCLE A LONE RANGER

BRIGGS 626/10

RANGER 975

DSR LADY SHERMAN 45/11

20176697

WENDT 9449

WENDT 7084

WENDT 8727

Bal Idx
35%

C/C Idx
50%

Term Idx
25%

	BW	WW	YW	MILK	TM	SC	HCW	REA	MARB	FT
EPDs	0.8	24	35	0	15	0.38	5	0.04	0.03	0.016
Acc	.30	.47	.31	.26	--	.12	.26	.28	.44	.47
%Rank	85%	10%	5%	50%	15%	55%	20%	50%	50%	95%

GROWTH

A Grandson of Hefte B14. He ranks in the top 35% in 6 EPD traits. WW Ratio 114, YW 113, ADJ SC 39

Disposition

★★★★

Act BW

Adj SC
39.4

TEXAS ALLIANCE SALE

X B

H



BRANGUS CATTLE





Lot 25 & 27 Sire | QVF No Doubt 30H15



LOT 26 | CB Growth Fund 468M70

25 **BRIGGS NO DOUBT 1302M9** **GGP**
 R10573981 • 1302M9 • P • GEN: 1 • 9/20/2024 • E
 NEVER SURRENDER OF SALACOA 803D9 MC BOULDER 889Z14
 MS BRINKS LOMBARDI 803S25 **Gen. Code**

QVF NO DOUBT 30H15
 R10462487 T3 MS THREE D 30D **Term Idx**
 2.97
 20%

BRIGGS RANCHES
 TJM THREE D 302A
 MS SALACOA ATLANTA 30B5
 CB CAPITAL GAIN 924D19
 A CROSS RITA A2051 **Fert Idx**
 4.33
 30%

MS DMR GROWTH FUND 1302K2
 UB10517776 DMR THE CHAIRMAN 415A11
 MS DMR CHAIRMAN 1302D OAKS MS CSONKA 1302T

	CED	BW	WW	YW	MILK	SC	REA	IMF	HPreg	STAY	MCW
EPDs	6.9	-0.3	27	55	6	0.72	0.54	0.22	8.5	3	3.26
Acc	.31	.41	.39	.38	.23	.42	.43	.51	.19	.10	.20
%Rank	30%	40%	30%	25%	75%	30%	10%	30%	10%	20%	75%

CARCASS AND FERTILITY
 A Moderate made, big hip, big top and big bone No Doubt son out of MS DMR GROWTH FUND 1302K2 that we purchased in 2023 at the Fall CDP sale. This will be her first offsprings being offered and man are they good. He ranks in the top 30% in 11 EPD traits. Top 10% REA, 30% IMF. Scanned an ADJ 5 IMF. We cant say enough about this cross. Wait tell you see him in person

Disposition ★★★★★
Act BW 64
Adj SC 32.98

26 **CB GROWTH FUND 468M70** **GGP**
 UB10571869 • 468M70 • P • GEN: UB2 • 10/15/2024 • E
 CB CAPITAL GAIN 924D19 TJM THREE D 302A
 CB MS HOMBRE 924Z11 **Gen. Code**

CB GROWTH FUND 2051G11
 UB10418754 A CROSS RITA A2051 **Term Idx**
 3.29
 15%

CAVENDER BRANGUS
 MC BIG CITY 541G40
 MC MS RESOURCE 541A4 **Fert Idx**
 5.84
 3%

CB MS BIG CITY 468K66
 R10514662 CB MS THREE D 468C10
 TJM THREE D 302A
 MS SOUTHERN REAL DEAL 468W36

	CED	BW	WW	YW	MILK	SC	REA	IMF	HPreg	STAY	MCW
EPDs	3.8	-0.4	34	68	12	0.52	0.41	0.11	9.65	4.08	9.74
Acc	.33	.41	.39	.37	.25	.41	.42	.50	.21	.11	.20
%Rank	75%	35%	15%	10%	20%	45%	25%	45%	4%	2%	95%

BIG MILK, GROWTH AND INDEXES
 He is big topped, clean made and flawless in design. We chose to flush his dam as a virgin heifer. She was purchased in our Fall 2023 Sale by Ricky Lide. We have 3 maternal sisters to 468M70 retained in the herd by Deadwood and Longmire. He records big Milk, growth, REA and Indexes.

Disposition ★★★★★
Act BW 90
Adj SC 33.12

27 **BRIGGS NO DOUBT 1302M4** **GGP**
 R10573974 • 1302M4 • P • GEN: 1 • 9/20/2024 • E
 NEVER SURRENDER OF SALACOA 803D9 MC BOULDER 889Z14
 MS BRINKS LOMBARDI 803S25 **Gen. Code**

QVF NO DOUBT 30H15
 R10462487 T3 MS THREE D 30D **Term Idx**
 2.89
 25%

BRIGGS RANCHES
 TJM THREE D 302A
 MS SALACOA ATLANTA 30B5
 CB CAPITAL GAIN 924D19
 A CROSS RITA A2051 **Fert Idx**
 4.38
 25%

MS DMR GROWTH FUND 1302K2
 UB10517776 DMR THE CHAIRMAN 415A11
 MS DMR CHAIRMAN 1302D OAKS MS CSONKA 1302T

	CED	BW	WW	YW	MILK	SC	REA	IMF	HPreg	STAY	MCW
EPDs	6.7	-0.3	28	57	6	0.97	0.47	0.16	8.5	3	3.26
Acc	.31	.41	.39	.38	.23	.42	.43	.51	.19	.10	.20
%Rank	30%	40%	30%	20%	75%	15%	15%	35%	10%	20%	75%

CARCASS AND FERTILITY
 A Full sib to Lot 25 and you defiantly can not tell them apart. No Doubt son out of MS DMR GROWTH FUND 1302K2 that we purchased in 2023 at the Fall CDP sale. He ranks in the top 35% in 11 EPD traits.

Disposition ★★★★★
Act BW 78
Adj SC 34.98



Lot 26 Sire and Lot 25 & 27 Maternal Grandsire | CB Growth Fund 2051G11

28

CB ACE OF SPADES 415M46

R10572006 • 415M46 • P • GEN: 1 • 9/3/2024 • A

GGP

NEVER SURRENDER OF SALACOA 803D9
MC BOULDER 889Z14
MS BRINKS LOMBARDI 803S25

Gen. Code

ACE OF SPADES 406J

UB10476024

MS SALACOA CARCASS DSN 406E

TTR CARCASS DESIGN

TTR A5051 U0286 X6200

Term Idx

4.12

5%

CAVENDER BRANGUS

CRC ALL-AROUND 468E11

SUHN'S MAJESTIK BEACON 30C

MS CRC NUFF SAID 468A2

Fert Idx

3.98

40%

CB MS ALL AROUND 415K22

R10500186

CB MS CHISHOLM 415B10

SUHN'S CHISHOLM 331W45

CB MS BLANDA 415X7

	CED	BW	WW	YW	MILK	SC	REA	IMF	HPreg	STAY	MCW
EPDs	3.2	1.5	42	77	6	0.52	0.65	0.34	7.12	2.37	-3.99
Acc	.37	.47	.45	.37	.22	.41	.42	.50	.16	.09	.20
%Rank	80%	85%	5%	3%	75%	45%	5%	20%	15%	35%	35%

ELITE GROWTH, REA AND TERMINAL INDEX

He is big bodied and attractive. There is elite growth, REA and Terminal Index along with big IMF found in this Ace son. His dam is a granddaughter of the 415X7 donor we sold to Rueben Milan.

Disposition

★★★★

Act BW

80

Adj SC

36.4

**LOT 28 | CB Ace of Spades 415M46**

29

BRIGGS HANDSOME JACK 915M2

R10573886 • 915M2 • P • GEN: 6 • 10/12/2024 • A

GGP

DMR EMPIRE 795D12

TJM THREE D 302A

MS DMR JETHRO 795Y2

Gen. Code

BRIGGS HANDSOME JACK 392J

R10487374

MS SALACOA KHAN 392C15

KHAN OF SALACOA 535Y22

MS SALACOA LTD 392Y18

Term Idx

2.6

30%

BRIGGS RANCHES

SALACOA 99D HUASTECO 415G41

MS SALACOA STRATEGY 415E3

Fert Idx

4.32

30%

BRIGGS 915K2

R10522447

BRIGGS CAPITAL GAIN 915H

CB CAPITAL GAIN 924D19

MISS JLS MYTIME 915Z95

	CED	BW	WW	YW	MILK	SC	REA	IMF	HPreg	STAY	MCW
EPDs	6.6	-0.2	36	63	9	-0.01	0.48	-0.1	7.44	2.63	1.01
Acc	.34	.40	.43	.34	.22	.37	.38	.47	.15	.09	.20
%Rank	35%	40%	15%	15%	45%	95%	15%	95%	15%	30%	60%

BIG GROWTH AND REA

He is a son out Briggs Handsome Jack and out of BRIGGS 915K2 who has a 382 day calving interval on 2 head. He ranks in the top 35% in 9 EPD traits

Disposition

★★★★

Act BW

Adj SC

31.88

**Lot 29 Sire | Briggs Handsome Jack 392J**

30

BRIGGS BIGLAKE 23M60

R10573973 • 23M60 • S • GEN: 1 • 9/23/2024 • E

GGP

BWCC CROSS FIT 541B28

MC CROSSOVER 834Y

MC MS LUCIA 541U

Gen. Code

BWCC BIG LAKE 111F4

UB10399796

BWCC MS ROCK SOLID 111C6

S A V ROCK SOLID 2251

MC MS STRYKER 111U25

Term Idx

4.19

5%

BRIGGS RANCHES

NEVER SURRENDER OF SALACOA 803D9

MS BRINKS LOMBARDI 803S25

MC BOULDER 889Z14

Fert Idx

3.54

60%

BRIGGS NEVER SURRENDER 23K

R10501013

MS SALACOA NEW ERA 23Z51

NEW ERA OF BRINKS 541J37

SALACOA PINE LASS 23P2

	CED	BW	WW	YW	MILK	SC	REA	IMF	HPreg	STAY	MCW
EPDs	3.6	1	41	69	3	1.21	0.5	0.57	6.93	2.44	2.6
Acc	.34	.42	.40	.39	.27	.43	.43	.51	.23	.12	.21
%Rank	75%	75%	5%	10%	90%	10%	15%	4%	20%	35%	70%

GROWTH AND CARCASS

He is a Biglake son and out of BRIGGS NEVER SURRENDER 23K . BRIGGS GULF COAST 23F5 full sib. She her self has produced over \$20,000 in progeny in just a short amount of time. He boosts big growth top 5% WW, 10% YW along with Big Carcass 4% IM, 15% REA. Scanning an ADJ 5.64 IMF

Disposition

★★★★

Act BW

68

Adj SC

35.5

**LOT 30 | Briggs BigLake 23M60**



CB EXPRESS 9237M76

R10569427 • 9237M76 • P • GEN: 1 • 10/20/2024 • E



BWCC MONUMENT 10D7

MC BOULDER 889Z14

BWCC MS RESOURCE 10A10

Gen. Code

DMR EXPRESS 415J134

R10480419

MS DMR BEACON 415E133

SUHN'S MAJESTIK BEACON 30C

MS DMR CORONADO 415A7

Term Idx

2.5

30%

CAVENDER BRANGUS

CB TRADITION 63A

CB HOMBRE 541T3

CB CADENCE 63R

Fert Idx

5.2

10%

CB MS TRADITION 9237H2

UB10452545

CB MS THREE D 9237D

TJM THREE D 302A

EF FOREVER LADY 9237

	CED	BW	WW	YW	MILK	SC	REA	IMF	HPreg	STAY	MCW
EPDs	5.2	-0.7	27	46	5	1.64	0.39	0.21	11.48	3.57	-1.82
Acc	.33	.42	.40	.39	.23	.43	.44	.51	.19	.11	.21
%Rank	55%	30%	30%	40%	85%	2%	25%	30%	2%	10%	45%

CALVING EASE, BIG CARCASS AND INDEXES

This calving ease Express son is one of 6 full brothers in this sale. He is big topped and thick made. He boasts big WW, SC, carcass and Indexes.

Disposition

★★★★

Act BW

72

Adj SC

39.93



LOT 31 | CB Express 9237M76



BRIGGS NO DOUBT 1302M6

R10573977 • 1302M6 • P • GEN: 1 • 9/22/2024 • E



NEVER SURRENDER OF SALACOA 803D9

MC BOULDER 889Z14

MS BRINKS LOMBARDI 803S25

Gen. Code

QVF NO DOUBT 30H15

R10462487

T3 MS THREE D 30D

TJM THREE D 302A

MS SALACOA ATLANTA 30B5

Term Idx

2.8

25%

BRIGGS RANCHES

CB GROWTH FUND 2051G11

A CROSS RITA A2051

Fert Idx

4.48

25%

MS DMR GROWTH FUND 1302K2

UB10517776

MS DMR CHAIRMAN 1302D

DMR THE CHAIRMAN 415A11

OAKS MS CSONKA 1302T

	CED	BW	WW	YW	MILK	SC	REA	IMF	HPreg	STAY	MCW
EPDs	6.8	-0.3	29	60	6	1.24	0.52	0.05	8.5	3	3.26
Acc	.31	.41	.39	.38	.23	.42	.43	.51	.19	.10	.20
%Rank	30%	40%	25%	15%	75%	10%	15%	60%	10%	20%	75%

GROWTH AND CALVING EASE

Another full brother to lots 25 and 27. A No Doubt son that ranks in the top 30% in 10 EPD traits.

Disposition

★★★★

Act BW

70

Adj SC

37.06



LOT 32 | Briggs No Doubt 1302M6



CB EXPRESS 9237M65

R10569421 • 9237M65 • P • GEN: 1 • 10/13/2024 • E



BWCC MONUMENT 10D7

MC BOULDER 889Z14

BWCC MS RESOURCE 10A10

Gen. Code

DMR EXPRESS 415J134

R10480419

MS DMR BEACON 415E133

SUHN'S MAJESTIK BEACON 30C

MS DMR CORONADO 415A7

Term Idx

2.55

30%

CAVENDER BRANGUS

CB TRADITION 63A

CB HOMBRE 541T3

CB CADENCE 63R

Fert Idx

5.09

10%

CB MS TRADITION 9237H2

UB10452545

CB MS THREE D 9237D

TJM THREE D 302A

EF FOREVER LADY 9237

	CED	BW	WW	YW	MILK	SC	REA	IMF	HPreg	STAY	MCW
EPDs	5.3	-0.7	28	51	5	0.84	0.29	0.17	11.48	3.57	-1.82
Acc	.33	.42	.40	.39	.23	.43	.44	.51	.19	.11	.21
%Rank	55%	30%	30%	30%	85%	20%	40%	35%	2%	10%	45%

CALVING EASE, BIG GROWTH, FERTILITY

This calving ease prospect boasts the biggest growth of the brothers. He also records big SC, IMF and Indexes. We are pleased with his donor dam.

Disposition

★★★★

Act BW

68

Adj SC

33.64



CB EXPRESS 9237M74

R10569425 • 9237M74 • P • GEN: 1 • 10/22/2024 • E



BWCC MONUMENT 10D7

MC BOULDER 889Z14

BWCC MS RESOURCE 10A10

Gen. Code

DMR EXPRESS 415J134

R10480419

MS DMR BEACON 415E133

SUHN'S MAJESTIK BEACON 30C

MS DMR CORONADO 415A7

Term Idx

2.3

35%

CAVENDER BRANGUS

CB TRADITION 63A

CB HOMBRE 541T3

CB CADENCE 63R

Fert Idx

5.23

10%

CB MS TRADITION 9237H2

UB10452545

CB MS THREE D 9237D

TJM THREE D 302A

EF FOREVER LADY 9237

	CED	BW	WW	YW	MILK	SC	REA	IMF	HPreg	STAY	MCW
EPDs	5.1	-0.8	27	44	5	1.4	0.34	0.16	11.48	3.57	-1.82
Acc	.33	.42	.40	.39	.23	.43	.44	.51	.19	.11	.21
%Rank	55%	30%	30%	45%	85%	3%	30%	35%	2%	10%	45%

CALVING EASE, BIG CARCASS AND INDEXES

He is a calving ease full brother to 9231M55. M63, M65 and M76. They are all thick made wide bodied Express sons out of their Tradition donor dam. He records big WW, SC, carcass and Indexes.

Disposition

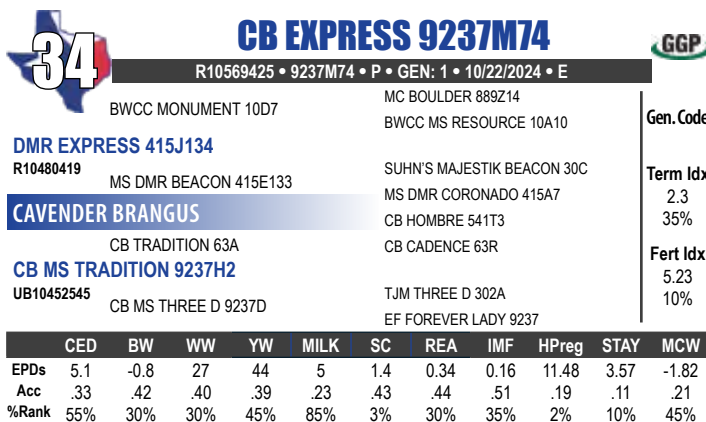
★★★★

Act BW

80

Adj SC

38.01



LOT 34 | CB Express 9237M74

35 BRIGGS MASTERPIECE 23M56

UB10573969 • 23M56 • P • GEN: UB2 • 9/18/2024 • E



SUHN'S TRAIL BOSS 30B3 SUHN'S AUGUSTUS 416Y14
SUHN'S MISS PATTON 30X5

Gen. Code

CB MASTERPIECE 2051F

UB10383790 A CROSS RITAA2051 CONNEALY CONSENSUS 7229
J & J OT26 RITA 48T

Term Idx
3.29
15%

BRIGGS RANCHES

NEVER SURRENDER OF SALACOA 803D9 MS BRINKS LOMBARDI 803S25
MC BOULDER 889Z14

Fert Idx
4.89
15%

BRIGGS NEVER SURRENDER 23K

R10501013 MS SALACOA NEW ERA 23Z51 NEW ERA OF BRINKS 541J37
SALACOA PINE LASS 23P2

	CED	BW	WW	YW	MILK	SC	REA	IMF	HPreg	STAY	MCW
EPDs	6.5	-1	35	60	6	0.69	0.5	0.24	6.78	3.34	5.73
Acc	.34	.42	.41	.39	.27	.43	.43	.51	.22	.11	.21
%Rank	35%	25%	15%	15%	75%	30%	15%	25%	20%	10%	85%

CALVING EASE, GROWTH AND CARCASS

A Masterpiece son and a Maternal sib to lot 30. A calving ease bull that ranks in the top 35% in 15 EPD traits.

Disposition
★★★★

Act BW
70
Adj SC
30.3



LOT 35 | Briggs Masterpiece 23M56

36 BRIGGS 541M9

R10573877 • 541M9 • P • GEN: 1 • 10/25/2024 • N



DMR CASH FLOW 535F30 SA V RESOURCE 1441
MS DMR CORONADO 535A8

Gen. Code

JM CASH FLOW 23J52

UB10478239 CLVR MISS IRIS 23Y1 SVF GARRETT 274 U229
SVF MS 23S101

Term Idx
2.94
20%

BRIGGS RANCHES

NEVER SURRENDER OF SALACOA 803D9 MS BRINKS LOMBARDI 803S25
MC BOULDER 889Z14

Fert Idx
3.5
60%

BRIGGS NEVER SURRENDER 541J4

R10505032 OAKS MS ATLANTA 541C53 ATLANTA OF SALACOA 488Z
OAKS MS CSONKA 541T7

	CED	BW	WW	YW	MILK	SC	REA	IMF	HPreg	STAY	MCW
EPDs	3.8	0.9	26	59	4	0.8	0.59	0.19	2.27	1.86	-3.86
Acc	.35	.40	.39	.32	.23	.33	.35	.43	.17	.10	.20
%Rank	75%	75%	35%	20%	90%	25%	10%	30%	65%	55%	35%

GROWTH AND CARCASS

He goes back to Cash Flow on the top and Never Surrender on the bottom side. Going back to the matriarch of Briggs herd OAKS MS ATLANTA 541C53. BRIGGS NEVER SURRENDER 541J4 has a 367 day calving interval in 2 head. He ranks in the top 35% in 7 EPD traits. With REA/CWT 1.19

Disposition
★★★★

Act BW
Adj SC
36.32



LOT 36 | Briggs 541M9



Lot 34 & 37 Sire | DMR Express 415J134

37 CB EXPRESS 9237M64

R10569419 • 9237M64 • P • GEN: 1 • 10/3/2024 • E



BWCC MONUMENT 10D7 MC BOULDER 889Z14
BWCC MS RESOURCE 10A10

Gen. Code

DMR EXPRESS 415J134

R10480419 MS DMR BEACON 415E133 SUHN'S MAJESTIK BEACON 30C
MS DMR CORONADO 415A7

Term Idx
2.06
45%

CAVENDER BRANGUS

CB TRADITION 63A CB HOMBRE 541T3
CB CADENCE 63R

Fert Idx
5.16
10%

CB MS TRADITION 9237H2

UB10452545 CB MS THREE D 9237D TJM THREE D 302A
EF FOREVER LADY 9237

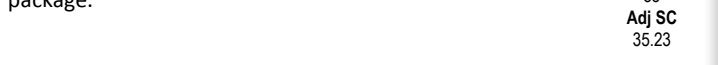
	CED	BW	WW	YW	MILK	SC	REA	IMF	HPreg	STAY	MCW
EPDs	5	-0.8	26	41	5	1.04	0.21	0.16	11.48	3.57	-1.82
Acc	.33	.42	.40	.39	.23	.43	.44	.51	.19	.11	.21
%Rank	60%	30%	35%	50%	85%	15%	50%	35%	2%	10%	45%

FULL SISTER SOLD FOR \$19,000

Express really worked on this Tradition donor. He boasts big WW, SC, IMF and Fertility. He is thick in a moderate package.

Disposition
★★★★

Act BW
85
Adj SC
35.23





BRIGGS EXPRESS 30M13

R10573975 • 30M13 • P • GEN: 2 • 9/16/2024 • E



MC BOULDER 889Z14
 BWCC MONUMENT 10D7
 BWCC MS RESOURCE 10A10
DMR EXPRESS 415J134
 R10480419 MS DMR BEACON 415E133
 SUHN'S MAJESTIK BEACON 30C
 MS DMR CORONADO 415A7
BRIGGS RANCHES
 DMR EMPIRE 795D12
 TJM THREE D 302A
 MS DMR JETHRO 795Y2
MS DMR EMPIRE 30K9
 R10505544 MS WW FOUNDATION 30E2
 SUHN'S FOUNDATION 331Z28
 MS WW NORTH STAR 30Z

Gen. Code
 Term Idx
 1.93
 50%
 Fert Idx
 4.24
 30%

	CED	BW	WW	YW	MILK	SC	REA	IMF	HPreg	STAY	MCW
EPDs	6	-0.6	23	39	4	1.14	0.34	0.09	9.07	2.64	0.05
Acc	.33	.42	.40	.35	.23	.35	.38	.45	.18	.10	.20
%Rank	40%	30%	45%	55%	90%	10%	30%	50%	10%	30%	55%

CALVING EASE AND FERTILITY

An Express son out of MS DMR EMPIRE 30K9 that we purchased in Spring of 2023 from Draggin M. She is one of Joe Jones favorite donor cows that maintains a 381 day calving interval all while being flushed. He ranks in the top 30% in BW and REA

Disposition
 ★★★★★
 Act BW
 65
 Adj SC
 34.72



LOT 38 | Briggs Express 30M13



BRIGGS NO DOUBT 1302M8

R10573982 • 1302M8 • P • GEN: 1 • 9/16/2024 • E



MC BOULDER 889Z14
 NEVER SURRENDER OF SALACOA 803D9
 MS BRINKS LOMBARDI 803S25
QVF NO DOUBT 30H15
 R10462487 T3 MS THREE D 30D
 TJM THREE D 302A
 MS SALACOA ATLANTA 30B5
BRIGGS RANCHES
 CB GROWTH FUND 2051G11
 A CROSS RITA A2051
MS DMR GROWTH FUND 1302K2
 UB10517776 MS DMR CHAIRMAN 1302D
 DMR THE CHAIRMAN 415A11
 OAKS MS CSONKA 1302T

Gen. Code
 Term Idx
 2.11
 40%
 Fert Idx
 4.8
 15%

	CED	BW	WW	YW	MILK	SC	REA	IMF	HPreg	STAY	MCW
EPDs	6.8	-0.4	26	50	6	0.95	0.53	-0.08	8.5	3	3.26
Acc	.31	.41	.39	.38	.23	.42	.43	.51	.19	.10	.20
%Rank	30%	35%	35%	30%	75%	15%	10%	95%	10%	20%	75%

CALVING EASE AND GROWTH

He is a full sib to lots 25,27 and 32. He ranks in the top 35% in 11 EPD traits. REA/CWT 1.21

Disposition
 ★★★★★
 Act BW
 70
 Adj SC
 34.82



LOT 39 | Briggs No Doubt 1302M8



BRIGGS EXPRESS 468M6

R10573880 • 468M6 • P • GEN: 2 • 9/17/2024 • A



MC BOULDER 889Z14
 BWCC MONUMENT 10D7
 BWCC MS RESOURCE 10A10
DMR EXPRESS 415J134
 R10480419 MS DMR BEACON 415E133
 SUHN'S MAJESTIK BEACON 30C
 MS DMR CORONADO 415A7
BRIGGS RANCHES
 T3 HOLLYWOOD 5F
 T3 MS YOSEMITE 5A
BRIGGS 468J6
 R10505049 SGR SF MISS BRICKHOUSE 468G4
 SF BRICKHOUSE 909D9
 SF MISS AFFIRMED 468B15

Gen. Code
 Term Idx
 2.92
 20%
 Fert Idx
 3.97
 40%

	CED	BW	WW	YW	MILK	SC	REA	IMF	HPreg	STAY	MCW
EPDs	6.1	-0.1	33	58	7	1.16	0.43	0.16	9.63	2.37	-4.01
Acc	.36	.41	.44	.35	.23	.38	.39	.47	.17	.09	.20
%Rank	40%	45%	20%	20%	65%	10%	20%	35%	5%	35%	35%

GROWTH AND FERTILITY

An Express son out of BRIGGS 468J6 who has a 373 day calving interval on 3 head. He ranks in the top 35% in 10 EPD traits. WW ratio 120

Disposition
 ★★★★★
 Act BW
 82
 Adj SC
 37.76



B5M GROWTH FUND 263M1

UB10567578 • 263M1 • P • GEN: UB2 • 10/12/2024 • A



CB CAPITAL GAIN 924D19
 TJM THREE D 302A
 CB MS HOMBRE 924Z11
CB GROWTH FUND 2051G11
 UB10418754 A CROSS RITA A2051
 CONNEALY CONSENSUS 7229
 J & J OT26 RITA 48T
B5M BRANGUS
 SPIDERMAN THREE D 283E2
 TJM THREE D 302A
 CB MS HOMBRE 283X2
MISS B5M SPIDER 263H
 R10452940 CLEM'S STAR 263D
 GC CLASSIC STAR 9U8A1
 CLEM'S ONSTAR 263A4

Gen. Code
 Term Idx
 2.39
 35%
 Fert Idx
 5.22
 10%

	CED	BW	WW	YW	MILK	SC	REA	IMF	HPreg	STAY	MCW
EPDs	3.8	0	19	54	6	0.7	0.15	0.1	8.47	3.72	9.48
Acc	.21	.33	.30	.23	.13	.27	.25	.32	.11	.05	.02
%Rank	75%	50%	60%	25%	75%	30%	60%	45%	10%	5%	95%

BIG YW AND FERTILITY

Growth fund and our 263 cows seems to work every time. We have sold several highlight heifers from this mating. 263M1 records big YW, SC and Indexes.

Disposition
 ★★★★★
 Act BW
 82
 Adj SC
 35.6



LOT 39 | Briggs No Doubt 1302M8

42 CB EXPRESS 9237M63

R10569418 • 9237M63 • P • GEN: 1 • 10/15/2024 • E

MC BOULDER 889Z14
BWCC MONUMENT 10D7
BWCC MS RESOURCE 10A10

DMR EXPRESS 415J134
R10480419 MS DMR BEACON 415E133

CAVENDER BRANGUS
CB TRADITION 63A

CB MS TRADITION 9237H2
UB10452545 CB MS THREE D 9237D

SUHN'S MAJESTIK BEACON 30C
MS DMR CORONADO 415A7
CB HOMBRE 541T3
CB CADENCE 63R
TJM THREE D 302A
EF FOREVER LADY 9237

Gen. Code
Term Idx 2.23
40%
Fert Idx 5.06
10%

	CED	BW	WW	YW	MILK	SC	REA	IMF	HPreg	STAY	MCW
EPDs	5.1	-0.8	27	44	5	0.59	0.23	0.16	11.48	3.57	-1.82
Acc	.33	.42	.40	.39	.23	.43	.51	.19	.11	.21	
%Rank	55%	30%	30%	45%	85%	40%	50%	35%	2%	10%	45%

CALVING EASE, BIG REA AND FERTILITY
He is a calving ease Express son with big REA and Fertility. He is a full brother to 9237M55 and their full sister sold to Agua Frita for \$19,000 last fall.

Disposition
★★★★
Act BW 76
Adj SC 31.72

43 CB POWER SOURCE 924M18

R10572239 • 924M18 • P • GEN: 1 • 10/15/2024 • N

MC POWER SOURCE 924C2
BWCC POWER SOURCE 192Z42
RBM MS 52 COOL HAND 924R

MC POWER SOURCE 889J17
R10484869 MC SHE'S SPECIAL 889Z10

CAVENDER BRANGUS
SF MACK 535E8

CB MS MACK 924J4
UB10473185 CB MS THREE D 924D22

MC SOMETHING SPECIAL 129W14
MC MS EXTRAVAGANT 889X4
MCKELLAR CONSENSUS 7229
SF MISS NEXT STEP 535X3
TJM THREE D 302A
CB MS HOMBRE 924Z11

Gen. Code
Term Idx 2.97
20%
Fert Idx 4.77
20%

	CED	BW	WW	YW	MILK	SC	REA	IMF	HPreg	STAY	MCW
EPDs	-2	2.9	32	58	9	0.57	0.58	0.28	7.19	3.35	3.93
Acc	.36	.47	.44	.35	.23	.40	.41	.50	.15	.10	.21
%Rank	>95%	>95%	20%	20%	45%	40%	10%	20%	15%	10%	75%

BIG GROWTH, CARCASS AND INDEXES
He is a powerful Power Source son who records big growth, carcass and Indexes. His dam is a Mack daughter.

Disposition
★★★★
Act BW 98
Adj SC 35.52

44 B/K EMPIRE 117M2

R10586454 • 117M2 • P • GEN: 1 • 10/10/2024 • A

TJM THREE D 302A
CB FINAL CUT 924X
OAKS MS PATTON 302X3

DMR EMPIRE 795D12
R10323531 MS DMR JETHRO 795Y2

KLEIN B/K BEEF
CB MASTERPIECE 2051F

B/K MS MASTERPIECE 117K
UB10516524 CB MS CAPITAL GAIN 117H20

MC JETHRO 00S3
MS BRINKS UPPERCUT 795R9
SUHN'S TRAIL BOSS 30B3
A CROSS RITA A2051
CB CAPITAL GAIN 924D19
MS LAWMAN LANDAU 117C

Gen. Code
Term Idx 2.58
30%
Fert Idx 4.35
30%

	CED	BW	WW	YW	MILK	SC	REA	IMF	HPreg	STAY	MCW
EPDs	5.8	0.3	33	49	0	1.07	0.41	0.25	11.05	3.32	4.92
Acc	.22	.28	.28	.25	.17	.27	.26	.31	.16	.08	.02
%Rank	45%	55%	20%	35%	>95%	10%	25%	25%	2%	10%	80%

BIG GROWTH, CARCASS AND INDEXES
He is a deep sided Empire son with a 70 lbs. birthweight. His dam is a Masterpiece daughter out of a full sister to the dam of Ledger. He boasts big growth, SC, carcass and Indexes.

Disposition
★★★★
Act BW 70
Adj SC 34.92

45 CB POWER SOURCE 103M19

R10572258 • 103M19 • P • GEN: 1 • 10/25/2024 • N

MC POWER SOURCE 924C2
BWCC POWER SOURCE 192Z42
RBM MS 52 COOL HAND 924R

MC POWER SOURCE 889J17
R10484869 MC SHE'S SPECIAL 889Z10

CAVENDER BRANGUS
CB WRANGLER 561F3

CB MS WRANGLER 103H13
UB10471011 CB MS PASSPORT 103D

MC SOMETHING SPECIAL 129W14
MC MS EXTRAVAGANT 889X4
SUHN'S MAJESTIK BEACON 30C
CB MS CHISHOLM 561B2
CB PASSPORT 803Y11
44 RUBY X103

Gen. Code
Term Idx 3.34
15%
Fert Idx 3.71
50%

	CED	BW	WW	YW	MILK	SC	REA	IMF	HPreg	STAY	MCW
EPDs	0.1	3.1	35	66	6	0.4	0.69	0.32	4.99	2.96	1.58
Acc	.35	.47	.44	.36	.23	.41	.42	.50	.16	.10	.20
%Rank	>95%	>95%	15%	10%	75%	55%	3%	20%	35%	20%	65%

BIG GROWTH AND CARCASS
He boasts big growth, carcass and Terminal Index. He is the natural calf of his donor dam and his maternal sister by Big Town sold for \$10,000 in the spring of 2024.

Disposition
★★★★
Act BW 95
Adj SC 32.13

46 CB EXPRESS 817M24

UB10572192 • 817M24 • P • GEN: UB2 • 10/4/2024 • A

BWCC MONUMENT 10D7
MC BOULDER 889Z14
BWCC MS RESOURCE 10A10

DMR EXPRESS 415J134
R10480419 MS DMR BEACON 415E133

CAVENDER BRANGUS
CB POWER PACK 75E7

CB MS POWER PACK 817H22
UB10470976 CRAZY K BLACKCAP 4036

SUHN'S MAJESTIK BEACON 30C
MS DMR CORONADO 415A7
TJM THREE D 302A
CB MS ONSTAR 75Y13
44 CKR KING JAMES X005
MINDEMANN BLACKCAP 817

Gen. Code
Term Idx 3.44
15%
Fert Idx 5.08
10%

	CED	BW	WW	YW	MILK	SC	REA	IMF	HPreg	STAY	MCW
EPDs	2.6	0.4	33	65	6	1.31	0.71	0.23	11.86	3.7	1.07
Acc	.37	.47	.45	.38	.25	.42	.43	.51	.18	.10	.20
%Rank	85%	60%	20%	10%	75%	5%	3%	25%	1%	5%	60%

BIG GROWTH, CARCASS AND INDEXES
Two maternal sibs averaged \$10,000 in past sales. His dam posts a 357 day calving interval on 4. He boasts big growth, SC, carcass and Indexes.

Disposition
★★★★
Act BW 85
Adj SC 37.27

47 ACC SENSATION 649M18

R10587010 • 649M18 • P • GEN: 1 • 10/22/2024 • N

2H PRETTY COOL 294C
2H BE COOL 313S4
2H MISS PRETTY SWEET 294U6

MP/RCC SENSATION 804J
UB10465094 DDD GIRL PLAYBOOK 804F85

CLEAVIE ALLEN
ACC BAILOUT 301U

ACC MISS BROOKS 649C
R10288236 ACC WHITNEY 649W

TEX PLAYBOOK 5437
DDD MS KESLEY 804W2
UPPERCUT OF BRINKS 14J8
SG MS TONTO 301N
BRINKS STINGER 535S49
MH MISS 649G

Gen. Code
Term Idx 1.14
75%
Fert Idx 3.73
50%

	CED	BW	WW	YW	MILK	SC	REA	IMF	HPreg	STAY	MCW
EPDs	4.4	0.3	13	32	10	0.88	0.18	-0.05	2.9	1.71	2.06
Acc	.14	.31	.26	.13	.06	.17	.16	.23	.02	.01	.01
%Rank	65%	55%	80%	70%	35%	20%	55%	90%	55%	60%	65%

BIG MILK
A Sensation son that ranks in the top 35% Milk. REA/CWT 1.14

Disposition
★★★★
Act BW 75
Adj SC 41.09

48 CB 889J17 PWR SOURCE 406M12

R10572198 • 406M12 • P • GEN: 4 • 10/1/2024 • N

MC POWER SOURCE 924C2 BWC POWER SOURCE 192Z42
RBM MS 52 COOL HAND 924R

MC POWER SOURCE 889J17
R10484869 MC SHE'S SPECIAL 889J20

CAVENDER BRANGUS
SF BRICKHOUSE 909D9

CB MS BRICKHOUSE 406H2
R10445093 CB MS ICON 406F

MC SOMETHING SPECIAL 129W14
MC MS EXTRAVAGANT 889X4
SUHN'S FOUNDATION 331Z28
SF MISS LTD 909Z4

PV ICON 655C2
CB MS PASSPORT 406B10

CED	BW	WW	YW	MILK	SC	REA	IMF	HPreg	STAY	MCW
EPDs 1.4	1.5	31	55	10	0.48	0.56	0.5	5.7	2.51	2.91
Acc .33	.42	.39	.32	.24	.33	.35	.43	.16	.10	.20
%Rank 95%	85%	20%	25%	35%	50%	10%	10%	25%	30%	70%

BIG MILK, CARCASS AND GROWTH
He is a stout son of Power Source. He boasts big growth, big carcass, scanning a 5.57 IMF, big Terminal Index and Milk. We have a maternal sister retained in the herd by Big Town and are using a maternal brother on our commercial cows.

Disposition ★★★★★
Act BW 100
Adj SC 36.15

49 LP THREE D 302M4

R10582484 • 302M4 • P • GEN: 6 • 8/28/2024 • E

CB FINAL CUT 924X MC REVELATION 129T
RBM MS GUNS 924T3

TJM THREE D 302A
R10244716 OAKS MS PATTON 302X3

LAS PALOMAS RANCH
NEW VISION OF SALACOA 209Y2

CLVR MS NEW VISION 302B10
R10276305 MS DMR LTD 302Y6

PATTON OF BRINKS 30T22
MISS BRINKS GERONIMO 302H6
LAMBERT OF BRINKS 317R3
MS BRINKS BRIGHT SIDE 209L11

LTD OF BRINKS 415T28
MS DMR NEXT STEP 302W5

CED	BW	WW	YW	MILK	SC	REA	IMF	HPreg	STAY	MCW
EPDs 4	0.2	28	47	2	0.4	0.25	-0.06	6.83	2.18	-6.44
Acc .35	.43	.41	.36	.30	.38	.39	.45	.24	.21	.24
%Rank 70%	55%	30%	35%	95%	55%	45%	90%	20%	40%	25%

BIG GROWTH AND FERTILITY
He is an own son of Three D with big growth and Fertility. His donor dam is a New Vision daughter.

Disposition ★★★★★
Act BW
Adj SC 34.45

50 LP DOMAIN 415M61

R10582478 • 415M61 • P • GEN: 6 • 8/21/2024 • E

DMR EMPIRE 795D12 TJM THREE D 302A
MS DMR JETHRO 795Y2

DMR DOMAIN 415G35
R10422132 MS DMR CORONADO 415A7

LAS PALOMAS RANCH
TJM THREE D 302A

MS DMR THREE D 415E16
R10351268 MS DMR CORONADO 415A7

TJM CORONADO 535X
MS BRINKS BRIGHT SIDE 415R23
CB FINAL CUT 924X
OAKS MS PATTON 302X3

TJM CORONADO 535X
MS BRINKS BRIGHT SIDE 415R23

CED	BW	WW	YW	MILK	SC	REA	IMF	HPreg	STAY	MCW
EPDs 7.6	-1.1	21	40	7	0.18	0.19	-0.04	9.52	3.38	-5.17
Acc .34	.43	.41	.36	.27	.37	.38	.45	.22	.13	.21
%Rank 20%	20%	50%	50%	65%	80%	55%	85%	5%	10%	30%

CALVING EASE, BIG FERTILITY
He is a calving ease prospect with big Fertility and average growth. He packs a lot of cow power behind him as he is double bred with the \$60,000 415A7 and the \$70,000 415R23 both top and bottom in his pedigree.

Disposition ★★★★★
Act BW
Adj SC 30.47

51 GCB DOMAIN 541M5

R10582077 • 541M5 • P • GEN: 4 • 9/2/2024 • E

DMR EMPIRE 795D12 TJM THREE D 302A
MS DMR JETHRO 795Y2

DMR DOMAIN 415G35
R10422132 MS DMR CORONADO 415A7

GOLD CREEK BRANGUS
MC NUFF SAID 889T50

CLVR MS NUFF SAID 541B2
R10276342 OAKS MS CSONKA 541T7

TJM CORONADO 535X
MS BRINKS BRIGHT SIDE 415R23
MC JOHN WAYNE 165N3
MC MS EXTRAVAGANT 889P4

CSONKA OF BRINKS 30R4
MS BRINKS GD FORTUNE 541P103

CED	BW	WW	YW	MILK	SC	REA	IMF	HPreg	STAY	MCW
EPDs 5.8	0.1	21	47	8	0.3	0.44	-0.03	8.7	2.75	-5.43
Acc .34	.42	.40	.37	.26	.40	.41	.48	.21	.13	.21
%Rank 45%	50%	50%	35%	55%	70%	20%	85%	10%	25%	30%

BIG MILK AND FERTILITY
This Domain son posts big Milk, REA and Fertility EPDs. His donor dam is an own daughter of the \$70,000 donor 541T7.

Disposition ★★★★★
Act BW 88
Adj SC 34.16

52 MR STALWART 512M6

R10589793 • 512M6 • P • GEN: 2 • 10/20/2024 • N

BWCC BIG LAKE 111F4 BWC CROSS FIT 541B28
BWC MS ROCK SOLID 111C6

DMR BIG LAKE 415J82
R10489632 MS DMR THREE D 415E18

STALWART RANCHES
CRC-IFCC MAGNUM 331T

MISS STALWART 512A
R10263857 MISS STALWART 512S

TJM THREE D 302A
MS DMR CORONADO 415A7
BLACKHAWK OF BRINKS 607M12
SUHN'S MISS CADENCE 331L2

VR COWBOY 624F6
MISS STALWART 512J

CED	BW	WW	YW	MILK	SC	REA	IMF	HPreg	STAY	MCW
EPDs 4.8	1	21	34	10	1.01	-0.02	0.08	5.64	2.19	-3.24
Acc .33	.39	.38	.30	.25	.32	.33	.41	.15	.10	.20
%Rank 60%	75%	50%	65%	35%	15%	85%	50%	30%	40%	40%

MILK AND FERTILITY
A Biglake grandson and out of MISS STALWART 512A who has a 395 day calving interval on 10 day. He ranks in the top 35% in Milk

Disposition ★★★★★
Act BW
Adj SC 33.51

53 BRIGGS 23M65

UB10573947 • 23M65 • P • GEN: UB2 • 9/24/2024 • N

CB CAPITAL GAIN 924D19 TJM THREE D 302A
CB MS HOMBRE 924Z11

CB CAPITAL GAIN 2051K9
UB10503832 A CROSS RITA A2051

BRIGGS RANCHES
SALACOA ATLANTA 334E5

BRIGGS 23H9
R10452469 BRIGGS MS BIG TOWN 23F3

CONNEALY CONSENSUS 7229
J & J OT26 RITA 48T
ATLANTA OF SALACOA 488Z
MS SALACOA STONEWALL 334C3

BWCC BIG TOWN 192B16
MS SVF ELIXIR 23X66

CED	BW	WW	YW	MILK	SC	REA	IMF	HPreg	STAY	MCW
EPDs 7.9	-2.1	28	51	11	0.36	0.37	0.35	10.06	3.74	0.87
Acc .32	.40	.39	.31	.25	.32	.34	.42	.16	.10	.20
%Rank 20%	10%	30%	30%	25%	60%	30%	15%	3%	4%	60%

CALVING EASE, GROWTH AND CARCASS
Going back to Capital Gains on the top and Atlanta and Bigtown on the bottom talk about calving ease deluxe. He ranks in the top 30% in 15 EPD traits. Top 10% BW. REA/CWT 1.18

Disposition ★★★★★
Act BW
Adj SC 33.25



BRIGGS 793M

R10573878 • 793M • P • GEN: 1 • 10/10/2024 • N



DMR CASH FLOW 535F30 S A V RESOURCE 1441
MS DMR CORONADO 535A8

Gen. Code

JM CASH FLOW 23J52

UB10478239 CLVR MISS IRIS 23Y1

SVF GARRETT 274 U229
SVF MS 23S101

Term Idx
2.28

BRIGGS RANCHES

PRESIDENTE BRIGGS 23E4

SKYHAWKS PRESIDENTE
MS SVF WARRIOR 23W

Fert Idx
4.13

BRIGGS 793G2

R10421784 MS SVF WARRIOR 793Y3

TCB CATAWBA WARRIOR R532
SVF 44S6 793 W284

Fert Idx
35%

	CED	BW	WW	YW	MILK	SC	REA	IMF	HPreg	STAY	MCW
EPDs	5.3	-0.3	22	51	10	0.72	0.3	0.05	3.07	2.22	-6.08
Acc	.36	.40	.44	.34	.24	.37	.39	.47	.16	.10	.20
%Rank	55%	40%	50%	30%	35%	30%	40%	60%	55%	40%	25%

MILK

With Cash Flow on the top and Presidente on the bottom this bull has the looks!! Ranking top 30% YW, 35% Milk. WW ratio 113. REA/CWT 1.16

Disposition
★★★★

Act BW

Adj SC
34.9



ACC SENSATION 649M15

R10587007 • 649M15 • P • GEN: 1 • 10/6/2024 • N



2H PRETTY COOL 294C 2H BE COOL 31354
2H MISS PRETTY SWEET 294U6

Gen. Code

MP/RCC SENSATION 804J

UB10465094 DDD GIRL PLAYBOOK 804F85

TEX PLAYBOOK 5437
DDD MS KESLEY 804W2

Term Idx
1.38

CLEAVIE ALLEN

OCR PROFIT 18D

MC PROFIT 924B16
SJ MS SHOOTER 18A7

Fert Idx
3.99

ACC HERSHEY 649H3

R10433940 ACC CLEAVIE 649Y

SKYHAWKS PRESIDENTE
ACC SADIE 649S2

Fert Idx
40%

	CED	BW	WW	YW	MILK	SC	REA	IMF	HPreg	STAY	MCW
EPDs	4	0.8	19	31	10	0.1	0.21	0.06	4.45	2.13	-3.26
Acc	.14	.31	.25	.13	.06	.17	.16	.23	.02	.02	.01
%Rank	70%	70%	60%	75%	35%	85%	50%	55%	40%	45%	40%

MILK

A Sensation son that ranks in the top 35% Milk. REA/CWT 1.14

Disposition
★★★★

Act BW

Adj SC
36.24



CB NEW STANDARD 17M8

R10569417 • 17M8 • P • GEN: 1 • 10/8/2024 • E



CB ORACLE 468F15 CB TRADITION 63A
CB MS LTD 468Y12

Gen. Code

CB NEW STANDARD 817J3

UB10481496 CB MS THREE D-C8 817F4

CB THREE D 468C8
CRAZY K BLACKCAP 4036

Term Idx
3.48

CAVENDER BRANGUS

BWCC MCQUEEN 192E24

BWCC CROSS FIT 541B28
BWCC MS CHILL FACTOR 192A60

Fert Idx
4.47

ACE MS MCQUEEN 17K2

R10524154 MS SALACOA N SURRENDER 17H3

NEVER SURRENDER OF SALACOA 803D9
MB MS NEW DIRECTION 17R5

Fert Idx
25%

	CED	BW	WW	YW	MILK	SC	REA	IMF	HPreg	STAY	MCW
EPDs	6.1	-0.4	39	73	5	0.47	0.39	0.18	7.65	3.47	3.05
Acc	.32	.41	.39	.38	.22	.43	.43	.50	.17	.09	.20
%Rank	40%	35%	10%	5%	85%	50%	25%	35%	15%	10%	70%

CALVING EASE, BIG GROWTH AND CARCASS

This calving ease prospect is sired by New Standard. His donor dam is out of a Never Surrender daughter we really like. He records elite YW, big WW, carcass and Indexes.

Disposition
★★★★

Act BW

Adj SC
33.84



MR STALWART 698M3

R10578499 • 698M3 • P • GEN: 5 • 10/15/2024 • N



MR STALWART 47B3 SF AFFIRMED 541Z21
MISS STALWART 47R

Gen. Code

ACC HOWDY 358H

R10460894 ACC MISS STIMULUS 358

ACC STIMULUS 873U2
ACC MISS CHAMP 63T

Term Idx
1.07

STALWART RANCHES

MR DANN 7A

MR CCC MOSSBERG 99X23
DANNS MS 7W9

Fert Idx
2.98

MISS STALWART 698F2

R10414843 MS STALWART 698A

CENTER MR FRED 196/S24
HCC MS MAX 698M11

Fert Idx
80%

	CED	BW	WW	YW	MILK	SC	REA	IMF	HPreg	STAY	MCW
EPDs	5.7	0.9	15	29	11	0.2	-0.01	0.02	0.53	0.89	-7.42
Acc	.35	.38	.43	.27	.22	.28	.29	.38	.11	.07	.20
%Rank	45%	75%	70%	75%	25%	80%	85%	65%	80%	85%	25%

MILK

A super powerful ACC Howdy son that bring the whole package to the pen. He ranks in the top 25% Milk

Disposition
★★★★

Act BW

Adj SC
32.11



CB NEW STANDARD 17M7

R10569414 • 17M7 • P • GEN: 1 • 10/11/2024 • E



CB ORACLE 468F15 CB TRADITION 63A
CB MS LTD 468Y12

Gen. Code

CB NEW STANDARD 817J3

UB10481496 CB MS THREE D-C8 817F4

CB THREE D 468C8
CRAZY K BLACKCAP 4036

Term Idx
3.24

CAVENDER BRANGUS

BWCC MCQUEEN 192E24

BWCC CROSS FIT 541B28
BWCC MS CHILL FACTOR 192A60

Fert Idx
4.83

ACE MS MCQUEEN 17K2

R10524154 MS SALACOA N SURRENDER 17H3

NEVER SURRENDER OF SALACOA 803D9
MB MS NEW DIRECTION 17R5

Fert Idx
15%

	CED	BW	WW	YW	MILK	SC	REA	IMF	HPreg	STAY	MCW
EPDs	5.9	-0.4	39	71	5	0.36	0.51	0.05	7.65	3.47	3.05
Acc	.32	.41	.39	.38	.22	.43	.43	.50	.17	.09	.20
%Rank	45%	35%	10%	10%	85%	60%	15%	60%	15%	10%	70%

BIG GROWTH AND INDEXES

By New Standard, his donor dam is a McQueen daughter who was our choice at the QVF Elite Heifer sale in 2023. He boasts big growth, REA and Indexes.

Disposition
★★★★

Act BW

Adj SC
32.96



PR PARAMOUNT 129M27

R10576368 • 129M27 • P • GEN: 1 • 10/11/2024 • E



CB CAPITAL GAIN 924D19 TJM THREE D 302A
CB MS HOMBRE 924Z11

Gen. Code

CB PARAMOUNT 7139H2

UB10445139 CB MS TRADITION 7139D2

CB TRADITION 63A
EF EVER EXTENSE 7139

Term Idx
3.73

PENNRIDGE RANCH

T3 PRIMETIME 803D4

HOLLYWOOD OF SALACOA 23A53
MS BRINKS LOMBARDI 803S25

Fert Idx
4.62

PR MS PRIMETIME 129H10

R10442813 PR MS STONEWALL 129F18

STONEWALL OF RRR 222W6
MB MS INFOCUS 129X2

Fert Idx
20%

	CED	BW	WW	YW	MILK	SC	REA	IMF	HPreg	STAY	MCW
EPDs	4.4	1	48	80	10	-0.02	0.48	0.14	10.15	3.59	4.61
Acc	.34	.42	.39	.37	.24	.42	.42	.49	.19	.10	.21
%Rank	65%	75%	2%	2%	35%	95%	15%	40%	3%	10%	80%

ELITE GROWTH, BIG MILK, MATERNALLY SOUND

He stacks elite WW and YW EPDs. His donor dam is sired by a maternal brother to Never Surrender and traces back to the great 129X2 donor. He also records big Milk, carcass and Indexes.

Disposition
★★★★

Act BW

Adj SC
31.15



CB GUNSMOKE 131M

UB10572241 • 131M • P • GEN: UB2 • 10/14/2024 • N



DMR CASH FLOW 535F30

S A V RESOURCE 1441
MS DMR CORONADO 535A8

Gen. Code

DMR GUNSMOKE 99H31

UB10462728 MS DMR EMPIRE 99F23

DMR EMPIRE 795D12
MS C STAR PATTON 99X31

Term Idx
2.01
45%

CAVENDER BRANGUS

CB TRADITION 63A

CB HOMBRE 541T3
CB CADENCE 63R

Fert Idx
5.64
4%

CB MS TRADITION 131J

UB10489160 CB MS CAPITAL GAIN 131G
CB MS CAPITAL GAIN 131G

CB CAPITAL GAIN 924D19
SQ 131W

	CED	BW	WW	YW	MILK	SC	REA	IMF	HPreg	STAY	MCW
EPDs	-0.1	2.6	28	52	4	0.68	0.26	0.06	9.94	3.88	-1.03
Acc	.37	.48	.45	.37	.24	.42	.42	.50	.17	.10	.21
%Rank	>95%	>95%	30%	30%	90%	30%	45%	55%	4%	3%	50%

BIG GROWTH AND ELITE FERTILITY

He is a Gunsmoke son. His Tradition dam has done us a nice job and just weaned a Cavalry heifer calf. He posts big growth, SC and Fertility Index.

Disposition

★★★★

Act BW

98

Adj SC

34.48



CB CASH FLOW 99M5

UB10575038 • 99M5 • P • GEN: UB2 • 10/28/2024 • A



S A V RESOURCE 1441

RITO 707 OF IDEAL 3407 7075
S A V BLACKCAP MAY 4136

Gen. Code

DMR CASH FLOW 535F30

UB10386538 MS DMR CORONADO 535A8

TJM CORONADO 535X
SVF MS 535M31

Term Idx
3.01
20%

CAVENDER BRANGUS

DMR DOMAIN 415G35

DMR EMPIRE 795D12
MS DMR CORONADO 415A7

Fert Idx
5.47
5%

LP MS DOMAIN 99K26

R10528907 CLVR MS TRIBUTE 99D6

DMR TRIBUTE 415Z46
101 MS PATTON 99X9

	CED	BW	WW	YW	MILK	SC	REA	IMF	HPreg	STAY	MCW
EPDs	4.8	0.1	35	61	1	0.25	0.42	0.19	7.04	3.48	-5.4
Acc	.33	.42	.40	.35	.26	.35	.37	.44	.22	.12	.20
%Rank	60%	50%	15%	15%	>95%	75%	20%	30%	20%	10%	30%

BIG GROWTH, CARCASS AND ELITE FERTILITY.

He is a Cash Flow son with big growth, carcass, Terminal Index and elite Fertility.

Disposition

★★★★

Act BW

78

Adj SC

36.16



CB EXPRESS 9237M55

R10571835 • 9237M55 • P • GEN: 1 • 8/23/2024 • E



BWCC MONUMENT 10D7

MC BOULDER 889Z14
BWCC MS RESOURCE 10A10

Gen. Code

DMR EXPRESS 415J134

R10480419 MS DMR BEACON 415E133

SUHN'S MAJESTIK BEACON 30C
MS DMR CORONADO 415A7

Term Idx
2.04
45%

CAVENDER BRANGUS

CB TRADITION 63A

CB HOMBRE 541T3
CB CADENCE 63R

Fert Idx
5.06
10%

CB MS TRADITION 9237H2

UB10452545 CB MS THREE D 9237D

TJM THREE D 302A
EF FOREVER LADY 9237

	CED	BW	WW	YW	MILK	SC	REA	IMF	HPreg	STAY	MCW
EPDs	5	-0.8	27	43	5	1.1	0.33	0.07	11.48	3.57	-1.82
Acc	.33	.42	.40	.39	.23	.43	.44	.51	.19	.11	.21
%Rank	60%	30%	30%	30%	45%	85%	10%	35%	55%	2%	10%

BIG WW, REA AND FERTILITY

He is a maternal brother to 9237M45 who also sells. He is sired by Express and boasts big WW, SC, REA and Fertility. Their dam is a Tradition daughter.

Disposition

★★★★

Act BW

86

Adj SC

35.55



CB EXPRESS 924M17

R10572020 • 924M17 • P • GEN: 1 • 9/6/2024 • A



BWCC MONUMENT 10D7

MC BOULDER 889Z14
BWCC MS RESOURCE 10A10

Gen. Code

DMR EXPRESS 415J134

R10480419 MS DMR BEACON 415E133

SUHN'S MAJESTIK BEACON 30C
MS DMR CORONADO 415A7

Term Idx
3.31
15%

CAVENDER BRANGUS

CB GROWTH FUND 2051G11

A CROSS RITA A2051
BWCC MONUMENT 10D7

Fert Idx
3.48
60%

CB GROWTH FUND 924K8

UB10514694 VF MS MONUMENT 924G2

BWCC MONUMENT 10D7
MS B2K-TBF JETHRO 924Z12

	CED	BW	WW	YW	MILK	SC	REA	IMF	HPreg	STAY	MCW
EPDs	6.8	-1.5	28	50	8	0.66	0.49	0.44	10.49	2.92	1.69
Acc	.37	.47	.45	.37	.22	.41	.42	.50	.18	.09	.20
%Rank	30%	15%	30%	30%	55%	35%	15%	10%	3%	20%	65%

CALVING EASE, BIG GROWTH AND CARCASS

He is another calving ease Express son. He is the first calf of his Growth Fund dam. He records big growth, SC, carcass and Terminal Index.

Disposition

★★★★

Act BW

62

Adj SC

35.02



ETX COWBOY 7139M3

UB10581984 • 7139M3 • P • GEN: UB2 • 9/18/2024 • N



CB COWBOY CUT 627E5

PV ICON 655C2
CB MS NEW CONCEPT 627A2

Gen. Code

CB COWBOY 2H2

R10452433 CB MS THREE D 2D7

TJM THREE D 302A
CB MS BT 2U

Term Idx
2.69
25%

EAST TEXAS CATTLE CO

CB TRADITION 63A

CB HOMBRE 541T3
CB CADENCE 63R

Fert Idx
5.16
10%

CB MS TRADITION 7139E17

UB10368407 EF EVER ENTENSE 7139

E&B 1680 PRECISION 1023
SOUTHERN EVER ENTENSE 091

	CED	BW	WW	YW	MILK	SC	REA	IMF	HPreg	STAY	MCW
EPDs	5.6	-0.8	24	47	6	0.4	0.37	0.27	8.42	3.66	1.95
Acc	.33	.47	.44	.35	.24	.39	.40	.48	.17	.11	.21
%Rank	50%	30%	40%	35%	75%	55%	30%	25%	10%	5%	65%

BIG YW, CARCASS AND INDEXES

This calving ease son of Cowboy records big YW, carcass and Indexes. We purchased his dam in the fall of 2023 Cavender sale. She does a great job.

Disposition

★★★★

Act BW

75

Adj SC

29.62



B/K EXPRESS 468M3

R10586453 • 468M3 • P • GEN: 2 • 10/8/2024 • N



BWCC MONUMENT 10D7

MC BOULDER 889Z14
BWCC MS RESOURCE 10A10

Gen. Code

DMR EXPRESS 415J134

R10480419 MS DMR BEACON 415E133

SUHN'S MAJESTIK BEACON 30C
MS DMR CORONADO 415A7

Term Idx
2.08
45%

KLEIN B/K BEEF

MC BIG CITY 541G40

MC MS RESOURCE 541A4
TJM THREE D 302A

Fert Idx
4.9
15%

CB MS BIG CITY 468K88

R10514684 CB MS THREE D 468C10

MS SOUTHERN REAL DEAL 468W36

	CED	BW	WW	YW	MILK	SC	REA	IMF	HPreg	STAY	MCW
EPDs	6.8	-1.1	26	46	8	0.92	0.27	0	12.54	3.28	2.04
Acc	.21	.28	.27	.25	.09	.26	.27	.33	.11	.05	.01
%Rank	30%	20%	35%	40%	55%	15%	45%	75%	1%	10%	65%

CALVING EASE, BIG WW AND FERTILITY

This Express son is a calving ease prospect. He also boasts big WW, SC and Fertility. His dam was our selection in the Spring 2024 Female Sale. She is a daughter of the 468C10 donor.

Disposition

★★★★

Act BW

62

Adj SC

33.34

66 CB ACE OF SPADES 4232M11

UB10569404 • 4232M11 • P • GEN: UB2 • 9/20/2024 • E

NEVER SURRENDER OF SALACOA 803D9
MC BOULDER 889Z14
MS BRINKS LOMBARDI 803S25

ACE OF SPADES 406J
UB10476024 MS SALACOA CARCASS DSN 406E

CAVENDER BRANGUS
CB BLOUNT 607G7

CB MS BLOUNT 4232J
UB10489092 CB MS THREE D 4232E

TTR CARCASS DESIGN
TTR A5051 U0286 X6200
SUHN'S TRAIL BOSS 30B3
CB MS FINAL CUT 607C15

TJM THREE D 302A
BJ 5050 NEW DESIGN 4232

CED	BW	WW	YW	MILK	SC	REA	IMF	HPreg	STAY	MCW	
EPDs	4.7	0.4	48	78	3	0.68	0.35	0.29	6.76	3.42	3.62
Acc	.34	.42	.40	.38	.23	.43	.43	.51	.16	.09	.20
%Rank	60%	60%	2%	3%	90%	30%	30%	20%	20%	10%	75%

Disposition
★★★★
Act BW 85
Adj SC 35

67 GCB JUSTIFIED 2M7

R10582055 • 2M7 • P • GEN: 6 • 8/31/2024 • E

BWCC CROSS FIT 541B28
MC CROSSOVER 834Y
MC MS LUCIA 541U

DMR JUSTIFIED 30G82
R10422088 MS DMR CHAIRMAN 30C2

GOLD CREEK BRANGUS
CB PASSPORT 803Y11

CB MS PASSPORT 2B
R10275279 CB MS BT 2U

DMR THE CHAIRMAN 415A11
SUHN'S MISS PATTON 30X6
CB HOMBRE 541T3
MS BRINKS LAMBERT 803T6

BURTIN'S TRANSFORMER 803G3
CB MS LUCKY 2L

CED	BW	WW	YW	MILK	SC	REA	IMF	HPreg	STAY	MCW	
EPDs	6.4	-0.1	16	23	-1	0.26	-0.08	0.21	0.86	1.09	-2.31
Acc	.34	.43	.41	.38	.28	.41	.42	.49	.22	.13	.21
%Rank	35%	45%	70%	90%	>95%	70%	95%	30%	80%	80%	45%

Disposition
★★★★
Act BW 82
Adj SC 31.58

68 PR MONUMENT 331M4

R10576342 • 331M4 • P • GEN: 1 • 10/3/2024 • A

MC BOULDER 889Z14
MC SOMETHING SPECIAL 129W14
MC MS EXTRAVAGANT 889X4

BWCC MONUMENT 10D7
UB10336225 BWCC MS RESOURCE 10A10

PENNRIDGE RANCH
DMR KINGDOM 535G45

PR MS KINGDOM 331K
R10516948 PR MS BROADWAY 331H

S A V RESOURCE 1441
BWCC MS NUFF SAID 10X
DMR EMPIRE 795D12
MS DMR CORONADO 535A8

T3 BROADWAY 30E
SUHN'S MS CONFIDENCE 331D31

CED	BW	WW	YW	MILK	SC	REA	IMF	HPreg	STAY	MCW	
EPDs	5.5	-0.4	28	43	5	0.89	0.34	0.31	8.49	2.35	-4.95
Acc	.34	.42	.40	.34	.27	.35	.37	.44	.22	.12	.20
%Rank	50%	35%	30%	45%	85%	20%	30%	20%	10%	35%	30%

Disposition
★★★★
Act BW 57
Adj SC 31.63

69 ETX COWBOY 406M2

R10581971 • 406M2 • P • GEN: 2 • 10/10/2024 • A

CB COWBOY CUT 627E5
PV ICON 655C2
CB MS NEW CONCEPT 627A2

CB COWBOY 2H2
R10452433 CB MS THREE D 2D7

EAST TEXAS CATTLE CO
CB BRICKHOUSE 60G8

MS ETX BRICKHOUSE 406J2
R10507380 CB MS BEACON 406E12

TJM THREE D 302A
CB MS BT 2U
SF BRICKHOUSE 909D9
CB MS PASSPORT 60C2

SUHN'S MAJESTIK BEACON 30C
CB MS LTD 406X

CED	BW	WW	YW	MILK	SC	REA	IMF	HPreg	STAY	MCW	
EPDs	4.7	0	29	59	3	1.48	0.25	0	6.21	2.65	3.78
Acc	.31	.46	.42	.33	.21	.38	.38	.47	.14	.09	.20
%Rank	60%	50%	25%	20%	90%	3%	45%	75%	25%	25%	75%

Disposition
★★★★
Act BW 75
Adj SC 35.32

70 CB EXPRESS 7139M18

R10572218 • 7139M18 • P • GEN: 1 • 9/13/2024 • A

BWCC MONUMENT 10D7
MC BOULDER 889Z14
BWCC MS RESOURCE 10A10

DMR EXPRESS 415J134
R10480419 MS DMR BEACON 415E133

CAVENDER BRANGUS
SUHN'S TRAIL BOSS 30B3

CB MS TRAIL BOSS 7139J3
UB10477594 CB MS TRADITION 7139D5

SUHN'S MAJESTIK BEACON 30C
MS DMR CORONADO 415A7
SUHN'S AUGUSTUS 416Y14
SUHN'S MISS PATTON 30X5

CB TRADITION 63A
EF EVER ENTENSE 7139

CED	BW	WW	YW	MILK	SC	REA	IMF	HPreg	STAY	MCW	
EPDs	5.5	-0.5	14	29	4	1.1	0.1	0.23	10.08	3.05	-1.76
Acc	.37	.47	.45	.38	.24	.42	.43	.50	.18	.10	.20
%Rank	50%	35%	75%	75%	90%	10%	70%	25%	3%	15%	45%

Disposition
★★★★
Act BW 79
Adj SC 35.71

71 CB GUNSMOKE 1435M4

UB10572245 • 1435M4 • P • GEN: UB2 • 10/11/2024 • N

DMR CASH FLOW 535F30
S A V RESOURCE 1441
MS DMR CORONADO 535A8

DMR GUNSMOKE 99H31
UB10462728 MS DMR EMPIRE 99F23

CAVENDER BRANGUS
CB WRANGLER 561F3

CB MS WRANGLER 1435J2
UB10489179 CB MS HOMBRE 1435A

DMR EMPIRE 795D12
MS C STAR PATTON 99X31
SUHN'S MAJESTIK BEACON 30C
CB MS CHISHOLM 561B2

CB HOMBRE 541T3
G A R 1407 NEW DESIGN 1435

CED	BW	WW	YW	MILK	SC	REA	IMF	HPreg	STAY	MCW	
EPDs	1.3	2.4	37	64	5	1.2	0.4	0.07	7.13	2.75	-1.08
Acc	.37	.48	.45	.37	.24	.41	.42	.50	.17	.10	.20
%Rank	95%	95%	10%	15%	85%	10%	25%	55%	15%	25%	50%

Disposition
★★★★
Act BW 88
Adj SC 36.36

ELITE GROWTH, BIG CARCASS AND INDEXES
He records elite growth, big SC, carcass and Indexes, he is the complete package. Two full brothers sold last fall a s yearlings for \$9,500 and \$9,000 respectively and a full sister sold for \$12,500.

CALVING EASE, BIG IMF
He is a calving ease Justified son with big IMF. His dam is a Passport daughter we purchased in the 2015 Houston sale from Cavender's.

CALVING EASE, BIG WW AND CARCASS
He is a calving ease Monument son. His dam is a Kingdom daughter of the powerful 331 tribe. He records big weaning, SC, carcass and Terminal Index.

BIG GROWTH AND INDEXES
He is a Cowboy son. Cowboy was our \$15,000 selection in the 2021 Cavender's Fall Sale. 406M2 records big growth, SC and Indexes. His dam is by our main herd sire 60G8.

CALVING EASE, BIG IMF AND FERTILITY
He is a calving ease Express son with big IMF and Fertility. He is a natural calf of his dam who we elected to flush. She is a Trail Boss daughter.

BIG GROWTH, REA AND INDEXES
Gunsmoke did a nice job here. 1435M4 records big growth, SC, REA and Indexes. His Wrangler dam calved first at 23 months of age, a Growth Fund heifer we retained, and he is her second calf.



CB BIG CITY 7139M21

UB10572264 • 7139M21 • P • GEN: UB2 • 10/18/2024 • N



BWCC BIG TOWN 192B16

MC NUFF SAID 889T50
BWCC MS REVELATION 192W8

Gen. Code

MC BIG CITY 541G40

UB10449614

MC MS RESOURCE 541A4

S A V RESOURCE 1441
MC MS ROCK STAR 541X10

Term Idx
3.1
20%

CAVENDER BRANGUS

SF BRICKHOUSE 909D9

SUHN'S FOUNDATION 331Z28
SF MISS LTD 909Z4

Fert Idx
5.53
4%

CB MS BRICKHOUSE 7139J8

UB10470001

CB MS CAPITAL GAIN 7139G9

CB CAPITAL GAIN 924D19
EF EVER ENTENSE 7139

	CED	BW	WW	YW	MILK	SC	REA	IMF	HPreg	STAY	MCW
EPDs	2.7	0.8	35	47	11	0.9	0.38	0.45	11.65	3.87	3.55
Acc	.37	.48	.46	.38	.27	.43	.43	.51	.21	.11	.20
%Rank	85%	70%	15%	35%	25%	20%	25%	10%	1%	3%	75%

BIG MILK, GROWTH, CARCASS

He is a maternal brother to the \$24,000 Dually purchased by Tanner Farms in our sale last fall. He records big growth, Milk, carcass and Indexes.

Disposition

★★★★

Act BW

82

Adj SC

36.15



GCB NVR SRRNDR 2M5

R10577399 • 2M5 • P • GEN: 4 • 10/2/2024 • A



MC BOULDER 889Z14

MC SOMETHING SPECIAL 129W14
MC MS EXTRAVAGANT 889X4

Gen. Code

NEVER SURRENDER OF SALACOA 803D9

R10318183

MS BRINKS LOMBARDI 803S25

LOMBARDI OF BRINKS 468N10
MISS BRINKS KO 803J

Term Idx
1.73
55%

GOLD CREEK BRANGUS

CLVR-TJM HUASTEKO 535A

CB FINAL CUT 924X
SF MS NEWSMAN 535R3

Fert Idx
3.77
50%

CLVR MS HUASTEKO 2E4

R10354517

CB MS PASSPORT 2B

CB PASSPORT 803Y11
CB MS BT 2U

	CED	BW	WW	YW	MILK	SC	REA	IMF	HPreg	STAY	MCW
EPDs	7.6	0	24	45	6	0.1	0.28	-0.04	3.59	2.33	6.6
Acc	.38	.47	.45	.38	.30	.42	.43	.50	.23	.13	.22
%Rank	20%	50%	40%	40%	75%	85%	40%	85%	50%	35%	85%

NEVER SURRENDER SON

He is sired by Never Surrender and records top 20% CED. His dam is by our good Final Cut son, Huasteco and out of a Cavender heifer we purchased in Houston in 2015.

Disposition

★★★★

Act BW

90

Adj SC

33.19



LP CROSSROADS 302M

R10569731 • 302M • P • GEN: 6 • 9/23/2024 • A



BWCC CROSS FIT 541B28

MC CROSSOVER 834Y
MC MS LUCIA 541U

Gen. Code
DDF

DMR CROSSROADS 795F7

R10416850

MS DMR CORONADO 795C5

TJM CORONADO 535X
MS DMR JETHRO 795Y2

Term Idx
2.55
30%

LAS PALOMAS RANCH

SUHN'S BUSINESS LINE 30D26

VF-OAKS ONLINE 918Y3
SUHN'S MISS NORTH STAR 30A

Fert Idx
3.47
60%

LP BUSINESS LINE 302J

R10471544

CLVR MS CSONKA 302B27

CSONKA OF BRINKS 30R4
MS BRINKS NEXT STEP 302U2

	CED	BW	WW	YW	MILK	SC	REA	IMF	HPreg	STAY	MCW
EPDs	7.2	-0.3	20	51	-5	0.9	0.38	0.18	3.59	1.83	1.51
Acc	.36	.46	.43	.34	.26	.34	.37	.44	.21	.12	.21
%Rank	25%	40%	55%	30%	>95%	20%	25%	35%	50%	55%	65%

BIG YW AND CARCASS

He is a big powerful Crossroads son. His dam is a Business Line out of the 302 tribe. He boasts big YW, SC, carcass and Terminal Index.

Disposition

★★★★

Act BW

85

Adj SC

36.32



BRIGGS 392M9

R10573949 • 392M9 • P • GEN: 1 • 9/19/2024 • N



DMR CASH FLOW 535F30

S A V RESOURCE 1441
MS DMR CORONADO 535A8

Gen. Code

JM CASH FLOW 23J52

UB10478239

CLVR MISS IRIS 23Y1

SVF GARRETT 274 U229
SVF MS 23S101

Term Idx
2.37
35%

BRIGGS RANCHES

HOLLYWOOD OF SALACOA 23A53

NEW VISION OF SALACOA 209Y2
MS SVF PATTON 23Y66

Fert Idx
3.82
50%

HOLLYWOODBRIGGS 392E

R10349889

SVF WARRIOR KING 392 W111

TCB WARRIOR KING S825
MS 38 CENTER RANCH 392K10

	CED	BW	WW	YW	MILK	SC	REA	IMF	HPreg	STAY	MCW
EPDs	2.7	0.5	17	47	5	0.86	0.41	0.19	4.14	1.91	-9.81
Acc	.33	.40	.40	.32	.25	.33	.35	.43	.16	.10	.21
%Rank	85%	65%	65%	35%	85%	20%	25%	30%	40%	50%	15%

CARCASS

Going back to Cash Flow on the top and Hollywood on the bottom his dam HOLLYWOODBRIGGS 392E has a 396 day calving interval on 7 head. Ranks in the top 25% REA and 30% IMF. REA/CWT 1.25

Disposition

★★★★

Act BW

90

Adj SC

33.74



HARRIS 535M4

R10574594 • 535M4 • P • GEN: 5 • 11/27/2024 • N



TJM THREE D 302A

CB FINAL CUT 924X
OAKS MS PATTON 302X3

Gen. Code
CAF

5K THREE D 392E5

R10351989

KEMPS MS 5K ABRAMS 392Z

MC ABRAMS 468T22
KEMPS MS PAT BEST BET 392W13

Term Idx
%

HARRIS FARMS

NEVER SURRENDER OF SALACOA 803D9

MC BOULDER 889Z14
MS BRINKS LOMBARDI 803S25

Fert Idx
%

HARRIS NEVER SURRENDER 535G

R10433824

MS SVF 23S86 535X20

SVF MR CADENCE 23S86
SVF MS 535P20

	CED	BW	WW	YW	MILK	SC	REA	IMF	HPreg	STAY	MCW
EPDs	5.3	-0.5	32	55	7	0.19	0.4	0.06	6.54	3.27	0.11
Acc	P	P	P	P	P	P	P	P	P	P	P
%Rank	55%	35%	20%	25%	65%	80%	25%	55%	20%	15%	55%

CARCASS

With Three D on the top and Never Surrender on the bottom. He ranks in the top 35% in 9 EPD traits. IMF ratio 124, REA/CWT 1.27 and scanned a ADJ 5.1 IMF

Disposition

★★★★

Act BW

66

Adj SC

32.37



CB 331K8 SIGNAL 3074M10

UB10572043 • 3074M10 • P • GEN: UB2 • 10/8/2024 • N



SUHN'S TTT LM SIGNAL 30E13

TJM THREE D 302A
SCC MISS MYTTY 30Z5

Gen. Code

CRC SIGNAL 331K8

R10507870

SUHN'S MS FINAL CUT 331D47

CB FINAL CUT 924X
SUHN'S MISS ONLINE 331A36

Term Idx
3.31
15%

CAVENDER BRANGUS

CB COUNTY LINE 468H7

GACC LAND LINE 102F1
CB MS TRADITION 468F21

Fert Idx
5.38
10%

CB MS COUNTY LINE 3074K18

UB10514646

CB MS THREE D 3074D

TJM THREE D 302A
SAR LADY JAYE 3074

	CED	BW	WW	YW	MILK	SC	REA	IMF	HPreg	STAY	MCW
EPDs	6.3	-1.3	38	69	9	1.16	0.39	0.1	9.47	4	9.22
Acc	.30	.40	.37	.31	.22	.32	.34	.42	.16	.09	.20
%Rank	35%	20%	10%	10%	45%	10%	25%	45%	5%	2%	95%

CALVING EASE, BIG INDEXES AND REA

He is a calving ease Signal grandson. Three yearling maternal brothers by Hugo averaged \$10,667 last fall at Cavender's. He records big growth, SC, REA and Indexes.

Disposition

★★★★

Act BW

66

Adj SC

37.84

78 ETX DEADWOOD 1026M4

UB10581978 • 1026M4 • P • GEN: UB1 • 10/22/2024 • A

SUHN'S TRAIL BOSS 30B3
SUHN'S AUGUSTUS 416Y14
SUHN'S MISS PATTON 30X5

CB DEADWOOD 60H41
UB10479455
CB MS THREE D 60D3

EAST TEXAS CATTLE CO
CB PASSPORT 803Y11
CB MS PASSPORT 1026C
UB10306782
P F MISS WORTH 2695 1026

TJM THREE D 302A
BASIN LUCY 0060
CB HOMBRE 541T3
MS BRINKS LAMBERT 803T6
S A V NET WORTH 4200
DEERVALLEY QUEEN MOTHER 2695

Gen. Code
Term Idx 4.03
10%
Fert Idx 3.84
45%

	CED	BW	WW	YW	MILK	SC	REA	IMF	HPreg	STAY	MCW
EPDs	3.9	0.4	43	73	4	1.26	0.44	0.42	5.89	2.57	3.97
Acc	.33	.47	.44	.35	.25	.40	.40	.48	.17	.11	.21
%Rank	75%	60%	4%	5%	90%	5%	20%	10%	25%	30%	75%

ELITE GROWTH, BIG CARCASS
He is a powerful Deadwood son. We purchased his dam from Cavender's in the spring of 2018 and she has produced 7 fall calves in a row for us including 1026M4. He boasts elite growth, big SC, carcass and Terminal Index.

Disposition
★★★★
Act BW 80
Adj SC 32.21

79 BRIGGS 392M8

R10574031 • 392M8 • P • GEN: 1 • 10/19/2024 • N

SUHN'S TTT LM SIGNAL 30E13
TJM THREE D 302A
SCC MISS MYTTY 30Z5

SF SIGNAL 535K75
UB10519074
SF MISS ORACLE 535H55

BRIGGS RANCHES
DMR EMPIRE 795D12
BRIGGS EMPIRE 392K6
R10522455
MS SALACOA KHAN 392C15

CB ORACLE 468F15
SF MISS MACK 535E76
TJM THREE D 302A
MS DMR JETHRO 795Y2
KHAN OF SALACOA 535Y22
MS SALACOA LTD 392Y18

Gen. Code
Term Idx 3.23
15%
Fert Idx 5.77
3%

	CED	BW	WW	YW	MILK	SC	REA	IMF	HPreg	STAY	MCW
EPDs	6.1	-0.3	42	65	9	0.82	0.55	0.1	10.72	3.96	4.8
Acc	.32	.39	.41	.33	.23	.37	.38	.46	.16	.10	.20
%Rank	40%	40%	5%	10%	45%	20%	10%	45%	2%	3%	80%

GROWTH
Going back to Suhn TTT Signal on the top and out of Briggs Empire 392K6 who is Briggs Handsome Jacks full sister. He is out of a first calf heifer and ranks in the top 20% in 11 EPD traits. REA/CWT 1.23

Disposition
★★★★
Act BW
Adj SC 34.17

80 CB BIG LEAGUE 117M17

R10572255 • 117M17 • P • GEN: 2 • 10/28/2024 • N

BWCC BIG LAKE 111F4
BWCC CROSS FIT 541B28
BWCC MS ROCK SOLID 111C6

DMR BIG LEAGUE 415J88
R10489638
MS DMR THREE D 415E18

CAVENDER BRANGUS
CB CAPITAL GAIN 924D19
CB MS CAPITAL GAIN 117H3
R10470968
MS LAWMAN LANDAU 117C

TJM THREE D 302A
MS DMR CORONADO 415A7
TJM THREE D 302A
CB MS HOMBRE 924Z11
CRC LANDAU 263X2
VOREL MS DIMENSION 117A2

Gen. Code
Term Idx 2.6
30%
Fert Idx 3.46
60%

	CED	BW	WW	YW	MILK	SC	REA	IMF	HPreg	STAY	MCW
EPDs	6.8	-0.3	28	56	9	0.56	0.3	0.09	10.52	2.37	-1.82
Acc	.36	.46	.39	.33	.24	.34	.36	.43	.18	.10	.20
%Rank	30%	40%	30%	20%	45%	40%	40%	50%	3%	35%	45%

CALVING EASE, MATERNAL BROTHER TO LEDGER
This calving ease prospect is a maternal brother to the \$40,000 Ledger who we own with Bryan McKinney. Their dam posts a 371 day calving interval on 5. 117M17 records big growth and +9 Milk.

Disposition
★★★★
Act BW 53
Adj SC 32.26

81 CB LEDGER 30M17

R10569551 • 30M17 • P • GEN: 1 • 9/9/2024 • E

CB MASTERPIECE 2051F
SUHN'S TRAIL BOSS 30B3
A CROSS RITA A2051

CB LEDGER 117K19
UB10514709
CB MS CAPITAL GAIN 117H3

CAVENDER BRANGUS
NEVER SURRENDER OF SALACOA 803D9
PRB MS N SURRENDER 30J31
R10494519
QVF MS STONEWALL 30G40

CB CAPITAL GAIN 924D19
MS LAWMAN LANDAU 117C
MC BOULDER 889Z14
MS BRINKS LOMBARDI 803S25
STONEWALL OF RRR 222W6
T3 MS THREE D 30D

Gen. Code
Term Idx 3.02
20%
Fert Idx 4.14
35%

	CED	BW	WW	YW	MILK	SC	REA	IMF	HPreg	STAY	MCW
EPDs	7.8	-0.6	38	61	5	0.89	0.45	0.15	8.05	2.79	-1.97
Acc	.32	.41	.38	.37	.23	.43	.43	.51	.17	.09	.20
%Rank	20%	30%	10%	15%	85%	20%	20%	40%	10%	25%	45%

CALVING EASE, BIG GROWTH, REA AND INDEXES
He is a calving ease Ledger son. Four full sibs averaged \$13,500 as yearlings in our fall sale. Their donor dam was our \$33,000 selection from Phillips Ranch in their 2023 sale. He boasts big growth, SC, REA and Indexes.

Disposition
★★★★
Act BW 58
Adj SC 36.05

82 CB HUGO 30M5

UB10571804 • 30M5 • P • GEN: UB2 • 9/3/2024 • E

BWCC MCQUEEN 192E24
BWCC CROSS FIT 541B28
BWCC MS CHILL FACTOR 192A60

BWCC HUGO 484H7
R10472434
BWCC MS BOULDER 487B18

CAVENDER BRANGUS
DEER VALLEY GROWTH FUND
HF MS GROWTH FUND 30K13 ET
UB10509592
T3 MS THREE D 30D

MC BOULDER 889Z14
BWCC MS STRYKER 487W4
BASIN PAYWEIGHT 1682
DEER VALLEY RITA 36113
TJM THREE D 302A
MS SALACOA ATLANTA 30B5

Gen. Code
Term Idx 3.2
20%
Fert Idx 3.32
65%

	CED	BW	WW	YW	MILK	SC	REA	IMF	HPreg	STAY	MCW
EPDs	7.5	-1.9	33	50	8	0.01	0.3	0.42	7.77	2.62	3.06
Acc	.32	.41	.39	.38	.22	.42	.43	.51	.18	.09	.20
%Rank	20%	10%	20%	30%	55%	90%	40%	10%	15%	30%	70%

CALVING EASE, BIG GROWTH AND IMF
He is a calving ease Hugo son. His full brother sold for \$14,000 as a yearling at the Briggs Ranch Sale last fall. We own his donor dam with B/K Beef and they sold a maternal sib to 30M5 for \$16,000 at Cavender's fall sale. He records big growth, IMF and Terminal Index.

Disposition
★★★★
Act BW 64
Adj SC 30.4

83 ACC SENSATION 649M17

R10586938 • 649M17 • P • GEN: 1 • 10/28/2024 • N

2H PRETTY COOL 294C
2H BE COOL 313S4
2H MISS PRETTY SWEET 294U6

MP/RCC SENSATION 804J
UB10465094
DDD GIRL PLAYBOOK 804F85

KATHERINE ALLEN
MR DANN 7A
ACC FANCY 649F4
R10406942
ACC KATE 649Y2

TEX PLAYBOOK 5437
DDD MS KESLEY 804W2
MR CCC MOSSBERG 99X23
DANNMS MS 7W9
SKYHAWKS PRESIDENTE
ACC SADIE 649S2

Gen. Code
Term Idx 0.75
90%
Fert Idx 3.83
45%

	CED	BW	WW	YW	MILK	SC	REA	IMF	HPreg	STAY	MCW
EPDs	2.4	1.6	10	23	9	0.31	0.19	-0.01	2.98	1.8	-5.36
Acc	.14	.31	.26	.08	.08	.06	.07	.09	.02	.01	.01
%Rank	85%	90%	85%	90%	45%	65%	55%	75%	55%	55%	30%

FERTILITY
A Sensation son That has a REA/CWT 1.16

Disposition
★★★★
Act BW 78
Adj SC 34.14



ETX BRICKHOUSE 415M3

R10581982 • 415M3 • P • GEN: 1 • 10/31/2024 • N

SF BRICKHOUSE 909D9

SUHN'S FOUNDATION 331Z28
SF MISS LTD 909Z4



Gen. Code

CB BRICKHOUSE 60G8

UB10418191

CB MS PASSPORT 60C2

CB PASSPORT 803Y11

BASIN LUCY 0060

Term Idx

3.01

20%

EAST TEXAS CATTLE CO

CB COWBOY CUT 627E5

CB MS NEW CONCEPT 627A2

Fert Idx

4.25

30%

CB MS COWBOY CUT 415G57

R10422541

CB MS HOMBRE 541A6

CB HOMBRE 541T3

CB MS BLANDA 415X7

	CED	BW	WW	YW	MILK	SC	REA	IMF	HPreg	STAY	MCW
EPDs	0.5	1.6	35	66	7	1.58	0.42	0.14	4.02	2.29	-1.95
Acc	.31	.46	.43	.32	.24	.33	.35	.43	.10	.21	
%Rank	95%	90%	15%	10%	65%	2%	20%	40%	45%	40%	45%

BIG GROWTH, REA AND INDEXES

Sired by our good Brickhouse son, he records big growth, SC, REA and Indexes. We purchased his Cowboy Cut dam in the spring of 2021 and she and her maternal sibs generated over \$100,000 at Cavender's.

Disposition

★★★★

Act BW

80

Adj SC

33.38



CB EXPRESS 90M

UB10572045 • 90M • P • GEN: UB2 • 10/18/2024 • N

BWCC MONUMENT 10D7

MC BOULDER 889Z14
BWCC MS RESOURCE 10A10



Gen. Code

DMR EXPRESS 415J134

R10480419

MS DMR BEACON 415E133

SUHN'S MAJESTIK BEACON 30C

MS DMR CORONADO 415A7

Term Idx

2.61

30%

CAVENDER BRANGUS

DMR CHILL FACTOR 99H16

MS DMR THREE D 99E4

Fert Idx

4.51

25%

CB DMR CHILL FACTOR 90K5

UB10514722

CB MS THREE D 90F2

TJM THREE D 302A

CB MS PASSPORT 406B10

	CED	BW	WW	YW	MILK	SC	REA	IMF	HPreg	STAY	MCW
EPDs	12.1	-4.1	15	35	3	1.15	0.54	0.3	10.73	3.26	1.86
Acc	.37	.47	.45	.36	.23	.38	.40	.48	.17	.10	.20
%Rank	2%	1%	70%	65%	90%	10%	10%	20%	2%	15%	65%

CALVING EASE, BIG CARCASS AND INDEXES

This calving ease Express son boasts big carcass values and big Indexes. Out of a first calf heifer his dam calved him at 24 months of age and posts 2 @ 364 days.

Disposition

★★★★

Act BW

44

Adj SC

37.25



CB 331K8 SIGNAL 468M65

R10572042 • 468M65 • P • GEN: 1 • 10/14/2024 • N

SUHN'S TTT LM SIGNAL 30E13

TJM THREE D 302A
SCC MISS MYTTY 30Z5



Gen. Code

CRC SIGNAL 331K8

R10507870

SUHN'S MS FINAL CUT 331D47

CB FINAL CUT 924X

SUHN'S MISS ONLINE 331A36

Term Idx

3.28

15%

CAVENDER BRANGUS

VOREL CURRENCY 25E8

BARSTOW BANKROLL B73

Fert Idx

4.98

15%

CB MS VOREL CURRENCY 468K68

UB10514631

CB MS THREE D 468C10

TJM THREE D 302A

MS SOUTHERN REAL DEAL 468W36

	CED	BW	WW	YW	MILK	SC	REA	IMF	HPreg	STAY	MCW
EPDs	7.5	-1.9	39	71	5	0.76	0.43	0.02	9.21	3.83	13.88
Acc	.30	.40	.38	.31	.23	.32	.34	.42	.16	.10	.20
%Rank	20%	10%	10%	10%	85%	25%	20%	65%	10%	4%	>95%

CALVING EASE, BIG GROWTH AND INDEXES

He is a calving ease prospect. He boasts big growth, SC, REA and Indexes. His donor dam is by Currency. Her maternal sibs have generated in excess of \$166,000 in our program.

Disposition

★★★★

Act BW

68

Adj SC

36.58



CB HONDO 2051M33

UB10572200 • 2051M33 • P • GEN: UB2 • 9/9/2024 • A

CB PR PRIME CUT 415E11

TJM THREE D 302A
CB MS NORTH STAR 415Z



Gen. Code

CB HONDO 60J30

UB10489409

CB MS PASSPORT 60C2

CB PASSPORT 803Y11

BASIN LUCY 0060

Term Idx

1.89

50%

CAVENDER BRANGUS

CB SPECIAL DELIVERY 803F2

CB MS HOMBRE 803A4

Fert Idx

4.36

30%

CB MS SPECIAL DELIVERY 2051H

UB10450287

CB MS PASSPORT 2051C

CB PASSPORT 803Y11

A CROSS RITA A2051

	CED	BW	WW	YW	MILK	SC	REA	IMF	HPreg	STAY	MCW
EPDs	9.3	-2	25	31	7	1.14	0.18	0.18	5.01	2.55	4.79
Acc	.35	.46	.44	.36	.23	.41	.41	.50	.16	.10	.21
%Rank	10%	10%	40%	75%	65%	10%	55%	35%	35%	30%	80%

CALVING EASE, IMF AND FERTILITY

He is a calving ease specialist sired by the \$30,000 Hondo. His maternal brother by Gunsmoke sold for \$9,000 in the fall of 24 Cavender Sale. He records calving ease, big SC, IMF and Fertility.

Disposition

★★★★

Act BW

70

Adj SC

37.75



HARRIS 535M6

R10574596 • 535M6 • P • GEN: 6 • 11/20/2024 • N

TJM THREE D 302A

CB FINAL CUT 924X
OAKS MS PATTON 302X3



Gen. Code

CAF

5K THREE D 392E5

R10351989

KEMPS MS 5K ABRAMS 392Z

MC ABRAMS 468T22

KEMPS MS PAT BEST BET 392W13

Term Idx

1.54

60%

HARRIS FARMS

TC PARAGON 30D4

TC MS NEW VISION 30A3

Fert Idx

5.66

3%

HARRIS PARAGON 535G5

R10433838

MS SVF 23S86 535X20

SVF MR CADENCE 23S86

SVF MS 535P20

	CED	BW	WW	YW	MILK	SC	REA	IMF	HPreg	STAY	MCW
EPDs	5.6	-2	15	26	6	-0.27	0.19	0.13	7.7	3.71	-1.96
Acc	.34	.40	.42	.34	.24	.39	.40	.48	.16	.12	.21
%Rank	50%	10%	70%	85%	75%	>95%	55%	40%	15%	5%	45%

CALVING EASE

With Three D on the top and Paragon on the bottom. He ranks in the top 10% BW. REA/CWT 1.26

Disposition

★★★★

Act BW

Adj SC

31.08



HARRIS 274M4

R10574597 • 274M4 • P • GEN: 6 • 11/27/2024 • N

TJM THREE D 302A

CB FINAL CUT 924X
OAKS MS PATTON 302X3



Gen. Code

5K THREE D 392E5

R10351989

KEMPS MS 5K ABRAMS 392Z

MC ABRAMS 468T22

KEMPS MS PAT BEST BET 392W13

Term Idx

2.12

40%

HARRIS FARMS

ATLANTA OF SALACOA 488Z

MS SVF CADENCE 488X11

Fert Idx

5.09

10%

HARRIS MS ATLANTA 274G3

R10433849

HARRIS MS HOLLYWOOD 274E3

HOLLYWOOD OF SALACOA 23A53

MS SVF UPPERCUT 274W

	CED	BW	WW	YW	MILK	SC	REA	IMF	HPreg	STAY	MCW
EPDs	5.3	-0.8	25	45	5	-0.02	0.36	0.03	8.6	3.03	-6.2
Acc	.34	.45	.42	.34	.24	.39	.39	.48	.16	.13	.22
%Rank	55%	30%	40%	40%	85%	95%	30%	65%	10%	15%	25%

CALVING EASE

Three D on the top and Atlanta and Hollywood on the bottom. He ranks in the top 30% BW. REA/CWT 1.26

Disposition

★★★★

Act BW

Adj SC

32.37

90 BRIGGS PRESIDENTE 274M2

R10573950 • 274M2 • P • GEN: 5 • 9/21/2024 • E

MR CR FRED 99/N26
SG TONTO 820H7
MS 38 CENTER RANCH 99/K1

SKYHAWKS PRESIDENTE
R10025207 SVF-D BAR D MS ALICE

BRIGGS RANCHES
UPPERCUT OF BRINKS 14J8
MS SVF UPPERCUT 274W
R10136383 SVF MS 274S3

ALI OF BRINKS 209J2
SALACOA PINE LASS 23D2
KO OF BRINKS 392F10
MS BBCC BIG EASY 14D3
LEAD GUN OF BRINKS 222K14
MISS JLS REVENUE 274N6

CED	BW	WW	YW	MILK	SC	REA	IMF	HPreg	STAY	MCW	
EPDs	3.9	0.4	24	38	10	0.3	0.42	-0.05	4.38	2.3	-11.96
Acc	.36	.44	.42	.39	.32	.43	.44	.51	.23	.18	.25
%Rank	75%	60%	40%	55%	35%	70%	20%	90%	40%	40%	10%

Disposition
★★★★
Act BW 60
Adj SC 31.82

91 LP ELDORADO 541M36

R10582460 • 541M36 • P • GEN: 6 • 8/27/2024 • E

TJM CORONADO 535X
CB HOMBRE 541T3
MS BRINKS LAMBERT 535T4

DMR ELDORADO 30B15
R10284830 SUHN'S MISS PATTON 30X6

LAS PALOMAS RANCH
NEW VISION OF SALACOA 209Y2
CLVR MS NEW VISION 541C6
R10302448 MS BRINKS GD FORTUNE 541P103

PATTON OF BRINKS 30T22
SUHN'S MS DUKE 30M
LAMBERT OF BRINKS 317R3
MS BRINKS BRIGHT SIDE 209L11
GOOD FORTUNE OF BRINKS 14H3
MS BRINKS TRANSFORMER 541M40

CED	BW	WW	YW	MILK	SC	REA	IMF	HPreg	STAY	MCW	
EPDs	6.1	-0.8	17	34	-1	0.69	0.12	0.19	4.71	1.3	-13.73
Acc	.35	.43	.41	.35	.31	.36	.38	.44	.24	.17	.22
%Rank	40%	30%	65%	65%	>95%	30%	65%	30%	35%	75%	10%

Disposition
★★★★
Term Idx 1.78
Fert Idx 65%

92 LP ELDORADO 541M35

R10582461 • 541M35 • P • GEN: 6 • 8/20/2024 • E

TJM CORONADO 535X
CB HOMBRE 541T3
MS BRINKS LAMBERT 535T4

DMR ELDORADO 30B15
R10284830 SUHN'S MISS PATTON 30X6

LAS PALOMAS RANCH
NEW VISION OF SALACOA 209Y2
CLVR MS NEW VISION 541C6
R10302448 MS BRINKS GD FORTUNE 541P103

PATTON OF BRINKS 30T22
SUHN'S MS DUKE 30M
LAMBERT OF BRINKS 317R3
MS BRINKS BRIGHT SIDE 209L11
GOOD FORTUNE OF BRINKS 14H3
MS BRINKS TRANSFORMER 541M40

CED	BW	WW	YW	MILK	SC	REA	IMF	HPreg	STAY	MCW	
EPDs	6.1	-0.8	17	34	-1	0.69	0.12	0.19	4.71	1.3	-13.73
Acc	.35	.43	.41	.35	.31	.36	.38	.44	.24	.17	.22
%Rank	40%	30%	65%	65%	>95%	30%	65%	30%	35%	75%	10%

Disposition
★★★★
Term Idx 1.78
Fert Idx 65%

93 CB SIGNAL 75M32

R10572038 • 75M32 • P • GEN: 1 • 10/15/2024 • N

SUHN'S TTT LM SIGNAL 30E13
TJM THREE D 302A
SCC MISS MYTTY 30Z5

CRC SIGNAL 331K8
R10507870 SUHN'S MS FINAL CUT 331D47

CAVENDER BRANGUS
CB MASTERPIECE 2051F
CB MS MASTERPIECE 75K30
UB10514576 CB MS THREE D 75D5

CB FINAL CUT 924X
SUHN'S MISS ONLINE 331A36
SUHN'S TRAIL BOSS 30B3
A CROSS RITA A2051
TJM THREE D 302A
CB MS ONSTAR 75Y13

CED	BW	WW	YW	MILK	SC	REA	IMF	HPreg	STAY	MCW	
EPDs	7.7	-1.8	20	41	1	0.95	0.18	-0.07	9.9	4.44	12.11
Acc	.34	.46	.43	.33	.24	.37	.38	.46	.16	.10	.20
%Rank	20%	15%	55%	50%	>95%	15%	55%	90%	4%	1%	95%

Disposition
★★★★
Term Idx 1.56
Fert Idx 2%

94 B/K ACE OF SPADES 222M

UB10586459 • 222M • P • GEN: UB2 • 9/17/2024 • E

NEVER SURRENDER OF SALACOA 803D9
MC BOULDER 889Z14
MS BRINKS LOMBARDI 803S25

ACE OF SPADES 406J
UB10476024 MS SALACOA CARCASS DSN 406E

KLEIN B/K BEEF
DMR EMPIRE 795D12
MS DMR EMPIRE 222H5
UB10465207 MS DMR CAPITALIST 222E26

TTR CARCASS DESIGN
TTR A6051 U0286 X6200
TJM THREE D 302A
MS DMR JETHRO 795Y2
CONNELLY CAPITALIST 028
MS DMR DYNASTY 222C15

CED	BW	WW	YW	MILK	SC	REA	IMF	HPreg	STAY	MCW	
EPDs	6.1	0.3	46	69	3	0.84	0.33	0.07	7.56	3.33	3.83
Acc	.21	.22	.22	.26	.09	.29	.30	.37	.09	.04	.01
%Rank	40%	55%	2%	10%	90%	20%	35%	55%	15%	10%	75%

Disposition
★★★★
Term Idx 3.07
Fert Idx 10%

95 B/K EMPIRE 117M8

R10586457 • 117M8 • P • GEN: 5 • 9/10/2024 • E

TJM THREE D 302A
CB FINAL CUT 924X
OAKS MS PATTON 30Z3

DMR EMPIRE 795D12
R10323531 MS DMR JETHRO 795Y2

KLEIN B/K BEEF
CB CAPITAL GAIN 924D19
CB MS CAPITAL GAIN 117H20
R10470998 MS LAWMAN LANDAU 117C

MC JETHRO 00S3
MS BRINKS UPPERCUT 795R9
TJM THREE D 302A
CB MS HOMBRE 924Z11
CRC LANDAU 263X2
VOREL MS DIMENSION 117A2

CED	BW	WW	YW	MILK	SC	REA	IMF	HPreg	STAY	MCW	
EPDs	6.8	0.2	30	52	3	0.36	0.34	-0.08	10.65	2.59	0.85
Acc	.22	.22	.22	.28	.19	.31	.31	.38	.18	.10	.03
%Rank	30%	55%	25%	30%	90%	60%	30%	95%	2%	30%	60%

Disposition
★★★★
Term Idx 1.99
Fert Idx 40%

BIG GROWTH, REA, INDEXES
He is an Ace son out of an Empire daughter. This spring, Cavender bulls sales will be heavily influenced by the Ace progeny. He records big growth, SC, REA and Indexes.

BIG GROWTH AND REA
His dam was our \$20,000 choice in Cavender's Spring 2022 Female sale. She is a full sister to the dam of Ledger and her maternal sibs have totaled over \$133,000 in revenue at Cavender's. He records big growth and REA.

A N N U A L C O M M E R C I A L H E I F E R S A L E

125 Head of Commercial Heifers

March 17, 2026

Selling Santa Gertrudis x Brangus and Santa Gertrudis x Hereford heifers

Females will be sold immediately after the bull sale.

A sheet with all pertinent information will be provided sale day.








You drive, we'll help steer

As a local cooperative, we share our profits with the Texans we serve. Since 2006, we've returned almost \$2 billion in combined cash and allocated equities to our members through our cooperative returns program. So, when you're ready to expand or enhance your ranching operation, try a partnership that really pays. **Together we're better.**

VICTORIA 361.582.9500

 **NMLS493828 | capitalfarmcredit.com**

BRIGGS RANCHES

PO Box 609
Bloomington, TX 77951

Presorted
First Class
US Postage
PAID
SlateGroup

DIRECTIONS

From Victoria - Off Loop 175 take Hwy 185 South to Bloomington. Then approximately 1.3 miles South of Bloomington, turn Right on Traylor Rd., enter main gate on paved road, travel approximately one mile West to ranch headquarters. Look for the signs.



TEXAS  ALLIANCE SALE