



Proven Performance
TEXAS  **ALLIANCE SALE**

3 . 1 8 . 2 0 2 5
B L O O M I N G T O N , T E X A S

BRIGGS RANCHES, TRAYLOR DIVISION IN BLOOMINGTON, TX
Located 13 Miles South of Victoria, TX

Coming 2 Year Old Bulls
BRANGUS, ULTRABLACK & SANTA GERTRUDIS
PLUS 125 Commercial Females

T E X A S

WELCOME CATTLE PRODUCERS AND FRIENDS

Dear Friends,

On behalf of the Texas Alliance Sale group, I would like to welcome you to our annual bull and commercial female sale to be held March 18, 2025 at Briggs Ranches Traylor Division. Our group consists of Briggs Ranches Harris Riverbend Farms, San Jose Cattle and Cavender Ranches. These consigners represent a great set of Brangus and Santa Gertrudis bulls plus a good set of commercial females. The bulls being offered have been sorted on many times in their lives, only the bulls that meet a strict culling program make it this sale. Needless to say, you can purchase with confidence that these bulls will perform.

We are currently entering unbelievable times in the cattle business. Never before in my life time have, I seen calves bring what they do today. Replacement females are hard to find and have increased in value also.

Spring is near, hopefully green grass and rain will come. Now is the time to up grade your bull battery and look for replacement females.

On behalf of the Briggs Family and staff, we welcome you to the ranch and hope to see you here on March 18th.

If we can be of any assistance in any way, please do not hesitate to contact us.

Su Amigo,

Joe Jones

General Manager of Briggs Ranches — 361-550-0994

Tol Cawley, Assistant Manger — 936-581-1174

Kelsey Cawley — 361-649-9778

Justin Brown — 210-422-9855

Mark Cowan — 903.495.4522

Justin Matejka — 903.521.1070

Joe Cavender — 903.571.1209

Todd Harvey — 386.288.8059



ALLIANCE

Bloomington, Texas

SCHEDULE OF EVENTS

MONDAY, MARCH 17TH

2:00 PM Cattle available for viewing

TUESDAY, MARCH 18TH

8:00 AM Cattle available for viewing

9:30 AM South Texas Cowboy Brunch

11:00 AM Texas Alliance Bull Sale

Commercial female sale to follow immediately

TEXAS  ALLIANCE SALE



SALE DAY CONTACTS

BRIGGS RANCHES

Joe Jones - General Manager: (C) 361.550.0994
 Kelsey Cawley: (O) 361.897.1337 • (C) 361.649.9778
 Tol Cawley: (O) 361.897.1337 • (C) (936)581-1174

XB

HARRIS RIVERBEND FARM

David & Laurie Harris:
 (O) 817.641.4771 • (H) 817.641.4159 • (C) 817.996.5866
 Abrian Harris: (C) 817.517.3006

H

CAVENDER RANCHES

Joe Cavender - Owner • 903.571.1209
 Justin Matejka - General Manager • 903.521.1070
 Mark Cowan - Marketing and Customer Service • 903.495.4522
 Todd Harvey - Marketing and Customer Service • 386.288.8059
 Dustin Kennedy - Registered Cattle Manager • 903.810.2413



AUCTIONEER

Doak Lambert • 972.839.6485

RINGMEN

Jim Banner - Southern Livestock Standard
 Charlie Wood - Gulf Coast Cattleman
 Ralph Means - Weekly Livestock Reporter
 Bret Griffith - Special Assignment

HOTEL ACCOMODATIONS

Homewood Suites - 361.578.1900
 Comfort Inn & Suites - 361.894.6480
 Lonestar Inn & Suites - 361.579.0225
 La Quinta - 361.237.3051 *Ask for the front desk and the BRIGGS SALE*

CATTLE TRANSPORTATION

Darrell Pitchford - 903.388.2288

LOAD OUT

Cattle will be loaded out at the conclusion of the sale and after proper settlement is made.

HEALTH PAPERS

Health papers will be provided on each lot in the sale suitable for interstate shipment.

CATALOG PRODUCED BY

Cattle Solutions
 979.820.8362 • kyle@cattlesolutions.com



VIDEOS PRODUCED BY

Ideal Video Productions, LLC
 254.319.5349 • wade@idealvideoproductions.com



VIDEOS OF SALE CATTLE ARE AVAILABLE AT

www.idealvideoproductions.com
www.briggsranches.com
www.cavenderranches.com

TEXAS  **ALLIANCE SALE**

SIGHT UNSEEN PURCHASE OPTION

If you are unable to attend the auction in person or watch DVAuctions internet broadcast, simply contact the marketing team:

- Describe your selection criteria and the type of bull(s) and/or female(s) you wish to purchase and your price range.
- You pay only the bid price, just as if you were bidding in person.
- We will call after the sale to confirm your purchase and you can confirm your payment method and arrange shipping.
- You decide if the animal meets your criteria upon delivery. If you are not happy with your purchase, you don't own it.



2025 BULL SALE PARTICIPANTS

BAR X BRANGUS
Cowan Family | Detroit, TX

BRIGGS RANCHES
Bloomington, TX

CAVENDER BRANGUS
Joe Cavender | Tyler, TX

EAST TEXAS CATTLE CO
David & Noemi Cannon | Bullard, TX

GOLD CREEK BRANGUS
Oskar Juarez | Marietta, GA

HARRIS FARMS
David & Lauri Harris | Cleburne, TX

J&L CATTLE CO
Justin Massey | Glen Rose, TX

LAS PALOMAS RANCH
Pepe Medina | Marietta, GA

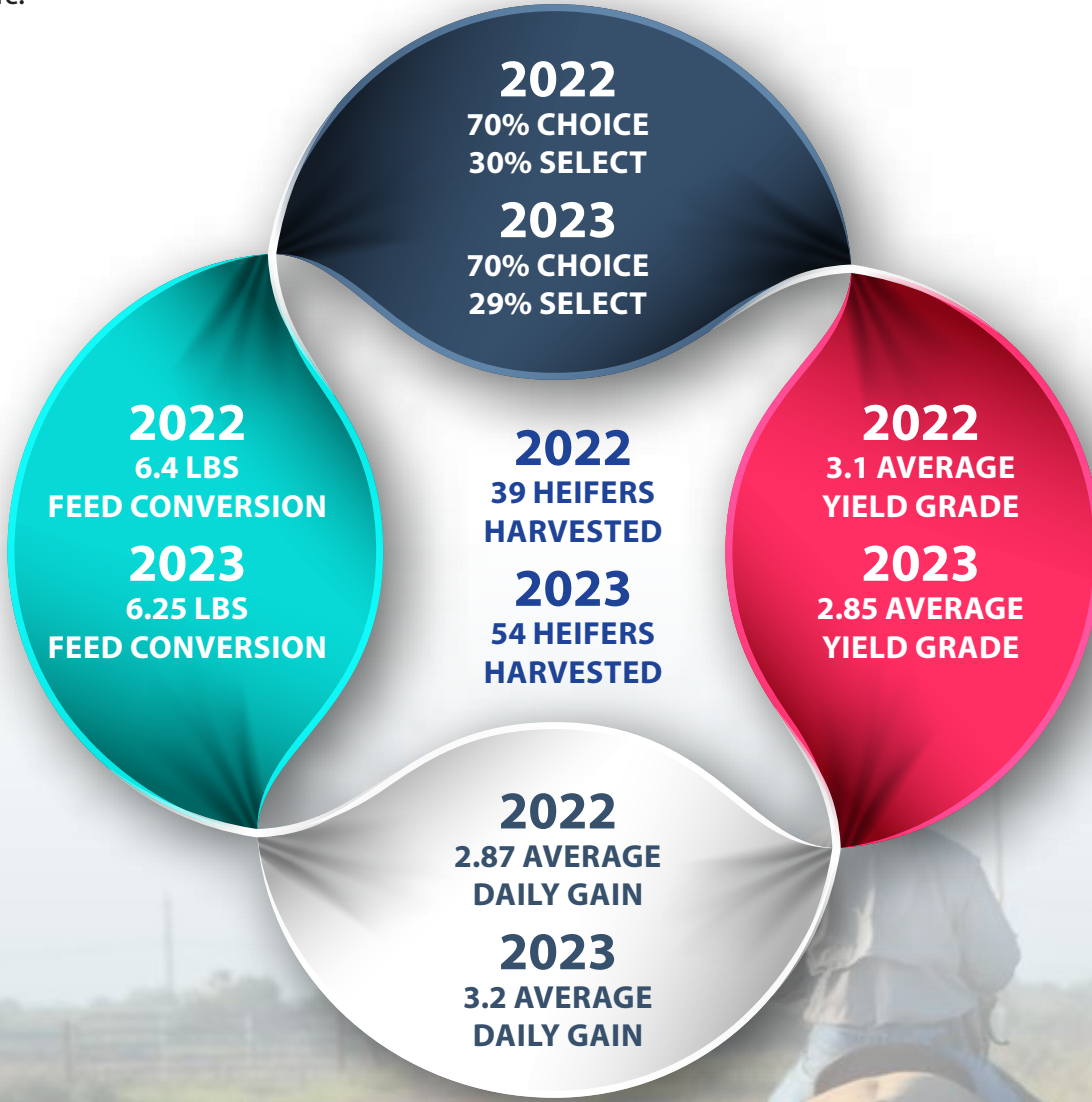
PENNRIDGE RANCH
Pete Deleeuw | Paige, TX

SAN JOSE CATTLE CO
Perry & Abrian Bass | Kingsville, TX



BRIGGS RANCHES SLAUGHTER HEIFER DATA

In today's cattle industry there are many top qualities that the commercial cattlemen look for and strive for on purchasing their replacement females or replacement bulls. A lot of those qualities consists of performance, structure, carcass data. These three things have been Briggs Ranches top priorities since the very beginning. We have been striving for years to be able to produce the top-quality bulls and females for the commercial cattlemen on structural soundness and performance data. For years, we have been collecting performance data and have set strict criteria on our bulls and females. For the last year and half, we have been focusing on feedlot performance and carcass data on our females. It has been a long time coming and the results are here.



Harvest Date	Head	Yield 1-3	Yield 4-5	%YG3+	Choice+	Select-	%Choice+	Live Wt	HCW	Dressing%	Notes	Feed Conversion
4/18/24	13	9	4	69%	9	4	69%	1441	921.62	64%	F1 Akaushi	6.21
11/19/22	39	26	13	67%	27	12	69%	1286	823.03	64%	Steers	6.4
3/7/23	21	19	2	90%	14	7	67%	1275	802.05	63%	Steers	6.17
12/28/23	33	25	8	76%	23	10	70%	1379	811.86	59%	Heifers	6.34
4/18/24	25	21	4	84%	18	7	72%	1227	792.44	65%	Heifers	5.69
5/6/24	19	17	3	85%	16	4	80%	1298	774.67	60%	Heifers	5.69
9/10/24	31	23	8	74%	25	5	83%	1255	779.9	62%	Heifers	5.86
TOTAL	168	131	38	78%	123	45	73%	7720.00	4783.95	62%	HEIFERS	6.03

TERMS & CONDITIONS

Bidding

Each animal will be sold to the highest bidder without reserve. The auctioneer will settle any disputes as to bids and his decision on such matters shall be final.

Terms

Each animal becomes the risk of the purchaser as soon as sold, but it shall be the obligation of the seller to see that animals are fed and cared for until loaded for shipment or until the expiration of 48 hours after the sale, whichever occurs sooner. After 48 hours a maintenance fee of \$5.00 per day will be assessed until pickup, unless AMS arranges shipment.

Certificate of Registry

A transferred certificate of registry will be furnished to the purchaser for each registered bull or registered female once proper settlement has been made.

Health

Health papers suitable for interstate shipment will be furnished on all animals.

Announcements

Any changes from the information of any kind in this catalog will be provided in a sale day supplement sheet or announced from the auction block and such information shall take precedence over cataloged information.

Breeding Guarantee

1. All animals are guaranteed to be breeders with the exception of: a) calves under 12 months of age; b) animals shown by purchaser after sale in which the guarantee (if any) shall be between the seller and the buyer; c) injury or disease occurring after the sale; d) gross negligence or willful misconduct on the part of the purchaser; e) death by any reason.
2. Any bull which settles cows by natural service and passes a fertility test made by competent veterinarians, mutually agreed upon by the buyer and seller, during any six month period of trial (provided for in paragraph 2 of the section of these sales terms and conditions entitled "Options and Privileges of Return or Adjustment") shall be considered a breeder. All partial interest bulls are guaranteed to produce freezeable quality semen.
3. Safe in calf females have been examined by competent personnel and are so guaranteed.
4. Exposed females have been exposed but are not guaranteed to be safe in calf.

5. Open females have not been served and are so guaranteed.

Pregnancy Determination

The females in this sale noted safe in calf have been determined pregnant by physical palpation. Our best estimate of service sire will be given in the case of the females with both an A.I. sire and a natural breeding sire.

Options and Privileges of Return or Adjustment

1. All claims for adjustment or refund must be made in writing within six months of the sale date.
2. In the event an animal is claimed to be a non-breeder, the animal may be returned to the seller if in good condition and complying with the health requirements of Texas. The seller shall be entitled to a six month trial following the return of the animal in which to prove that the animal is a breeder. If at the end of six months the seller is unable to prove the animal is a breeder, the seller shall at the option of the buyer replace the animal with another of equal value or issue a credit for the initial selling price. If the seller proves the animal to be a breeder, it shall be the obligation of the purchaser to take delivery of the animal and pay all expenses incurred for transportation.
3. If a bull is sold and at a later date proves not to be eligible for registration under association rules, the seller shall be obligated to make a satisfactory adjustment on the purchase price to the buyer, refund the purchase price or issue a credit for the initial selling price upon the return of the animal to the farm of the seller.
4. If an animal is sold and through DNA is proven to have incorrect parentage as represented by the certificate of registration, and for which the parentage can be determined, the seller shall be obligated to make a satisfactory adjustment on the purchase price to the buyer, refund the purchase price or issue a credit for the initial selling price upon the return of the animal to the farm of the seller.

Rights and Obligations

1. The above terms and conditions of sale shall constitute a contract between the buyer and seller of each animal and shall be equally binding on both. Other than the guarantees and warranties stated above, no other warranties or guarantees are expressed or implied. Each sale or resale of an animal constitutes a separate transaction.
2. No person connected with the management of the sale assumes no liability, legal or otherwise.

Watch & bid online for FREE at

DVAuction
Broadcasting Real-Time Auctions

Can't make the sale? Bid from home with DV Auction's "real-time" internet bidding service!

Buying online is as easy as 1, 2, 3...

1. Create an account at www.dvauction.com under the "register" tab
2. Apply for bidding approval by clicking on the "details" tab at least 24 hours prior to the auction-a DV representative will notify you once you have been approved
3. Tune in for the sale and make your purchases!

After the sale, contact the sale manager or owner to arrange transportation and payment. **High speed internet** is required for successful bidding-be sure to check the lag-time monitor in the top left corner to ensure real-time broadcasts.

Proxy Bidding-if you can't make time to watch the sale, register a proxy bid and let our system represent your bid while you're away. Look for the "proxy bid" tab on the auction listing, and fill in your maximum bids. We'll handle the rest!



Having troubles? During the auction, you can type a message to the operator at any time for assistance. Our full-time support team can also always be reached at (402) 474-5557.

DVAuction
Broadcasting Real-Time Auctions

Full Service Livestock Marketing

Video - Photography - The Stock Exchange - Ring Service - Banner Ads - Onsite Viewing Service

DATA KEY SANTA GERTRUDIS

Lot Number →  **BRIGGS 217K3 ET**  **Registered Name** followed by Registration# / Animal ID / Date of Birth / Horn-Polled Status

20226867 • 217K3 • 09/15/2022 • Horned

Three Generation Pedigree and Consignor Name →

KR1195/15	KR 545/12	
20183702	KR 245/10 F1	
DSR CHERRY 923 1B	DS PHOENIX 611	
BRIGGS RANCHES	DEAN-HARRIS 022/4 (ET) 022/4	
ROBERTO BRIGGS 072/13	BRIGGS 580/0	
BRIGGS 217G	BRIGGS 092/10	
20191968	MR. DOUBLE TT RICK 10/9	
MYERS 14/10	MISS DOUBLE TT 110	

Footnotes → A Full Brother to Lot 1 and he is just as good. This Chosen one KR 651/18 son has a REA/CWT 1.14, IMF 4.5 and ranks in the top 45% in 12 EPD traits

	BW	WW	YW	MILK	TM	SC	HCW	REA	MARB	FT
EPDs	0.5	.17	.21	-.1	12	0.39	2	0.04	0.15	-0.006
Acc	.19	.20	.27	.09	--	.10	.10	.25	.36	.39
%Rank	75%	20%	25%	60%	20%	45%	30%	45%	20%	20%

Disposition ★★★★★



Act BW 70
Adj SC 34.1

Indexes Balance / Cow-Calf / Terminal

SGBI Expected Progeny Differences: EPD / EPD Accuracy / EPD % Ranking within breed

Disposition Score: Followed by Actual Birth Weight and Adjusted Scrotal. See bottom of page for description and scoring table.

DATA KEY BRANGUS

Lot Number →  **CB BIG HOSS 313K3**  **Registered Name**

R10508941 • 313K3 • P • GEN: 1 • 1/26/2022 • E

Three Generation Pedigree and Consignor Name →

BWCC BIG TOWN 192B16	MC NUFF SAID 889T50	
MC BIG HOSS 541G50	BWCC MS REVELATION 192W8	
UB10449616	S A V RESOURCE 1441	
MC MS RESOURCE 541A4	MC MS ROCK STAR 541X10	
CAVENDER BRANGUS	BWCC BIG TOWN 192B16	
MC BIG TEX 541F2	MC MS RESOURCE 541A4	
BWCC MS BIG TEX 313H6	MC SPECIAL FORCES 924Y4	
R10452031	RBM MS RITE DIRECTION 313X3	
RBM MS SPECIAL FORCES 313A		

Footnotes → He is big ribbed and big topped with a classic profile. His sire is a full brother to Five Star and Big City. His dam is a daughter of the famous 313A donor. He posts EPDs projecting big growth, Milk, SC, carcass and Indexes.

	CED	BW	WW	YW	MILK	SC	REA	IMF	HPreg	STAY	MCW
EPDs	4.7	0.7	.39	.65	11	1.21	0.59	0.34	10.63	3.06	4.24
Acc	.31	.42	.38	.31	.23	.33	.37	.44	.16	.10	.21
%Rank	60%	60%	10%	15%	25%	10%	10%	15%	1%	10%	75%

Disposition ★★★★★

Act BW 90
Adj SC

Genetic Code & Indexes Terminal / Fertility followed by ranking within breed.

IBBA Expected Progeny Differences: EPD / EPD Accuracy / EPD % Ranking within breed

Disposition Score: Followed by Actual Birth Weight and Adjusted Scrotal. See bottom of page for description and scoring table.

DISPOSITION SCORING

A disposition score has been included for every bull selling. 5 stars being the best and 1 being the worst. Please note the explanation of our scoring system below and contact us with any questions you may have.

DISPOSITION SCORING TABLE

- ★★★★★ Extremely gentle, difficult to get out of the way.
- ★★★★ Calm but moves away from you when you get close to them.
- ★★★ Calm but moves away from you sooner than a 4 (Larger Flight Zone).
- ★★ Nervous and moves away rapidly when you enter their flight zone.
- ★ Extremely nervous and/or aggressive temperament. Thrashes about when confined and may attach the scorer in the pen.*

*There are no one star ranking in this sale as they have been culled.



BRIGGS 6132L

20236749 • 6132L • 10/25/2023 • Horned



SR GENUINE 69/6

SR GENESIS 75/3
SR HOLLY T19 (ET)

SR 2/19

20190135

SR 13/5

URBANOSKY 2-46
SR 76/2

BRIGGS RANCHES

HARRIS FARMS 92/2

JP COUCH 306C
BRIGGS 052/6

MISS WF 6132

20167867

MISS WF 749

WF SIR MIKE 350
MISS WF FRANNY 409

Bal Idx
55%

C/C Idx
60%

Term Idx
50%

	BW	WW	YW	MILK	TM	SC	HCW	REA	MARB	FT
EPDs	0.8	14	25	1	12	0.27	5	0.13	-0.08	0.007
Acc	.11	.33	.21	.11	--	.03	.09	.18	.31	.35
%Rank	85%	35%	20%	40%	30%	90%	20%	20%	85%	85%

GROWTH AND FERTILTY

He is a son of SR 2/19. Who has risen to the top in Briggs herd. His paternal brother was lot 1 in our Fall sale. His dam MISS WF 6132 has a361 day calving interval on 6 head. He ranks in the top 40% in 6 EPD triats. ADJ WW 716, REA/CWT 1.17, ADJ SC 37

Disposition



Act BW

Adj SC
37.5



LOT 1 | Briggs 6132L



HARRIS 6108L

20236295 • 6108L • 11/30/2023 • Horned



KR 625/14

KR 606R/12
KR 374/06 2B

KR912/18

20183403

KR 384R/12 2YR

RED ANGUS
KR 783/08 4A

HARRIS FARMS

HARRIS FARMS 92/2

JP COUCH 306C
BRIGGS 052/6

MISS WF 6108

20161186

4C 7/31

4C OUTLAW 504
DOUBLE TT 14

Bal Idx
25%

C/C Idx
30%

Term Idx
20%

	BW	WW	YW	MILK	TM	SC	HCW	REA	MARB	FT
EPDs	0.6	17	26	1	13	0.43	2	0.12	0.12	-0.006
Acc	.23	.21	.16	.12	--	.04	.07	.15	.19	.19
%Rank	75%	25%	15%	40%	25%	35%	30%	20%	30%	20%

GROWTH

A son out of KR 912/18 X factor and out of MISS WF 6108 who is a half sister to lot 1 dam. He ranks in the top 35% in 12 EPD traits. ADJ SC 38.

Selling full possession 1/2 semen interest.

Disposition



Act BW

63
Adj SC
38.9



BRIGGS 1524L9 ET

20235715 • 1524L9 • 09/15/2023 • Scurred



AJH 126/0

CHAPS 372
DOUBLE E 8T39

B14

20140819

HEFTE RANCH 804

TG DEADWOOD 5-2
HEFTE RANCH 167

BRIGGS RANCHES

HARCO T956 (ET) T956

PCR AVALANCHE 95/5 (ET) 95/5
MISS WINROCK M253

HARRIS FARMS 1524

20155577

HARCO T190/5 (ET) T190/5

KR RICARDO 182/02
FIVE OAKS 62/0

Bal Idx
25%

C/C Idx
10%

Term Idx
50%

	BW	WW	YW	MILK	TM	SC	HCW	REA	MARB	FT
EPDs	1.1	8	6	9	16	0.12	-7	0.08	0.29	0.021
Acc	.21	.25	.24	.18	--	.12	.11	.26	.34	.36
%Rank	90%	60%	70%	1%	15%	40%	85%	35%	10%	>95%

GROWTH, FERTILTY AND CARCASS

He is a son of the great Hefte B14 who has generated over \$220,000 in progeny for Briggs. He is out of the great donor cow Haris 1524 who has also generated over \$150,000 in progeny for Briggs. If your looking for easy fleshing these B14 are the ones that can handle the droughts and rough environment. He ranks in the top 40% in 10 EPD traits. Top 1% in Milk. ADJ WW 825, YW ratio 115, REA ratio 117, ADJ REA 16.27, REA/CWT 1.29, ADJ IMF 4.85, ratio 111, ADJ SC 38

Disposition



Act BW

Adj SC
38.9



BRIGGS 525L5

20236721 • 525L5 • 10/20/2023 • Horned



BRIGGS BOOM 015/12

HARRIS FARMS 46/6
BRIGGS RANCH 062/7

BRIGGS 828E

20176209

BRIGGS 082/8

LENK JL5/34
HARCO T099/5 (ET) T099/5

BRIGGS RANCHES

LF CHUCKIE BOY X2

SHAKER'S SIERRA 10/4
LF HOLLY BERRY 97

627/14

20143504

BRIGGS 520/11

BRIGGS 120/5
BRIGGS 548/8

Bal Idx
40%

C/C Idx
50%

Term Idx
30%

	BW	WW	YW	MILK	TM	SC	HCW	REA	MARB	FT
EPDs	0.9	31	30	2	22	0.44	5	0.13	-0.06	0.017
Acc	.10	.36	.24	.15	--	.07	.11	.22	.34	.37
%Rank	85%	2%	10%	25%	2%	30%	20%	20%	75%	>95%

GROWTH

Performance and power is in the pudding. He goes back to Boom on the top side and Chuckie Boy on the bottom. He ranks in the top 30% in 8 EPD traits. Top 25% in Milk. ADJ WW 835, ratio 122, REA/CWT 1.14, ADJ SC 39

Disposition



Act BW

Adj SC
39.3



LOT 4 | Briggs 525L5



HARRIS 9146L

20236297 • 9146L • 11/15/2023 • Horned



HARCO T958 (ET) T958 PCR AVALANCHE 95/5 (ET) 95/5
MISS WINROCK M253

HARRIS 958 724F26

20188606 HARRIS FARMS T003/6 (ET) T003/6
SCC GRID MAKER 820
BROAD BAY FARM 724

HARRIS FARMS

KR 921/15 KR 110N/09 110/09 N6

DSR 9146

20196326 DOS BROS 306/7
CA/DB COCHISE 3328
DB 231/4

Bal Idx
1%
C/C Idx
2%
Term Idx
1%

	BW	WW	YW	MILK	TM	SC	HCW	REA	MARB	FT
EPDs	1.6	47	54	6	34	0.42	17	0.3	0.27	-0.016
Acc	.31	.34	.16	.11	--	.06	.09	.20	.33	.35
%Rank	>95%	1%	1%	4%	1%	40%	1%	2%	10%	10%

GROWTH AND FERTILITY

He is a Harris 724F26 son and out of DSR 9146 who has a 371 day cawling interval on 3 head. He ranks in the top 10% in 11 EPD traits. ADJ WW 694, ratio 122, REA/CWT 1.12, ADJ SC 41.

Selling full possession 1/2 semen interest.

Disposition

★★★★

Act BW
78
Adj SC
41.3



LOT 5 | Harris 9146L



HARRIS 572L

20236278 • 572L • 10/13/2023 • Horned



HARCO T958 (ET) T958 PCR AVALANCHE 95/5 (ET) 95/5
MISS WINROCK M253

HARRIS 958 724F26

20188606 HARRIS FARMS T003/6 (ET) T003/6
SCC GRID MAKER 820
BROAD BAY FARM 724

HARRIS FARMS

HARRIS GUNS UP 216/5 HINNANT-FULBRIGHT 9/153
FC PISTOL 28/0

HARRIS GUNS UP 572F

20185701 CA 572
SYNERGY 0170
CB 9386

Bal Idx
1%
C/C Idx
1%
Term Idx
4%

	BW	WW	YW	MILK	TM	SC	HCW	REA	MARB	FT
EPDs	0.4	42	45	10	35	0.39	14	0.26	0.03	0.013
Acc	.34	.34	.22	.13	--	.06	.10	.20	.32	.34
%Rank	70%	1%	1%	1%	1%	50%	2%	3%	45%	85%

GROWTH AND MILK

Another son of Harris 724F26 . He ranks in the top 4% in 9 EPD traits. Top 1% Milk, ADJ WW 688, ratio 121. You want big weaning weight you have to have milk with it. ADJ SC 32.

Disposition

★★★★★

Act BW
74
Adj SC
32.2



BRIGGS 10814

20235642 • 10814 • 10/01/2023 • Polled



KR651/18(CHOSEN ONE) KR1195/15
DSR CHERRY 923 1B

HARRIS CHOSEN ONE 5H

20205955 HARRIS PERFECTO 5E HARRIS PERFECTO 215/5
NAF LIGHTNING 5N7

BRIGGS RANCHES

BRIGGS 605/8 BRIGGS 089/8

BRIGGS 108E2

20172333 628/14
BRIGGS 562/8
BRIGGS 508/11

Bal Idx
15%
C/C Idx
10%
Term Idx
25%

	BW	WW	YW	MILK	TM	SC	HCW	REA	MARB	FT
EPDs	-0.8	25	20	9	25	0.44	0	0.01	0	-0.002
Acc	.12	.33	.20	.12	--	.06	.10	.19	.30	.33
%Rank	20%	10%	30%	1%	1%	30%	40%	55%	55%	60%

GROWTH AND MILK

He is out of a Chosen One son. He ranks in the top 30% in 9 EPD traits. Top 1% Milk, 20% BW. ADJ WW 782 ratio 116, ADJ SC 33

Disposition

★★★★

Act BW
33.7



HARRIS 724L19 ET

20236289 • 724L19 • 10/21/2023 • Horned



KR1195/15 KR 545/12
KR 245/10 F1

KR651/18(CHOSEN ONE)

20183702 DSR CHERRY 923 1B
DS PHOENIX 611
DEAN-HARRIS 022/4 (ET) 022/4

HARRIS FARMS

FC PISTOL 28/0 HOLLY 20/3
GUNSlinger 13/5

HARRIS 80/4

20145296 HARRIS FARMS T003/6 (ET) T003/6
SCC GRID MAKER 820
BROAD BAY FARM 724

Bal Idx
20%
C/C Idx
20%
Term Idx
25%

	BW	WW	YW	MILK	TM	SC	HCW	REA	MARB	FT
EPDs	1.1	27	30	7	24	0.53	5	0.12	0.04	0.005
Acc	.24	.26	.29	.17	--	.14	.13	.27	.36	.38
%Rank	90%	5%	10%	2%	1%	15%	20%	20%	45%	85%

GROWTH AND MILK

A Chosen One son who ranks in the top 35% in 11 EPD traits. Top 2% Milk. REA/CWT 1.24

Disposition

★★★★★

Act BW
75
Adj SC
32.4



HARRIS 003L3

20236229 • 003L3 • 09/27/2023 • Horned



HARCO T958 (ET) T958 PCR AVALANCHE 95/5 (ET) 95/5
MISS WINROCK M253

HARRIS 958 724F26

20188606 HARRIS FARMS T003/6 (ET) T003/6
SCC GRID MAKER 820
BROAD BAY FARM 724

HARRIS FARMS

HARRIS PERFECTO 215/5 HARCO 1233
BROWN PRIDE Y7133

HARRIS 003F

20189626 MULTIPLE DAM
MULTIPLE SIRE
MULTIPLE DAM

Bal Idx
4%
C/C Idx
4%
Term Idx
10%

	BW	WW	YW	MILK	TM	SC	HCW	REA	MARB	FT
EPDs	0.6	31	35	4	23	0.48	9	0.24	0.12	0
Acc	.24	.16	.12	.07	--	.06	.05	.11	.14	.15
%Rank	75%	2%	5%	10%	2%	25%	10%	4%	30%	60%

GROWTH AND MILK

A Harris 724F26 son. He is 1/2 Red Angus who ranks in the top 30% in 12 EPD traits. Top 10% Milk, ADJ WW 735, REA/CWT 1.19, ADJ SC 34

Disposition

★★★★★

Act BW
73
Adj SC
34.5



HARRIS 153L19 ET

20236258 • 153L19 • 10/18/2023 • Horned



KR651/18(CHOSEN ONE)

KR1195/15
DSR CHERRY 923 1B

QVF MAVERICK 82H10

20200392
HARRIS 82/4

FC PISTOL 28/0
CSC 7-7

HARRIS FARMS

SANTA GERTRUDIS MS

SANTA GERTRUDIS MS
SANTA GERTRUDIS MD

HINNANT-FULBRIGHT 9/153

20090017
RED ANGUS

RED ANGUS
RED ANGUS

Bal Idx
20%

C/C Idx
40%

Term Idx
10%

	BW	WW	YW	MILK	TM	SC	HCW	REA	MARB	FT
EPDs	-0.9	14	16	-2	9	0.46	4	0.17	0.32	-0.012
Acc	.22	.22	.25	.12	--	.07	.09	.22	.34	.37
%Rank	20%	35%	40%	75%	50%	25%	20%	15%	5%	20%

BIRTHWEIGHT

He is a son of QVF MAVERICK 82H10 and out of the great donor cow HINNANT-FULBRIGHT 9/153, who is still in production at 15 years of age. He is 3/4 Santa Gertrudis, 1/4 Red Angus. He ranks in the top 35% in 9 EPD traits. Top 20% BW. REA/CWT 1.21

Disposition



Act BW
75
Adj SC
34.3



BRIGGS 253L10

20236703 • 253L10 • 10/25/2023 • Horned



BRIGGS 730/14

BRIGGS 111/5
BRIGGS 5060

BRIGGS 596F

20187578
BRIGGS 596D

777 411 VEGAS
BRIGGS757/13

BRIGGS RANCHES

ROBERTO BRIGGS 072/13

BRIGGS 580/0
BRIGGS 092/10

BRIGGS 253E4

20176104
HARRIS FARMS 29/3

QT CINNAMON BRAZOS 10/3
HARCO T817 (ET) T817

Bal Idx
75%

C/C Idx
>95%

Term Idx
40%

	BW	WW	YW	MILK	TM	SC	HCW	REA	MARB	FT
EPDs	0.3	7	8	-2	5	0.34	-6	-0.08	0.19	-0.028
Acc	.09	.34	.21	.11	--	.06	.10	.19	.32	.36
%Rank	65%	65%	65%	75%	75%	65%	80%	95%	20%	3%

GROWTH AND CARCASS

Going back to Vegas and Roberto in his pedigree. He ranks in the top 20% Marbling. ADJ WW 958, IMF ratio 132, REA/CWT 1.21, ADJ SC 33

Disposition



Act BW
33.6



SJ MR MAVERICK 88L3

20235825 • 88L3 • 12/04/2023 • Horned



KR651/18(CHOSEN ONE)

KR1195/15
DSR CHERRY 923 1B

QVF MAVERICK 82H10

20200392
HARRIS 82/4

FC PISTOL 28/0
CSC 7-7

SAN JOSE CATTLE CO

HARRIS BUFFALO BILL 066F3

RED DOC EL REY 3424
HARRIS 066C2

SJ LADY 128

20216371
TF 922

PISTOLERO
5-E DAISEY

Bal Idx
5%

C/C Idx
10%

Term Idx
10%

	BW	WW	YW	MILK	TM	SC	HCW	REA	MARB	FT
EPDs	1.8	37	43	3	25	0.46	10	0.23	0.1	-0.009
Acc	.27	.28	.15	.06	--	.06	.07	.14	.16	.16
%Rank	>95%	1%	2%	20%	1%	25%	5%	5%	30%	20%

GROWTH AND MILK

A son of QVF MAVERICK 82H10 and out of a first calf heifer SJ LADY 128. He ranks in the top 30% in 13 EPD traits. Top 20% Milk, ADJ WW 603, ratio 113, REA/CWT 1.23 ADJ SC 32

Disposition



Act BW
74
Adj SC
32.9



HARRIS 9047L

20236293 • 907L • 10/10/2023 • Horned



KR 625/14

KR 606R/12
KR 374/06 2B

KR912/18

20183403
KR 384R/12 2YR

RED ANGUS
KR 783/08 4A

HARRIS FARMS

KR395/18

KR 1255R/14
KR 62/09 2A

MS HARRIS TRIFECTA 907J

20216109
SCHUSTER T907/1 ET

KR 921/15
RED DOC 5183

Bal Idx
15%

C/C Idx
30%

Term Idx
10%

	BW	WW	YW	MILK	TM	SC	HCW	REA	MARB	FT
EPDs	-0.1	15	33	0	12	0.69	10	0.25	0.19	0.003
Acc	.32	.32	.19	.07	--	.05	.10	.21	.32	.35
%Rank	50%	30%	10%	50%	30%	2%	5%	4%	20%	60%

GROWTH

A X Factor KR 912/18 son, and out of a first calf heifer MS HARRIS TRIFECTA 907J. He ranks in the top 30% in 11 EPD traits. ADJ WW 618, REA/CWT 1.22. ADJ SC 37

Disposition



Act BW
76
Adj SC
37.9



HARRIS 153L20 ET

20236259 • 153L20 • 10/26/2023 • Horned



KR651/18(CHOSEN ONE)

KR1195/15
DSR CHERRY 923 1B

QVF MAVERICK 82H10

20200392
HARRIS 82/4

FC PISTOL 28/0
CSC 7-7

HARRIS FARMS

SANTA GERTRUDIS MS

SANTA GERTRUDIS MS
SANTA GERTRUDIS MD

HINNANT-FULBRIGHT 9/153

20090017
RED ANGUS

RED ANGUS
RED ANGUS

Bal Idx
15%

C/C Idx
40%

Term Idx
10%

	BW	WW	YW	MILK	TM	SC	HCW	REA	MARB	FT
EPDs	-0.9	15	17	-2	10	0.46	5	0.22	0.38	0.003
Acc	.22	.22	.25	.12	--	.07	.09	.22	.34	.37
%Rank	20%	30%	40%	75%	40%	25%	20%	10%	3%	60%

GROWTH AND CARCASS

He is a son of QVF MAVERICK 82H10 and out of the great donor cow HINNANT-FULBRIGHT 9/153, who is still in production at 15 years of age. He is 3/4 Santa Gertrudis, 1/4 Red Angus. He rank in the top 30% in 8 EPD traits. Top 20% BW. REA ratio 110. REA/CWT 1.25, ADJ SC 32

Disposition



Act BW
80
Adj SC
32.6



BRIGGS 1524L5 ET

20235713 • 1524L5 • 09/20/2023 • Polled



AJH 126/0

CHAPS 372
DOUBLE E 8T39

B14

20140819
HEFTE RANCH 804

TG DEADWOOD 5-2
HEFTE RANCH 167

BRIGGS RANCHES

HARCO T956 (ET) T956

PCR AVALANCHE 95/5 (ET) 95/5
MISS WINROCK M253

HARRIS FARMS 1524

20155577
HARCO T190/5 (ET) T190/5

KR RICARDO 182/02
FIVE OAKS 62/0

Bal Idx
50%

C/C Idx
15%

Term Idx
90%

	BW	WW	YW	MILK	TM	SC	HCW	REA	MARB	FT
EPDs	1.1	4	-2	9	14	0.41	-16	-0.18	0.16	0.024
Acc	.21	.25	.24	.18	--	.12	.11	.26	.34	.36
%Rank	90%	80%	90%	1%	20%	40%	>95%	>95%	20%	>95%

MILK

He is a son of the great Hefte B14 who has generated over \$220,000 in progeny for Briggs. He is out of the great donor cow Harris 1524 who has also generated over \$150,000 in progeny for Briggs. If you're looking for easy fleshing these B14 are the ones that can handle the droughts and rough environment. He ranks in the top 20% in 6 EPD traits. ADJ WW 650, REA/CWT 1.23, ADJ SC 34

Disposition



Act BW
34.3



BRIGGS 164L3

20236698 • 164L3 • 10/10/2023 • Horned



SR GENUINE 69/6

SR GENESIS 75/3
SR HOLLY T19 (ET)

SR 2/19

20190135

SR 13/5

URBANOSKY 2-46
SR 76/2

BRIGGS RANCHES

BRIGGS 636/9

BRIGGS 564/5
BRIGGS 527/5

BRIGGS 7752C

20154582

BRIGGS 507/11

BRIGGS 129/8
BRIGGS 155/8 (ET) 155/8

	BW	WW	YW	MILK	TM	SC	HCW	REA	MARB	FT
EPDs	1	6	22	-2	5	0.5	4	0.06	-0.09	-0.024
Acc	.09	.35	.21	.12	--	.04	.10	.19	.31	.34
%Rank	90%	70%	25%	75%	75%	20%	20%	40%	85%	10%

GROWTH

He is a son of SR 2/19 and out of BRIGGS 7752C who has a 396 day calving interval on 7 head!! He ranks in the top 40% in 6 EPD traits. ADJ WW 682, ADJ SC 36

Disposition



Act BW

Adj SC
36.9



BA POSTIE 0115L

20236603 • 0115L • 09/07/2023 • Horned



SJ MR 723

KR 301/15
1632

HARRIS 966J

20216111

MISS GRANDVIEW 966

BRIGGS 1181C3
MISS GRANDVIEW 047

J&L CATTLE CO

BA NITRO 025/0 ET T025/0

DENOMINATOR 147/6
NAVIDAD RANCH NR607

BA BLONDIE

20153269

MUEGGE MISS MIA (ET)

HATCHET 150
MUEGGE MISS MARIA 596

	BW	WW	YW	MILK	TM	SC	HCW	REA	MARB	FT
EPDs	0	9	8	2	10	0.23	-4	0.04	0	0.002
Acc	.12	.10	.07	.07	--	.04	.03	.07	.08	.08
%Rank	50%	55%	65%	25%	40%	95%	65%	45%	55%	60%

MILK

Moderate and thick and ranks in the top 25% in Milk, ADJ WW 604, ADJ IMF 5.13, ADJ SC 38

Disposition



Act BW

68
Adj SC
38.6



HARRIS 37L

20236240 • 37L • 11/24/2023 • Horned



HARCO T958 (ET) T958

PCR AVALANCHE 95/5 (ET) 95/5
MISS WINROCK M253

HARRIS 958 724F26

20188606

HARRIS FARMS T003/6 (ET) T003/6

SCC GRID MAKER 820
BROAD BAY FARM 724

HARRIS FARMS

KR 1269/14 GALAN

KR 97/10
KR 131/04 F2

HEFTE RANCH E37

20167863

LCR 526

BRIGGS 533/11
2S RANCH 5131

	BW	WW	YW	MILK	TM	SC	HCW	REA	MARB	FT
EPDs	2	52	53	5	35	0.39	15	0.29	0.03	-0.003
Acc	.33	.30	.14	.12	--	.05	.08	.17	.27	.29
%Rank	>95%	1%	1%	10%	1%	50%	1%	2%	45%	60%

GROWTH AND MILK

A son of Harris 74F26 and out of HEFTE RANCH E37 who has a 351 day calving interval on 2 head. He ranks in the top 20% in 10 EPD traits. Top 10% Milk. ADJ WW 765, ratio 121, REA ratio 115, REA/CWT 1.19, ADJ SC 34

Disposition



Act BW

77
Adj SC
34.6

SIGHT UNSEEN PURCHASE OPTION

If you are unable to attend the auction in person or watch DVAuctions internet broadcast, simply contact the marketing team:

- Describe your selection criteria and the type of bull(s) and/or female(s) you wish to purchase and your price range.
- You pay only the bid price, just as if you were bidding in person.
- We will call after the sale to confirm your purchase and you can confirm your payment method and arrange shipping.
- You decide if the animal meets your criteria upon delivery. If you are not happy with your purchase, you don't own it.



MIDNIGHT TRAIN

B R I G G S 4 6 8 L 7



19 **MIDNIGHT TRAIN BRIGGS 468L7** **GGP**
 UB10543239 • 468L7 • P • GEN: UB2 • 9/17/2023 • E

SUHN'S TRAIL BOSS 30B3 SUHN'S AUGUSTUS 416Y14
 SUHN'S MISS PATTON 30X5

CB MASTERPIECE 2051F
 UB10383790 A CROSS RITA A2051

BRIGGS RANCHES
 CONNEALY CONSENSUS 7229
 J & J OT26 RITA 48T
 MC BOULDER 889Z14

BRIGGS NEVER SURRENDER 468J3
 R10505029 MS SALACOA LEGACY 468D41
 MS BRINKS BS 607L11 468S78

NEVER SURRENDER OF SALACOA 803D9 MS BRINKS LOMBARDI 803S25
 LEGACY 302A4

Gen. Code
 Term Idx
 3.95
 10%
 Fert Idx
 4.63
 25%

	CED	BW	WW	YW	MILK	SC	REA	IMF	HPreg	STAY	MCW
EPDs	6	0	36	67	4	2.2	0.73	0.39	9.06	3.5	5.81
Acc	.33	.41	.40	.38	.25	.42	.42	.50	.21	.10	.21
%Rank	40%	45%	15%	10%	90%	1%	3%	15%	4%	10%	85%

POWER, GROWTH AND CARCASS

MIDNIGHT TRAIN BRIGGS 468L7 is one of the most balanced and functional bulls we have ever raised. With

his thickness, big bone and clean sheath. You can run the wheels off a truck trying find a bull of this caliber. He is a Masterpiece son out of BRIGGS NEVER SURRENDER 468J3 one of our top donors. Out of the great donor cow MS SALACOA LEGACY 468D41 who has done over \$40,000 in progeny and now resides at Branch Ranch. He ranks in the top 30% in 12 EPD traits. Top 3% REA, 15% IMF. He had an ADJ 15.19 REA, ADJ WW 894, ADJ IMF 4.62.

Selling full possession 1/2 semen interest.



Lot 19 Maternal Granddam | Ms Salacoa Legacy 468D41

Disposition

★★★★★
 Act BW
 75
 Adj SC
 42.31

GRID IRON

B R I G G S 5 4 1 L 1 4



20

GRID IRON BRIGGS 541L14

UB10543246 • 541L14 • P • GEN: UB2 • 9/9/2023 • E

SUHN'S TRAIL BOSS 30B3	SUHN'S AUGUSTUS 416Y14	Gen. Code
	SUHN'S MISS PATTON 30X5	
CB MASTERPIECE 2051F		Term Idx
UB10383790	CONNEALY CONSENSUS 7229	
A CROSS RITA A2051	J & J OT26 RITA 48T	4.33
BRIGGS RANCHES	MC BOULDER 889Z14	4%
	NEVER SURRENDER OF SALACOA 803D9 MS BRINKS LOMBARDI 803S25	Fert Idx
BRIGGS NEVER SURRENDER 541J3		
R10505028	ATLANTA OF SALACOA 488Z	4.57
OAKS MS ATLANTA 541C53	OAKS MS CSONKA 541T7	25%



Lot 20 Maternal Granddam | Oaks Ms Atlanta 541C53

	CED	BW	WW	YW	MILK	SC	REA	IMF	HPreg	STAY	MCW
EPDs	6.9	-0.5	41	72	3	2	0.96	0.36	8.04	3.13	3.73
Acc	.33	.41	.40	.38	.25	.42	.42	.50	.21	.10	.21
%Rank	30%	35%	10%	10%	95%	1%	1%	15%	10%	15%	75%

POWER, GROWTH AND CARCASS

GRID IRON BRIGGS 541L14 a Masterpiece son out of BRIGGS NEVER SURRENDER 541J3. Her full sister Briggs 541K6 sold at Cavenders Ranches in 2023 for \$8,000 to Double Duece Ranch. A full sister also sold at Salacoa Valley in 2021 Briggs 541H for \$15,000 to Wiley Ranch. Their granddam OAKS MS ATLANTA 541C53 has generated over \$90,000 in progeny. He has all the power, depth, bone, he has it all. He is a 3/4 sib to the previous lot and just as good. We had a hard time determining which bull we would start with as they are different in there make but super powerful. He had a ADJ WW 812, ADJ REA 15.38, ADJ IMF 4.67 had a 1.18 REA/CWT. Ranks in the top 35% in 14 EPD traits.

Disposition
★★★★★
Act BW 70
Adj SC 39.98

Selling full possession 1/2 semen interest.

21 HARRIS GULF COAST 535L2
R10557506 • 535L2 • P • GEN: 2 • 10/18/2023 • E

NEVER SURRENDER OF SALACOA 803D9
MC BOULDER 889Z14
MS BRINKS LOMBARDI 803S25
Gen. Code

BRIGGS GULF COAST 23F5
R10398073
MS SALACOA NEW ERA 23Z51
NEW ERA OF BRINKS 541J37
SALACOA PINE LASS 23P2
Term Idx
3.91
10%

HARRIS FARMS
BWCC MONUMENT 10D7
MC BOULDER 889Z14
BWCC MS RESOURCE 10A10
Fert Idx
4.55
25%

MS DMR MONUMENT 535J57
R10497229
MS DMR EMPIRE 535G49
DMR EMPIRE 795D12
MS DMR CORONADO 535A8

	CED	BW	WW	YW	MILK	SC	REA	IMF	HPreg	STAY	MCW
EPDs	5.7	0.4	32	66	6	1.59	0.75	0.39	5.89	2.85	-0.59
Acc	.31	.40	.39	.37	.23	.40	.42	.50	.18	.10	.21
%Rank	45%	55%	20%	10%	75%	2%	2%	15%	25%	20%	50%

Disposition
★★★★
Act BW
77
Adj SC
39.58

MODERATE, CARCASS
A Briggs Gulf Coast 23F5 son out of MS DMR MONUMENT 535J57 a donor we purchased from Draggin M in 2022. His maternal sister just sold this Fall for \$16,000 to GKB. He ranks in the top 35% in 11 EPD traits. ADJ WW 689, ADJ IMF 4.83.

22 BRIGGS MASTERPEICE 541L11
UB10543251 • 541L11 • P • GEN: UB2 • 9/10/2023 • E

SUHN'S TRAIL BOSS 30B3
SUHN'S AUGUSTUS 416Y14
SUHN'S MISS PATTON 30X5
Gen. Code

CB MASTERPEICE 2051F
UB10383790
A CROSS RITA A2051
CONNEALY CONSENSUS 7229
J & J OT26 RITA 48T
Term Idx
4.22
5%

BRIGGS RANCHES
NEVER SURRENDER OF SALACOA 803D9 MS BRINKS LOMBARDI 803S25
Fert Idx
4.35
35%

BRIGGS NEVER SURRENDER 541J3
R10505028
OAKS MS ATLANTA 541C53
ATLANTA OF SALACOA 488Z
OAKS MS CSONKA 541T77

	CED	BW	WW	YW	MILK	SC	REA	IMF	HPreg	STAY	MCW
EPDs	6.9	-0.4	41	72	3	1.74	0.83	0.35	8.04	3.13	3.73
Acc	.33	.41	.40	.38	.25	.42	.42	.50	.21	.10	.21
%Rank	30%	35%	10%	10%	95%	1%	1%	15%	10%	15%	75%

Disposition
★★★★
Act BW

Adj SC
38.02

BIRTHWEIGHT, GROWTH, CARCASS
A Masterpiece son. A full brother to Lot 20 that ranks in the top 35% in 14 EPD traits. ADJ WW 788, ADJ REA 14.92, ADJ IMF 4.14.

23 BRIGGS MASTERPEICE 468L5
UB10543234 • 468L5 • P • GEN: UB2 • 9/3/2023 • E

SUHN'S TRAIL BOSS 30B3
SUHN'S AUGUSTUS 416Y14
SUHN'S MISS PATTON 30X5
Gen. Code

CB MASTERPEICE 2051F
UB10383790
A CROSS RITA A2051
CONNEALY CONSENSUS 7229
J & J OT26 RITA 48T
Term Idx
3.69
10%

BRIGGS RANCHES
NEVER SURRENDER OF SALACOA 803D9 MS BRINKS LOMBARDI 803S25
Fert Idx
4.77
20%

BRIGGS NEVER SURRENDER 468J3
R10505029
MS SALACOA LEGACY 468D41
LEGACY 302A4
MS BRINKS BS 607L11 468S78

	CED	BW	WW	YW	MILK	SC	REA	IMF	HPreg	STAY	MCW
EPDs	6.2	0	36	66	4	0.87	0.62	0.31	9.06	3.5	5.81
Acc	.33	.41	.40	.38	.25	.42	.42	.50	.21	.10	.21
%Rank	35%	45%	15%	10%	90%	20%	10%	20%	4%	10%	85%

Disposition
★★★★
Act BW
65
Adj SC
31.74

BIRTHWEIGHT, GROWTH, CARCASS
Another Masterpiece son. A Full brother to lot 19. He ranks in the top 35% in 13 EPD traits. ADJ BW 65, ADJ WW, 682, REA/CWT 1.21

24 BRIGGS MASTERPEICE 468L6
UB10543247 • 468L6 • P • GEN: UB2 • 9/8/2023 • E

SUHN'S TRAIL BOSS 30B3
SUHN'S AUGUSTUS 416Y14
SUHN'S MISS PATTON 30X5
Gen. Code

CB MASTERPEICE 2051F
UB10383790
A CROSS RITA A2051
CONNEALY CONSENSUS 7229
J & J OT26 RITA 48T
Term Idx
3.34
15%

BRIGGS RANCHES
NEVER SURRENDER OF SALACOA 803D9 MS BRINKS LOMBARDI 803S25
Fert Idx
4.9
20%

BRIGGS NEVER SURRENDER 468J3
R10505029
MS SALACOA LEGACY 468D41
LEGACY 302A4
MS BRINKS BS 607L11 468S78

	CED	BW	WW	YW	MILK	SC	REA	IMF	HPreg	STAY	MCW
EPDs	6.2	0	35	61	4	1.41	0.56	0.25	9.06	3.5	5.81
Acc	.33	.41	.40	.38	.25	.41	.42	.50	.21	.10	.21
%Rank	35%	45%	15%	15%	90%	4%	10%	25%	4%	10%	85%

Disposition
★★★★
Act BW
65
Adj SC
35.94

BIRTHWEIGHT, GROWTH, CARCASS
A Masterpiece son. If you want calving ease bulls you have to try these Masterpiece sons. You can sleep easy at night and wont have to worry. He ranks in the top 35% in 13 EPD traits. ADJ BW 65, ADJ WW 678, REA/CWT 1.17

25 BRIGGS 596L
R10543173 • 596L • P • GEN: 1 • 10/18/2023 • N

DMR CASH FLOW 535F30
S A V RESOURCE 1441
MS DMR CORONADO 535A8
Gen. Code
CAF DDF

JM CASH FLOW 23J52
UB10478239
CLVR MISS IRIS 23Y1
SVF GARRETT 274 U229
SVF MS 23S101
Term Idx
2.74
25%

BRIGGS RANCHES
SALACOA STONEWALL 535E30
MC BOULDER 889Z14
STONEMALL OF RRR 222W6
MS SALACOA ATLANTA 535C20
Fert Idx
3.72
55%

BRIGGS 596H
R10452468
CX MS BLACK DIAMOND 596F
CX MR BLACK DIAMOND 36/U
MS. BRINKS TRACKER 596U2

	CED	BW	WW	YW	MILK	SC	REA	IMF	HPreg	STAY	MCW
EPDs	3.3	1	31	58	7	0.29	0.52	0.11	2.69	1.98	-9.94
Acc	.34	.38	.43	.33	.23	.38	.39	.48	.14	.09	.20
%Rank	80%	75%	20%	20%	70%	75%	15%	45%	60%	50%	15%

Disposition
★★★★
Act BW

Adj SC
34.48

GROWTH
He is out of a Cashflow son that ranks in the top 30% in 6 EPD traits. ADJ WW 677 a ratio of 115, REA/CWT 1.22. If your looking to add pounds at weaning this bull will put money in your pocket.

26 BRIGGS 541L4
R10543185 • 541L4 • P • GEN: 1 • 10/1/2023 • N

CB GROWTH FUND 2051G11
CB CAPITAL GAIN 924D19
A CROSS RITA A2051
Gen. Code
DDF

DMR GROWTH FUND 415J96
UB10489777
MS DMR CORONADO 415A7
TJM CORONADO 535X
MS BRINKS BRIGHT SIDE 415R23
Term Idx
2.73
25%

BRIGGS RANCHES
NEVER SURRENDER OF SALACOA 803D9 MS BRINKS LOMBARDI 803S25
Fert Idx
4.41
30%

BRIGGS NEVER SURRENDER 541J3
R10505028
OAKS MS ATLANTA 541C53
ATLANTA OF SALACOA 488Z
OAKS MS CSONKA 541T77

	CED	BW	WW	YW	MILK	SC	REA	IMF	HPreg	STAY	MCW
EPDs	6.9	-0.5	31	58	7	0.78	0.46	0.03	7.25	2.61	-1.66
Acc	.33	.38	.42	.35	.23	.40	.40	.48	.17	.10	.21
%Rank	30%	35%	20%	20%	70%	25%	20%	65%	15%	30%	45%

Disposition
★★★★
Act BW

Adj SC
35.88

BIRTHWEIGHT AND GROWTH
Its pretty impressive when a donor cow has her ET calves in the sale line up and here we have her Natural Service calf and did I mention he is out of a first calf heifer!!! Talk about Fertile!! He is out of a son of Growth Fund and ranks in the top 35% in 11 EPD traits. ADJ WW 631, REA/CWT 1.23



HARRIS 535L5

R10556904 • 535L5 • P • GEN: 5 • 11/29/2023 • N

TJM THREE D 302A CB FINAL CUT 924X
OAKS MS PATTON 302X3

5K THREE D 392E5

R10351989 KEMPS MS 5K ABRAMS 392Z MC ABRAMS 468T22
KEMPS MS PAT BEST BET 392W13

HARRIS FARMS

MC BOULDER 889Z14

NEVER SURRENDER OF SALACOA 803D9 MS BRINKS LOMBARDI 803S25

HARRIS NEVER SURRENDER 535G2

R10433828 MS SVF 23S86 535X20 SVF MR CADENCE 23S86
SVF MS 535P20

	CED	BW	WW	YW	MILK	SC	REA	IMF	HPreg	STAY	MCW
EPDs	6.4	-0.8	35	60	7	0.32	0.51	0.09	7.31	3.33	-0.16
Acc	.20	.25	.24	.13	.12	.12	.13	.16	.08	.06	-.03
%Rank	35%	25%	15%	20%	70%	70%	15%	50%	15%	10%	55%

BIRTHWEIGHT,GROWTH,FERTILITY

He goes back to Never Surrender and Three D. He ranks in the top 35% in 13 EPD traits.ADJ BW 68, ADJ WW 659 REA/CWT 1.19. His dam, Harris 535G2 has a 386 day calving interval on 3 head

Disposition

★★★★

Act BW

68

Adj SC

38.9



BRIGGS 75L6

UB10543172 • 75L6 • P • GEN: UB2 • 11/1/2023 • N

DMR CASH FLOW 535F30 S A V RESOURCE 1441
MS DMR CORONADO 535A8

JM CASH FLOW 23J52

UB10478239 CLVR MISS IRIS 23Y1 SVF GARRETT 274 U229
SVF MS 23S101

BRIGGS RANCHES

SF MACK 535E8 MCKELLAR CONSENSUS 7229
SF MISS NEXT STEP 535X3

CB MS 535E8 MACK 75H28

UB10459558 CB MS BRICKHOUSE 75F36 SF BRICKHOUSE 909D9
CB MS BENCHMARK 75D29

	CED	BW	WW	YW	MILK	SC	REA	IMF	HPreg	STAY	MCW
EPDs	2.1	0.8	33	68	8	0.77	0.58	0.32	5.16	2.97	1.19
Acc	.34	.39	.43	.33	.22	.38	.38	.47	.14	.08	.20
%Rank	90%	70%	20%	10%	60%	30%	10%	20%	30%	20%	65%

GROWTH, CARCASS, FERTILITY

He is out of a Cashflow son and out of CB MS 535E8 MACK 75H28 who has a 365 day calving interval on 2 head. He ranks in the top 30% in 12 EPD traits. ADJ IMF 4.55, REA/CWT 1.21.

Disposition

★★★★

Act BW

Adj SC

36.05



BRIGGS HANDSOME JACK 415L7

R10543236 • 415L7 • P • GEN: 2 • 9/7/2023 • E

DMR EMPIRE 795D12 TJM THREE D 302A
MS DMR JETHRO 795Y2

BRIGGS HANDSOME JACK 392J

R10487374 MS SALACOA KHAN 392C15 KHAN OF SALACOA 535Y22
MS SALACOA LTD 392Y18

BRIGGS RANCHES

BWCC BIG LAKE 111F4 BWCC CROSS FIT 541B28
BWCC MS ROCK SLIDIC 111C6

MS DMR BIG LAKE 415J122

R10492609 MS DMR THREE D 415E18 TJM THREE D 302A
MS DMR CORONADO 415A7

	CED	BW	WW	YW	MILK	SC	REA	IMF	HPreg	STAY	MCW
EPDs	6.2	-0.1	38	65	8	0.54	0.25	-0.01	9.42	3.33	2.7
Acc	.32	.40	.39	.36	.22	.41	.41	.49	.17	.09	.20
%Rank	35%	45%	10%	15%	60%	45%	45%	75%	4%	10%	70%

GROWTH AND FERTILITY

Here is one of the first Handsome Jack offspring being offered for sale. Handsome Jack 392J was the high selling bull in our Fall 2022 sale that sold to Johnston Brangus for \$23,000. He is out of one our top donors we purchased from Draggin M MS DMR BIG LAKE 415J122 who had a 352 day calving interval on 2 natural calves. He ranks in the top 35% in 10 EPD traits. ADJ WW 707

Disposition

★★★★

Act BW

85

Adj SC

34.9



BRIGGS 209L6

R10543187 • 209L6 • P • GEN: 1 • 9/15/2023 • N

CB GROWTH FUND 2051G11 CB CAPITAL GAIN 924D19
A CROSS RITA A2051

DMR GROWTH FUND 415J96

UB10489777 MS DMR CORONADO 415A7 TJM CORONADO 535X
MS BRINKS BRIGHT SIDE 415R23

BRIGGS RANCHES

NEVER SURRENDER OF SALACOA 803D9 MS BRINKS LOMBARDI 803S25

BRIGGS NEVER SURRENDER 209J8

R10505035 MS SALACOA ATLANTA 209B16 ATLANTA OF SALACOA 488Z
CCC MS. BS 789G5 209W22

	CED	BW	WW	YW	MILK	SC	REA	IMF	HPreg	STAY	MCW
EPDs	6.7	-0.2	38	76	9	0.15	0.48	0.1	7.95	2.56	-1.28
Acc	.33	.38	.42	.35	.23	.39	.40	.48	.17	.09	.21
%Rank	30%	40%	10%	4%	45%	85%	15%	45%	10%	30%	50%

GROWTH AND FERTILITY

He is out of a son of Growth Fund and out of a Never Surrender daughter BRIGGS NEVER SURRENDER 209J8 who has 386 day calving interval on 2 head. He ranks in the top 40% in 10 EPD traits. ADJ WW 655 with a ratio of 111. If your looking to add pounds at weaning this bull will put money in your pocket.

Disposition

★★★★

Act BW

Adj SC

33.23



HARRIS 392L2

R10556901 • 392L2 • P • GEN: 6 • 9/1/2023 • N

BRIGGS CORONADO 21/8 T3 CORONADO 222C4
MS SALACOA KHAN 392C15

BRIGGS 535H

R10452464 BRIGGS MS STRATEGY 535F2 DMR STRATEGY 263C6
MS SVF 23S86 535X20

HARRIS FARMS

SALACOA ATLANTA 535E3 MS SALACOA LTD 535C

MS HARRIS 535E3 392J

R10495253 HARRIS MAGNUM 392G3 CRC-IFCC MAGNUM 331T
SVF WARRIOR KING 392 W111

	CED	BW	WW	YW	MILK	SC	REA	IMF	HPreg	STAY	MCW
EPDs	6.2	-0.7	18	32	13	0.42	0.16	0.13	4.64	2.05	-12.1
Acc	.28	.37	.36	.28	.20	.30	.32	.40	.13	.08	.20
%Rank	35%	30%	60%	70%	15%	60%	60%	40%	35%	45%	10%

BIRTHWEIGHT AND MILK

He goes back to Coronado on the top side and Atlanta on the bottom side, calving easy at its best. He ranks in the top 35% in 8 EPD traits. Top 15% Milk. REA/CWT 1.19

Disposition

★★★★

Act BW

65

Adj SC

34.65



BRIGGS 31L2

R10543171 • 31L2 • P • GEN: 1 • 11/1/2023 • N

DMR CASH FLOW 535F30 S A V RESOURCE 1441
MS DMR CORONADO 535A8

JM CASH FLOW 23J52

UB10478239 CLVR MISS IRIS 23Y1 SVF GARRETT 274 U229
SVF MS 23S101

BRIGGS RANCHES

SALACOA BOULDER 541D10 MS SALACOA PATTON 541Z4

BRIGGS 541D9 BOULDER 31G

R10421764 MS SALACOA HOLLYWOOD 31E3. HOLLYWOOD OF SALACOA 23A53
MS SALACOA STONEWALL 31A7

	CED	BW	WW	YW	MILK	SC	REA	IMF	HPreg	STAY	MCW
EPDs	4.4	0.3	30	57	6	0.55	0.44	0.19	5.14	2.57	-8.57
Acc	.34	.38	.44	.34	.23	.39	.40	.48	.15	.09	.20
%Rank	65%	55%	25%	20%	75%	45%	20%	30%	30%	30%	20%

GROWTH

He is out of a Cashflow son Who ranks in the top 40% in 12 EPD traits. ADJ WW 630, REA/CWT 1.18

Disposition

★★★★

Act BW

Adj SC

35.75

33 BRIGGS 209L5

R10543186 • 209L5 • P • GEN: 1 • 10/15/2023 • N

CB GROWTH FUND 2051G11 CB CAPITAL GAIN 924D19
A CROSS RITA A2051

DMR GROWTH FUND 415J96
UB10489777 MS DMR CORONADO 415A7

TJM CORONADO 535X
MS BRINKS BRIGHT SIDE 415R23

TJM THREE D 302A
MS DMR JETHRO 795Y2

ATLANTA OF SALACOA 488Z
CCC MS. BS 789G5 209W22

Gen. Code
Term Idx 1.96
50%
Fert Idx 5.02
15%

CED	BW	WW	YW	MILK	SC	REA	IMF	HPreg	STAY	MCW
EPDs 7.6	-1.4	24	45	8	1.08	0.22	-0.03	9.23	2.9	-0.7
Acc .33	.38	.42	.35	.23	.39	.40	.48	.17	.10	.21
%Rank 20%	15%	40%	45%	60%	10%	50%	85%	4%	20%	50%

BIRTHWEIGHT AND FERTILITY
He is out of a Growth Fund son and out of a Empire daughter BRIGGS EMPIRE 209J5 who has a 353 day calving interval on 2 head. He ranks in the top 40% in 10 EPD traits. Top 15% BW. ADJ WW 601, REA/CWT 1.19

Disposition
★★★★★
Act BW
Adj SC 39.46

34 BRIGGS MASTERPIECE 468L4

UB10543241 • 468L4 • P • GEN: UB2 • 9/3/2023 • E

SUHN'S TRAIL BOSS 30B3 SUHN'S AUGUSTUS 416Y14
SUHN'S MISS PATTON 30X5

CB MASTERPIECE 2051F
UB10383790 A CROSS RITA A2051

CONNEALY CONSENSUS 7229
J & J OT26 RITA 48T

MC BOULDER 889Z14
NEVER SURRENDER OF SALACOA 803D9 MS BRINKS LOMBARDI 803S25

LEGACY 302A4
MS SALACOA LEGACY 468D41 MS BRINKS BS 607L11 468S78

Gen. Code
Term Idx 3.5
15%
Fert Idx 4.97
15%

CED	BW	WW	YW	MILK	SC	REA	IMF	HPreg	STAY	MCW
EPDs 6.5	0	36	65	4	1.26	0.62	0.23	9.06	3.5	5.81
Acc .33	.41	.40	.38	.25	.41	.42	.50	.21	.10	.21
%Rank 35%	45%	15%	15%	90%	10%	10%	25%	4%	10%	85%

BIRTHWEIGHT, GROWTH, CARCASS
He is a Masterpiece son and a full brother to lot 19. He ranks in the top 30% in 13 EPD traits. ADJ BW 45, ADJ WW 607, REA/CWT 1.22

Disposition
★★★★★
Act BW 45
Adj SC 34.74

35 BRIGGS HANDSOME JACK 415L9

R10543254 • 415L9 • P • GEN: 2 • 9/9/2023 • E

DMR EMPIRE 795D12 TJM THREE D 302A
MS DMR JETHRO 795Y2

BRIGGS HANDSOME JACK 392J
R10487374 MS SALACOA KHAN 392C15

KHAN OF SALACOA 535Y22
MS SALACOA LTD 392Y18

MS SALACOA KHAN 392C15 MS SALACOA LTD 392Y18
BWCC CROSS FIT 541B28

BWCC BIG LAKE 111F4 BWCC MS ROCK SOLID 111C6

MS DMR BIG LAKE 415J122
R10492609 MS DMR THREE D 415E18

TJM THREE D 302A
MS DMR CORONADO 415A7

Gen. Code
Term Idx 2.72
25%
Fert Idx 4.88
20%

CED	BW	WW	YW	MILK	SC	REA	IMF	HPreg	STAY	MCW
EPDs 6.3	-0.1	37	60	8	0.31	0.34	0.03	9.42	3.33	2.7
Acc .32	.40	.39	.36	.22	.40	.41	.49	.17	.09	.20
%Rank 35%	45%	10%	20%	60%	70%	35%	65%	4%	10%	70%

GROWTH AND BIRTHWEIGHT
Here is one of the first Handsome Jack offspring being offered for sale. Handsome Jack 392J was the high selling bull in our Fall 2022 sale that sold to Johnston Brangus for \$23,000. He is out of one our top donors we purchased from Draggin M MS DMR BIG LAKE 415J122 who had a 352 day calving interval on 2 natural calves. He ranks in the top 35% in 11 EPD traits. ADJ WW 612, REA/CWT 1.22

Disposition
★★★★★
Act BW 80
Adj SC 32.98

36 BRIGGS 75L5

R10543183 • 75L5 • P • GEN: 1 • 11/18/2023 • N

DMR CASH FLOW 535F30 S A V RESOURCE 1441
MS DMR CORONADO 535A8

JM CASH FLOW 23J52
UB10478239 CLVR MISS IRIS 23Y1

SVF GARRETT 274 U229
SVF MS 23S101

DMR EMPIRE 795D12 TJM THREE D 302A
MS DMR JETHRO 795Y2

BRIGGS 75H
R10452503 MB MS CAHILL 75A7

MB CAHILL 541T14
MB MS REVELATION 75W

Gen. Code
Term Idx 2.45
35%
Fert Idx 4.01
45%

CED	BW	WW	YW	MILK	SC	REA	IMF	HPreg	STAY	MCW
EPDs 3	0.7	25	46	6	0.84	0.48	0.2	4.7	2.47	2.16
Acc .34	.39	.44	.34	.23	.39	.40	.48	.16	.09	.20
%Rank 80%	65%	40%	40%	75%	25%	15%	30%	35%	30%	70%

GROWTH AND CARCASS
out of a son of Cash Flow and out of a Empire daughter. He ranks in the top 40% in 10 EPD traits. REA/CWT 1.38, ADJ IMF4.60, ratio 120

Disposition
★★★★★
Act BW
Adj SC 37.75

37 HARRIS HANDSOME JACK 415L6

R10557505 • 415L6 • P • GEN: 2 • 10/11/2023 • E

DMR EMPIRE 795D12 TJM THREE D 302A
MS DMR JETHRO 795Y2

BRIGGS HANDSOME JACK 392J
R10487374 MS SALACOA KHAN 392C15

KHAN OF SALACOA 535Y22
MS SALACOA LTD 392Y18

MS SALACOA KHAN 392C15 MS SALACOA LTD 392Y18
BWCC CROSS FIT 541B28

BWCC BIG LAKE 111F4 BWCC MS ROCK SOLID 111C6

MS DMR BIG LAKE 415J122
R10492609 MS DMR THREE D 415E18

TJM THREE D 302A
MS DMR CORONADO 415A7

Gen. Code
Term Idx 2.56
30%
Fert Idx 4.99
15%

CED	BW	WW	YW	MILK	SC	REA	IMF	HPreg	STAY	MCW
EPDs 6.5	-0.1	37	59	8	0.25	0.28	0	9.42	3.33	2.7
Acc .32	.40	.39	.36	.22	.41	.41	.49	.17	.09	.20
%Rank 35%	45%	10%	20%	60%	75%	40%	75%	4%	10%	70%

BIRTHWEIGHT AND GROWTH
Here is one of the first Handsome Jack offspring being offered for sale. Handsome Jack 392J was the high selling bull in our Fall 2022 sale that sold to Johnston Brangus for \$23,000. He is out of one our top donors we purchased from Draggin M MS DMR BIG LAKE 415J122 who had a 352 day calving interval on 2 natural calves. He ranks in the top 40% in 11 EPD traits. REA/CWT 1.19.

Disposition
★★★★★
Act BW 70
Adj SC 31.29

38 BRIGGS BIG LAKE 541L15

R10547211 • 541L15 • P • GEN: 1 • 9/23/2023 • E

BWCC CROSS FIT 541B28 MC CROSSOVER 834Y
MC MS LUCIA 541U

BWCC BIG LAKE 111F4
UB10399796 BWCC MS ROCK SOLID 111C6

S A V ROCK SOLID 2251
MC MS STRYKER 111U25

NEVER SURRENDER OF SALACOA 803D9 MS BRINKS LOMBARDI 803S25
MC BOULDER 889Z14

BRIGGS NEVER SURRENDER 541J3
R10505028 OAKS MS ATLANTA 541C53

ATLANTA OF SALACOA 488Z
OAKS MS CSONKA 541T7

Gen. Code
Term Idx 4.26
5%
Fert Idx 4.52
30%

CED	BW	WW	YW	MILK	SC	REA	IMF	HPreg	STAY	MCW
EPDs 4.2	1.3	48	77	2	1.02	0.8	0.33	7.48	2.8	1.66
Acc .21	.20	.22	.28	.13	.32	.31	.38	.16	.06	.01
%Rank 70%	80%	2%	4%	95%	15%	2%	15%	15%	20%	65%

GROWTH, CARCASS AND FERTILITY
He is stout, thick and big boned as they come. He is a BWCC BIG LAKE 111F4 and out of Briggs Never Surrender 541J3 one of our top donors. She has a 366 day calving interval on two head all the while being flushed and producing top quality offsprings. He ranks in the top 40% in 13 EPD traits. ADJ WW 820, ADJ REA 15.63, REA/CWT 1.27

Disposition
★★★★★
Act BW 80
Adj SC 33.56

39 HARRIS EMPIRE 392L3

R10557507 • 392L3 • P • GEN: 5 • 10/5/2023 • E

TJM THREE D 302A	CB FINAL CUT 924X	Gen. Code
	OAKS MS PATTON 302X3	
DMR EMPIRE 795D12	MC JETHRO 00S3	Term Idx
R10323531	MS BRINKS UPPERCUT 795R9	
HARRIS FARMS	TCB CATAWBA WARRIOR R532	Fert Idx
	SVF MS 535S14	
MS SALACOA KHAN 392C15	LTD OF BRINKS 415T28	Disposition
R10305388	MS BRINKS CAPTAIN 392P74	

	CED	BW	WW	YW	MILK	SC	REA	IMF	HPreg	STAY	MCW
EPDs	7	-0.3	36	65	9	1.37	0.69	0.02	7.78	3.18	0.69
Acc	.35	.43	.41	.39	.30	.43	.43	.50	.23	.13	.22
%Rank	25%	35%	15%	15%	45%	4%	4%	70%	10%	15%	60%

BIRTHWEIGHT AND GROWTH
 He is a Empire son and a full sib to \$23,000 Handsome Jack 392J. His dam MS SALACOA KHAN 392C15 has produced over \$80,000 in progeny. Take advantage of these genetics as this is the last calf out of this great donor. He ranks in the top 35% in 13 EPD traits. REA/CWT 1.24



LOT 41 | CB New Standard 541L20

40 BRIGGS BIG LAKE 541L8

R10543253 • 541L8 • P • GEN: 1 • 9/13/2023 • E

BWCC CROSS FIT 541B28	MC CROSSOVER 834Y	Gen. Code
	MC MS LUCIA 541U	
BWCC BIG LAKE 111F4	S A V ROCK SOLID 2251	Term Idx
UB10399796	MC MS STRYKER 111U25	
BRIGGS RANCHES	MC BOULDER 889Z14	Fert Idx
	NEVER SURRENDER OF SALACOA 803D9 MS BRINKS LOMBARDI 803S25	
BRIGGS NEVER SURRENDER 541J3	ATLANTA OF SALACOA 488Z	Disposition
R10505028	OAKS MS ATLANTA 541C53	

	CED	BW	WW	YW	MILK	SC	REA	IMF	HPreg	STAY	MCW
EPDs	4.2	1.3	47	73	2	1.34	0.5	0.32	7.48	2.8	1.66
Acc	.33	.41	.40	.38	.25	.42	.43	.50	.22	.11	.20
%Rank	70%	80%	2%	5%	95%	5%	15%	20%	15%	20%	65%

GROWTH, CARCASS AND FERTILITY
 A BWCC BIG LAKE 111F4 son and out of Briggs Never Surrender 541J3 one of our top donors. She has a 366 day calving interval on two head all the while being flushed and producing top quality offsprings. He ranks in the top 35% in 12 EPD traits. ADJ WW 790,



Lot 41 Maternal Granddam | CB Ms Three D 541D5

41 CB NEW STANDARD 541L20

R10542109 • 541L20 • P • GEN: 1 • 9/20/2023 • A

CB ORACLE 468F15	CB TRADITION 63A	Gen. Code
	CB MS LTD 468Y12	
CB NEW STANDARD 817J3	CB THREE D 468C8	Term Idx
UB10481496	CRAZY K BLACKCAP 4036	
CAVENDER BRANGUS	SUHN'S FOUNDATION 331Z28	Fert Idx
	SF MISS LTD 909Z4	
CB MS BRICKHOUSE 541H20	TJM THREE D 302A	Disposition
R10450295	CB MS NORTH STAR 541Z47	

	CED	BW	WW	YW	MILK	SC	REA	IMF	HPreg	STAY	MCW
EPDs	5	0	40	65	8	1.1	0.29	0.06	8.83	3.55	0.91
Acc	.36	.47	.44	.37	.23	.42	.42	.50	.16	.09	.20
%Rank	55%	45%	10%	15%	60%	10%	40%	55%	5%	10%	60%

POWERFUL NEW STANDARD SON
 This powerful, heavier boned and thick New Standard son leads off the Cavender bulls at the Texas Alliance Sale. His donor dam is one we flushed as a virgin heifer. He is a natural calf and weaned at 620 lbs. His maternal granddam is the \$30,000 541D5 donor sold to Phillips at the 2022 Genetic Edge Sale. He records big growth, SC and Indexes.

42 CB PARAMOUNT 1671L14

UB10542006 • 1671L14 • P • GEN: UB2 • 8/18/2023 • E

CB CAPITAL GAIN 924D19	TJM THREE D 302A	Gen. Code
	CB MS HOMBRE 924Z11	
CB PARAMOUNT 7139H2	CB TRADITION 63A	Term Idx
UB10445139	EF EVER EXTENSE 7139	
CAVENDER BRANGUS	TJM THREE D 302A	Fert Idx
	MS SOUTHERN REAL DEAL 468W36	
CB MS THREE D-C8 1671F24	CB PASSPORT 803Y11	Disposition
UB10383796	LILY'S ROWENA 1671	

	CED	BW	WW	YW	MILK	SC	REA	IMF	HPreg	STAY	MCW
EPDs	3.9	0.3	37	64	4	0.35	0.24	0.08	10.17	3.8	6.14
Acc	.34	.42	.40	.33	.25	.34	.36	.43	.16	.10	.21
%Rank	70%	55%	10%	15%	90%	65%	50%	50%	2%	3%	85%

BIG GROWTH AND INDEXES
 He is a big growth Paramount son. His donor dam sold in last spring's Mature Cow Herd dispersal. We have 2 maternal sisters retained in the herd. He boasts big Indexes in addition to his growth.

Disposition
 ★★★★★
 Act BW 74
 Adj SC 38

Disposition
 ★★★★★
 Act BW 76
 Adj SC 36.34

43

GCB CASH FLOW 415L68

UB10549356 • 415L68 • P • GEN: UB2 • 10/12/2023 • E

GGP

S A V RESOURCE 1441

RITO 707 OF IDEAL 3407 7075

S A V BLACKCAP MAY 4136

Gen. Code

DMR CASH FLOW 535F30

UB10386538

MS DMR CORONADO 535A8

TJM CORONADO 535X

SVF MS 535M31

Term Idx

2.77

25%

GOLD CREEK BRANGUS

TJM CORONADO 535X

MS BRINKS LAMBERT 535T4

Fert Idx

4.87

20%

MS DMR CORONADO 415A6

R10254686

MS BRINKS BRIGHT SIDE 415R23

BRINKS BRIGHT SIDE 607L11

MISS BRINKS VAQUERO 415G

	CED	BW	WW	YW	MILK	SC	REA	IMF	HPreg	STAY	MCW
EPDs	5.7	-0.4	32	57	6	-0.08	0.03	0.18	5.84	2.54	-9.72
Acc	.35	.43	.42	.38	.29	.42	.42	.49	.24	.14	.21
%Rank	45%	35%	20%	20%	75%	95%	80%	30%	25%	30%	15%

CALVING EASE, BIG GROWTH, IMF AND INDEXES

This calving ease prospect is sired by Cash Flow. His dam is a full sister to the \$60,000 415A7 donor from Draggin M. He posts big growth, IMF and Indexes.

Disposition

★★★★★

Act BW

80

Adj SC

34.8



44

CB BIG CITY 817L45

UB10542082 • 817L45 • P • GEN: UB2 • 8/21/2023 • A

GGP

BWCC BIG TOWN 192B16

MC NUFF SAID 889T50

BWCC MS REVELATION 192W8

Gen. Code

MC BIG CITY 541G40

UB10449614

MC MS RESOURCE 541A4

S A V RESOURCE 1441

MC MS ROCK STAR 541X10

Term Idx

2.55

30%

CAVENDER BRANGUS

CB TRADITION 63A

CB CADENCE 63R

Fert Idx

6.27

2%

CB MS TRADITION 817J19

UB10489326

CB MS THREE D-C8 817F4

CB THREE D 468C8

CRAZY K BLACKCAP 4036

	CED	BW	WW	YW	MILK	SC	REA	IMF	HPreg	STAY	MCW
EPDs	7	-1.3	29	47	10	0.22	0.47	0.12	13.83	4.55	1.46
Acc	.37	.47	.44	.37	.24	.41	.42	.49	.20	.11	.21
%Rank	25%	20%	25%	40%	35%	80%	20%	40%	1%	1%	65%

CALVING EASE, BIG MILK, ELITE FERTILITY

He is a calving ease prospect sired by Big City. He is long sided and clean made. His dam is a maternal sib to New Standard and posts a 377 day calving interval on 2. He boasts big WW, Milk, REA, Terminal Index and elite Fertility.

Disposition

★★★★★

Act BW

63

Adj SC

35.37



LOT 44 | CB Big City 817L45

45

CB NEW STANDARD 1062L15

UB10541675 • 1062L15 • P • GEN: UB2 • 8/14/2023 • E

GGP

CB ORACLE 468F15

CB TRADITION 63A

CB MS LTD 468Y12

Gen. Code

CB NEW STANDARD 817J3

UB10481496

CB MS THREE D-C8 817F4

CB THREE D 468C8

CRAZY K BLACKCAP 4036

Term Idx

2.8

25%

CAVENDER BRANGUS

CB PR PRIME CUT 415E11

TJM THREE D 302A

CB MS NORTH STAR 415Z

Fert Idx

6.1

2%

CB MS PRIME CUT 1062J10

UB10489451

CB MS TRADITION 1062C

CB TRADITION 63A

EF SUNSHINE 1062

	CED	BW	WW	YW	MILK	SC	REA	IMF	HPreg	STAY	MCW
EPDs	5.4	-0.5	32	55	8	1.11	0.54	0.1	7.52	3.74	-2.61
Acc	.32	.41	.39	.37	.21	.42	.43	.50	.16	.09	.20
%Rank	50%	35%	20%	25%	60%	10%	15%	45%	10%	4%	40%

CALVING EASE, BIG GROWTH, REA AND ELITE FERTILITY

This calving ease prospect, by New Standard is out of a maternal sister to Longmire. His full brother sold last fall as a yearling for \$10,000. He big growth, SC, REA, Terminal Index and elite Fertility with +8 Milk.

Disposition

★★★★★

Act BW

72

Adj SC

37.58

46

CB PARAMOUNT 60L45

R10542164 • 60L45 • P • GEN: 1 • 8/18/2023 • A

GGP

CB CAPITAL GAIN 924D19

TJM THREE D 302A

CB MS HOMBRE 924Z11

Gen. Code

CB PARAMOUNT 7139H2

UB10445139

CB MS TRADITION 7139D2

CB TRADITION 63A

EF EVER EXTENSE 7139

Term Idx

2.73

25%

CAVENDER BRANGUS

COMMANDER 406B20

CRC NORTH STAR 9U8W3

MS BRINKS CSONKA 406T24

Fert Idx

4.4

30%

CB MS COMMANDER 60G22

R10417895

CB MS PASSPORT 60D15

CB PASSPORT 803Y11

CB MS CHISHOLM 60A2

	CED	BW	WW	YW	MILK	SC	REA	IMF	HPreg	STAY	MCW
EPDs	6.5	-0.2	37	51	10	0.5	0.13	0.24	7.46	2.66	0.21
Acc	.37	.47	.45	.37	.24	.41	.43	.50	.17	.10	.21
%Rank	35%	40%	10%	30%	35%	50%	65%	25%	15%	25%	55%

CALVING EASE, BIG GROWTH, IMF AND INDEXES

He is a calving ease prospect sired by Paramount. He boasts big growth, Milk, IMF and Indexes. His dam is sired by Commander.

Disposition

★★★★★

Act BW

70

Adj SC

35.34





LP COWBOY 803L7

R10546474 • 803L7 • P • GEN: 2 • 11/10/2023 • A



CB COWBOY CUT 627E5 PV ICON 655C2
CB MS NEW CONCEPT 627A2

Gen. Code

CB COWBOY 2H2

R10452433 CB MS THREE D 2D7

TJM THREE D 302A
CB MS BT 2U

Term Idx
2.37
35%

LAS PALOMAS RANCH

DMR SEAL 594C21 MS DMR GUARDIAN 415A11

Fert Idx
4.43
30%

CLVR MS SEAL 803G31

R10417725 CLVR MS NEW VISION 803C2 NEW VISION OF SALACOA 209Y2
MS BRINKS UNITAS 803U21

	CED	BW	WW	YW	MILK	SC	REA	IMF	HPreg	STAY	MCW
EPDs	2.9	0.4	30	53	7	0.68	0.32	0.05	4.54	2.39	-0.67
Acc	.35	.46	.42	.30	.22	.32	.33	.41	.14	.09	.21
%Rank	80%	55%	25%	30%	70%	35%	35%	60%	35%	35%	50%

BIG MIDDLED COWBOY SON

He is a big middled, deep flanked son of Cowboy. He stands on plenty of bone. His maternal granddam is on of the best New Vision daughters in the breed. He records big growth, SC, REA and Indexes.

Disposition



Act BW
90
Adj SC
36.79



LOT 47 | LP Cowboy 803L7



CB ORACLE 7139L15

UB10542068 • 7139L15 • P • GEN: UB2 • 8/26/2023 • A



CB TRADITION 63A CB HOMBRE 541T3
CB CADENCE 63R

Gen. Code

CB ORACLE 468F15

R10384844 CB MS LTD 468Y12

LTD OF BRINKS 415T28
MS BRINKS CADENCE 468P45

Term Idx
4.52
3%

CAVENDER BRANGUS

MC RANGER 129F21 MC MS RESOURCE 129A15

Fert Idx
5.51
10%

CB MS RANGER 7139J35

UB10502850 CB MS THREE D 7139E40 CB THREE D 468C8
EF EVER ENTENSE 7139

	CED	BW	WW	YW	MILK	SC	REA	IMF	HPreg	STAY	MCW
EPDs	2.4	0.4	36	80	10	1.1	0.9	0.34	9.54	3.95	-0.87
Acc	.37	.46	.44	.37	.25	.42	.41	.49	.20	.11	.21
%Rank	85%	55%	15%	3%	35%	10%	1%	15%	3%	2%	50%

ELITE YW, REA AND BIG MILK

This powerful Oracle son boasts elite YW, REA and Terminal Index with big WW, IMF, Fertility and Milk. Maternal sibs to his dam have fetched \$20,000 and \$11,500 in past sales.

Disposition



Act BW
70
Adj SC
37.07



LP CROSSROADS 468L

R10544530 • 468L • P • GEN: 6 • 8/27/2023 • E



BWCC CROSS FIT 541B28 MC CROSSOVER 834Y
MC MS LUCIA 541U

Gen. Code

DMR CROSSROADS 795F7

R10416850 MS DMR CORONADO 795C5

TJM CORONADO 535X
MS DMR JETHRO 795Y2

Term Idx
2.17
40%

LAS PALOMAS RANCH

CB CAPITAL GAIN 924D19 CB MS HOMBRE 924Z11

Fert Idx
4.3
35%

CB MS CAPITAL GAIN 468H

R10452528 CB MS NORTH STAR 468Z4 CRC NORTH STAR 9U8W3
MS SOUTHERN REAL DEAL 468W36

	CED	BW	WW	YW	MILK	SC	REA	IMF	HPreg	STAY	MCW
EPDs	2.9	1.6	34	61	0	1.01	0.13	-0.05	4.31	2.37	2.16
Acc	.33	.41	.39	.37	.25	.41	.42	.49	.21	.11	.21
%Rank	80%	85%	15%	15%	>95%	15%	65%	90%	40%	35%	70%

BIG GROWTH, SC AND FERTILITY

His dam was our \$10,000 choice at the Genetic Edge sale. Her maternal sibs have generated over \$105,000 in the Cavender Program. This big stout Crossroads son records big growth, SC and Fertility.

Disposition



Act BW
94
Adj SC
39.01



CB EMPOWER 6320L17

UB10542010 • 6320L17 • P • GEN: UB1 • 9/28/2023 • E



NEVER SURRENDER OF SALACOA MC BOULDER 889Z14
803D9 MS BRINKS LOMBARDI 803S25

Gen. Code
DDF

QVF PR EMPOWER 30G16

R10412716 T3 MS THREE D 30D

TJM THREE D 302A
MS SALACOA ATLANTA 30B5

Term Idx
4.73
2%

CAVENDER BRANGUS

V A R DISCOVERY 2240 DEER VALLEY RITA 0308

Fert Idx
3.44
65%

CRAZY K JOY 6320

EA18629003 EXAR JOY 12571 CONNEALY IMPRESSION
BASIN JOY 566T

	CED	BW	WW	YW	MILK	SC	REA	IMF	HPreg	STAY	MCW
EPDs	2.6	2.5	55	99	5	0.69	0.37	0.29	5.69	2.11	3.13
Acc	.33	.41	.40	.39	.24	.44	.44	.51	.19	.09	.20
%Rank	85%	95%	1%	1%	85%	35%	30%	20%	25%	45%	75%

ELITE GROWTH, BIG SC AND CARCASS

His full sister sold to ACE for \$15,000, another sold to Bland for \$13,000 and a maternal brother sold to RBR for \$20,000. Genetically valuable, this Empower son records elite growth with big SC, carcass and Terminal Index

Disposition



Act BW
76
Adj SC
37.03



LP CROSSROADS 535L

UB10544532 • 535L • P • GEN: UB2 • 8/31/2023 • E



BWCC CROSS FIT 541B28 MC CROSSOVER 834Y
MC MS LUCIA 541U

Gen. Code

DMR CROSSROADS 795F7

R10416850 MS DMR CORONADO 795C5

TJM CORONADO 535X
MS DMR JETHRO 795Y2

Term Idx
3.69
10%

LAS PALOMAS RANCH

CONNEALY CAPITALIST 028 PRIDES PITA OF CONANGA 8821

Fert Idx
3.45
65%

MS DMR CAPITALIST 535F

UB10386590 MS DMR CORONADO 535A8 TJM CORONADO 535X
SVF MS 535M31

	CED	BW	WW	YW	MILK	SC	REA	IMF	HPreg	STAY	MCW
EPDs	4.2	1.2	34	67	0	0.15	0.47	0.38	2.59	1.84	-3.67
Acc	.34	.42	.40	.37	.25	.41	.41	.49	.20	.11	.20
%Rank	70%	80%	15%	10%	>95%	85%	20%	15%	60%	55%	35%

BIG GROWTH, CARCASS AND TERMINAL INDEX

He is another powerful Crossroads son. His dam traces to the big time 535A8 donor now at Circle F. He weaned over 725 lbs. and boasts big growth, carcass and Terminal Index.

Disposition



Act BW
98
Adj SC
34.38

52 LP CROSSROADS 415L61

R10556008 • 415L61 • P • GEN: 6 • 9/5/2023 • E

MC CROSSOVER 834Y
MC MS LUCIA 541U

Gen. Code

MC CROSSOVER 834Y
MC MS LUCIA 541U

Gen. Code

DMR CROSSROADS 795F7
R10416850

MS DMR CORONADO 795C5

TJM CORONADO 535X
MS DMR JETHRO 795Y2

Term Idx
2.55

LAS PALOMAS RANCH

TJM THREE D 302A
OAKS MS PATTON 302X3

Fert Idx
30%

MS DMR CORONADO 415A7

TJM CORONADO 535X
MS BRINKS BRIGHT SIDE 415R23

Fert Idx
3.68

60%

	CED	BW	WW	YW	MILK	SC	REA	IMF	HPreg	STAY	MCW
EPDs	4	1.3	31	61	0	0.42	0.27	0.05	4.5	1.87	-3.58
Acc	.34	.43	.41	.39	.26	.43	.43	.51	.22	.12	.21
%Rank	70%	80%	20%	15%	>95%	60%	45%	60%	35%	50%	40%

BIG GROWTH AND TERMINAL INDEX

He is a big powerful Crossroads son and a paternal brother to the previous lot. He boasts big growth and Terminal Index. His dam is a daughter of 415A7, a full sister to the iconic 415A6 donor made famous at Draggin M.

Disposition
★★★★★
Act BW
84
Adj SC
35.08

53 LP CROSSROADS 468L82

R10556030 • 468L82 • P • GEN: 5 • 9/10/2023 • E

MC CROSSOVER 834Y
MC MS LUCIA 541U

Gen. Code

MC CROSSOVER 834Y
MC MS LUCIA 541U

Gen. Code

DMR CROSSROADS 795F7
R10416850

MS DMR CORONADO 795C5

TJM CORONADO 535X
MS DMR JETHRO 795Y2

Term Idx
2.28

LAS PALOMAS RANCH

NEW VISION OF SALACOA 209Y2
MS BRINKS BRIGHT SIDE 209L11

Fert Idx
3.35

70%

MS DMR PATTON 468X6

PATTON OF BRINKS 30T22
MS BRINKS BEAR BRYANT 468T64

Fert Idx
70%

	CED	BW	WW	YW	MILK	SC	REA	IMF	HPreg	STAY	MCW
EPDs	2.2	2	25	50	-1	0.16	0.33	0.15	1.96	1.14	-12.52
Acc	.34	.42	.40	.38	.26	.42	.42	.50	.21	.12	.22
%Rank	90%	90%	40%	35%	>95%	85%	35%	35%	65%	80%	10%

POWERFUL CROSSROADS SON

Plenty of power here from this Crossroads son. He records big YW and carcass. His dam is a New Vision daughter out of the great 468X6 donor.

Disposition
★★★★★
Act BW
33.79

54 CB EMPOWER 7709L16

UB10541714 • 7709L16 • P • GEN: UB1 • 9/28/2023 • E

NEVER SURRENDER OF SALACOA
MC BOULDER 889Z14

Gen. Code

NEVER SURRENDER OF SALACOA
MC BOULDER 889Z14

Gen. Code

QVF PR EMPOWER 30G16
R10412716

T3 MS THREE D 30D

TJM THREE D 302A
MS SALACOA ATLANTA 30B5

Term Idx
4.38

CAVENDER BRANGUS

BASIN PAYWEIGHT 1682
21AR O LASS 7017

Fert Idx
3.46

65%

HR EVERGREEN 7709
EA18873423

SJH FD 4268 OF 747 1010

B/R FUTURE DIRECTION 4268
DRMCTR/SH OBJECTIVE 747

	CED	BW	WW	YW	MILK	SC	REA	IMF	HPreg	STAY	MCW
EPDs	4.3	0.7	41	75	5	0.76	0.41	0.52	7.25	2.47	1.67
Acc	.33	.41	.39	.39	.24	.43	.43	.51	.18	.09	.20
%Rank	65%	65%	10%	4%	85%	30%	25%	5%	15%	30%	65%

ELITE YW, IMF AND TERMINAL INDEX

He is a UB1 prospect out of a Basin Payweight 1682 daughter. We have 2 full sisters retained in the herd. He boasts elite YW, IMF and Terminal Index with big WW, SC and REA.

Disposition
★★★★★
Act BW
74
Adj SC
35.53

55 PR PRIME CUT 894L2

R10546497 • 894L2 • P • GEN: 2 • 9/27/2023 • A

TJM THREE D 302A
CB FINAL CUT 924X

Gen. Code

TJM THREE D 302A
CB FINAL CUT 924X

Gen. Code

CB PR PRIME CUT 415E11
R10359393

CB MS NORTH STAR 415Z

CRC NORTH STAR 9U8W3
CB MS BLANDA 415X7

Term Idx
3.01

PENNRIDGE RANCH

T3 PRIMETIME 803D4
MS BRINKS LOMBARDI 803S25

Fert Idx
5.2

10%

PR MS PRIMETIME 894G3
R10430977

PR MS EXCEED 894E2

BWCC EXCEED 129B23
PR GAMECHANGER 894C3

	CED	BW	WW	YW	MILK	SC	REA	IMF	HPreg	STAY	MCW
EPDs	5	0.3	36	61	7	0.94	0.46	0.14	5.99	3.17	0.39
Acc	.37	.47	.45	.36	.26	.39	.41	.49	.20	.11	.21
%Rank	55%	55%	15%	15%	70%	20%	20%	40%	25%	15%	60%

BIG GROWTH, CARCASS AND INDEXES

He is a moderate and thick Prime Cut son. He records big growth, SC, carcass and Indexes all with a 76 lbs. birth weight and near breed average BW and CED EPDs.

Disposition
★★★★★
Act BW
76
Adj SC
34.48

56 CB EXPRESS 9237L30

R10542122 • 9237L30 • P • GEN: 1 • 10/22/2023 • N

BWCC MONUMENT 10D7
MC BOULDER 889Z14

Gen. Code

BWCC MONUMENT 10D7
BWCC MS RESOURCE 10A10

Gen. Code

DMR EXPRESS 415J134
R10480419

MS DMR BEACON 415E133

SUHN'S MAJESTIK BEACON 30C
MS DMR CORONADO 415A7

Term Idx
2.79

CAVENDER BRANGUS

SF BRICKHOUSE 909D9
SF MISS LTD 909Z4

Fert Idx
4.2

40%

CB MS BRICKHOUSE 9237G10
UB10438388

CB MS RAMON 9237D12

CB RAMON 415X27
EF FOREVER LADY 9237

	CED	BW	WW	YW	MILK	SC	REA	IMF	HPreg	STAY	MCW
EPDs	1.7	1.2	34	51	7	0.7	0.38	0.28	7.26	2.37	-4.26
Acc	.37	.47	.45	.36	.24	.41	.42	.50	.17	.09	.20
%Rank	90%	80%	15%	30%	70%	35%	30%	20%	15%	35%	35%

THICK AND MODERATE EXPRESS SON

He is a thick made Express son. We have a maternal sister by Modelo in the herd. His dam posted a 363 day calving interval on 3 while we owned her. He records big growth, SC, carcass and Terminal Index.

Disposition
★★★★★
Act BW
77
Adj SC
35.06

57 CB BIG CITY 817L49

UB10542083 • 817L49 • P • GEN: UB2 • 8/19/2023 • A

BWCC BIG TOWN 192B16
MC NUFF SAID 889T50

Gen. Code

BWCC BIG TOWN 192B16
BWCC MS REVELATION 192W8

Gen. Code

MC BIG CITY 541G40
UB10449614

MC MS RESOURCE 541A4

S A V RESOURCE 1441
MC MS ROCK STAR 541X10

Term Idx
3.42

CAVENDER BRANGUS

CB TRADITION 63A
CB CADENCE 63R

Fert Idx
6.01

2%

CB MS TRADITION 817J50
UB10489159

CB MS CAPITAL GAIN 817G8

CB CAPITAL GAIN 924D19
CRAZY K BLACKCAP 4036

	CED	BW	WW	YW	MILK	SC	REA	IMF	HPreg	STAY	MCW
EPDs	4.7	-0.2	33	52	9	0.39	0.46	0.44	13.73	4.4	0.47
Acc	.37	.47	.45	.38	.24	.42	.43	.50	.20	.11	.21
%Rank	60%	40%	20%	30%	45%	60%	20%	10%	1%	1%	60%

CALVING EASE, ELITE FERTILITY, +9 MILK

He is a calving ease Big City son. He boasts big growth, carcass and Terminal Index with elite Fertility and +9 Milk. He ratioed 133 on his IMF scan.

Disposition
★★★★★
Act BW
72
Adj SC
34.79



CB MCQUEEN 817L63

UB10563086 • 817L63 • P • GEN: UB1 • 8/8/2023 • E

BWCC CROSS FIT 541B28

MC CROSSOVER 834Y
MC MS LUCIA 541U

Gen. Code

BWCC MCQUEEN 192E24

UB10359871

BWCC MS CHILL FACTOR 192A60

S A V CHILL FACTOR 1418
MISS 4C LEAD GUN 192P4

Term Idx
2.55
30%

CAVENDER BRANGUS

CB THREE D 468C8

TJM THREE D 302A
MS SOUTHERN REAL DEAL 468W36

Fert Idx
5.55
5%

CB MS THREE D-C8 817F4

UB10383894

CRAZY K BLACKCAP 4036

44 CKR KING JAMES X005
MINDEMANN BLACKCAP 817

	CED	BW	WW	YW	MILK	SC	REA	IMF	HPreg	STAY	MCW
EPDs	6.4	-0.7	34	49	2	0.8	0.45	0.13	8.31	3.79	5.67
Acc	.23	.24	.24	.30	.14	.35	.35	.41	.15	.05	.01
%Rank	35%	30%	15%	35%	95%	25%	20%	40%	10%	4%	85%

CALVING EASE, BIG GROWTH, CARCASS, ELITE FERTILITY

He is a calving ease prospect and a maternal brother to New Standard. Maternal sibs have been responsible for over \$202,000 in sale for Cavenders. He writes big growth, SC, REA and Terminal Index with elite Fertility.

Disposition

★★★★

Act BW

75

Adj SC

35.43



PR PRIME CUT 129L35

R10546420 • 129L35 • S • GEN: 3 • 10/6/2023 • E

TJM THREE D 302A

CB FINAL CUT 924X
OAKS MS PATTON 302X3

Gen. Code

CB PR PRIME CUT 415E11

R10359393

CB MS NORTH STAR 415Z

CRC NORTH STAR 9U8W3
CB MS BLANDA 415X7

Term Idx
3.18
20%

PENNRIDGE RANCH

HOLLYWOOD OF SALACOA 23A53

NEW VISION OF SALACOA 209Y2
MS SVF PATTON 23Y66

Fert Idx
4.36
35%

PR MS HOLLYWOOD 129F14

R10378583

MB MS INFOCUS 129X2

MYTTY IN FOCUS
MC MS MADISON 129X4

	CED	BW	WW	YW	MILK	SC	REA	IMF	HPreg	STAY	MCW
EPDs	5.5	0.2	34	57	7	0.56	0.7	0.21	7.03	3.08	9.58
Acc	.34	.42	.40	.38	.27	.42	.43	.50	.21	.12	.22
%Rank	50%	50%	15%	20%	70%	45%	3%	30%	15%	15%	95%

ELITE REA, BIG GROWTH, IMF AND INDEXES

He is a Prime Cut son out of a full sister to Modelo who is a daughter of the great 129X2 donor. He records big growth, IMF and Indexes with elite REA.

Disposition

★★★★

Act BW

81

Adj SC

35.35



CB MAVERICK 1373L30

UB10542087 • 1373L30 • P • GEN: UB2 • 8/20/2023 • A

SF BRICKHOUSE 909D9

SUHN'S FOUNDATION 331Z28
SF MISS LTD 909Z4

Gen. Code

CB MAVERICK 1373H19

UB10445120

CB THREE D 1373C3

TJM THREE D 302A
RIVERBEND RITA Z1373

Term Idx
2.23
40%

CAVENDER BRANGUS

CB TRADITION 63A

CB HOMBRE 541T3
CB CADENCE 63R

Fert Idx
4.62
25%

CB MS TRADITION 1373J11

UB10489162

CB MS CAPITAL GAIN 1373G24

CB CAPITAL GAIN 924D19
RIVERBEND RITA Z1373

	CED	BW	WW	YW	MILK	SC	REA	IMF	HPreg	STAY	MCW
EPDs	7.9	-1.7	29	45	6	0.69	0.23	0.08	9.74	3.17	4.07
Acc	.36	.47	.44	.35	.23	.40	.41	.49	.17	.10	.21
%Rank	20%	15%	25%	45%	75%	35%	50%	50%	3%	15%	75%

CALVING EASE, BIG WW AND FERTILITY

This calving ease prospect is out of a first calf heifer who bore him at 23 months of age. He records big WW, SC and Fertility.

Disposition

★★★★

Act BW

66

Adj SC

35.33



GCB BIG TOWN 2L8

R10547952 • 2L8 • P • GEN: 4 • 9/19/2023 • A

MC NUFF SAID 889T50

MC JOHN WAYNE 165N3
MC MS EXTRAVAGANT 889P4

Gen. Code

BWCC BIG TOWN 192B16

R10266676

BWCC MS REVELATION 192W8

MC REVELATION 129T
MISS 4C LEAD GUN 192P4

Term Idx
1.62
60%

GOLD CREEK BRANGUS

CB PASSPORT 803Y11

MS BRINKS LAMBERT 803T6
MS BRINKS LAMBERT 803T6

Fert Idx
3.83
50%

CB MS PASSPORT 2B

R10275279

CB MS BT 2U

BURTIN'S TRANSFORMER 803G3
CB MS LUCKY 2L

	CED	BW	WW	YW	MILK	SC	REA	IMF	HPreg	STAY	MCW
EPDs	8.4	-1.4	18	31	8	0.62	0.19	0.09	9.52	2.47	0.75
Acc	.37	.46	.42	.37	.31	.38	.39	.45	.24	.16	.22
%Rank	15%	15%	60%	75%	60%	40%	55%	50%	3%	30%	60%

CALVING EASE BIG TOWN SON

This calving ease prospect is sired by Big Town. We purchased his donor dam in the 2015 Ideal Video Customer Appreciation Sale.

Disposition

★★★

Act BW

74

Adj SC

33.36



CB GUNSMOKE 415L51

UB10549680 • 415L51 • P • GEN: UB2 • 10/14/2023 • N

DMR CASH FLOW 535F30

S A V RESOURCE 1441
MS DMR CORONADO 535A8

Gen. Code

DDF

DMR GUNSMOKE 99H31

UB10462728

MS DMR EMPIRE 99F23

DMR EMPIRE 795D12
MS C STAR PATTON 99X31

Term Idx
1.94
50%

CAVENDER BRANGUS

GACC LAND LINE 102F1

SUHN'S BUSINESS LINE 30D26
MGR BLACKCAP 1002

Fert Idx
5.72
4%

CB MS LAND LINE 415H15

UB10452557

CB MS TRADITION 415D6

CB TRADITION 63A
CB MS BLANDA 415X7

	CED	BW	WW	YW	MILK	SC	REA	IMF	HPreg	STAY	MCW
EPDs	5.2	0.4	27	49	5	0.87	0.09	0.01	8.86	3.53	-3.17
Acc	.36	.47	.44	.37	.23	.42	.43	.50	.16	.09	.20
%Rank	55%	55%	30%	35%	85%	20%	75%	70%	5%	10%	40%

BIG GROWTH, SC AND ELITE FERTILITY

He is a Gunsmoke son with big growth, SC and elite Fertility. His ET maternal brother by Freightliner sold for \$9,500 last fall. He is the second natural calf of his donor dam.

Disposition

★★★★

Act BW

78

Adj SC

36.48



PR BURLY 30L8

R10546421 • 30L8 • P • GEN: 2 • 10/5/2023 • E

BWCC MONUMENT 10D7

MC BOULDER 889Z14
BWCC MS RESOURCE 10A10

Gen. Code

BWCC BURLY 889G40

R10444699

BWCC MS NUFF SAID 889Z24

MC NUFF SAID 889T50
MC MS 5175 BANDO 889P12

Term Idx
2.51
30%

PENNRIDGE RANCH

BWCC BIG TOWN 192B16

BWCC MS REVELATION 192W8
BWCC MS REVELATION 192W8

Fert Idx
4.5
30%

QVF MS BIG TOWN 30H9

R10438681

T3 MS THREE D 30D

TJM THREE D 302A
MS SALACOA ATLANTA 30B5

	CED	BW	WW	YW	MILK	SC	REA	IMF	HPreg	STAY	MCW
EPDs	2.9	1.3	36	57	10	0.86	0.26	0.07	10.63	2.94	-0.72
Acc	.33	.41	.39	.38	.24	.43	.43	.51	.20	.11	.21
%Rank	80%	80%	15%	20%	35%	20%	45%	55%	2%	20%	50%

BIG GROWTH, MILK AND INDEXES

He is a big growth Burly son. His dam is a Big Town daughter out of the \$60,000 30D donor. He also records big Milk, SC and Indexes.

Disposition

★★

Act BW

86

Adj SC

35.61

64 CB ORACLE 1062L22

UB10542157 • 1062L22 • P • GEN: UB2 • 8/27/2023 • A

<p>CB TRADITION 63A</p> <p>CB ORACLE 468F15 R10384844</p> <p>CAVENDER BRANGUS</p> <p>CB THREE D 75D34</p> <p>CB MS THREE D-D34 1062H15 UB10445260</p>	<p>CB HOMBRE 541T3 CB CADENCE 63R</p> <p>LTD OF BRINKS 415T28 MS BRINKS CADENCE 468P45 TJM THREE D 302A MB MS CAHILL 75A7</p> <p>R/M IRONSTONE 4047 R T R SUNSHINE 7104</p>
--	---

CED	BW	WW	YW	MILK	SC	REA	IMF	HPreg	STAY	MCW	
EPDs	3.5	0.1	43	73	11	0.42	0.56	0.53	8.61	3.8	-0.95
Acc	.37	.47	.45	.38	.27	.42	.42	.50	.20	.11	.21
%Rank	75%	50%	4%	5%	30%	60%	10%	5%	10%	3%	50%

Disposition
★★★★★

Act BW
69

Adj SC
35.51

Gen. Code
NHPC

Term Idx
4.52
3%

Fert Idx
5.41
10%

65 CB BOOT CUT 7062L151

UB10574739 • 7062L151 • P • GEN: UB1 • 9/23/2023 • N

<p>CB BOOT CUT 415E13</p> <p>PV BOOT CUT 535H R10470861</p> <p>CAVENDER BRANGUS</p> <p>G A R GREATER GOOD</p> <p>CB MS GREATER GOOD 7062J EA21159582</p>	<p>TJM THREE D 302A CB MS NORTH STAR 415Z</p> <p>CB FINAL CUT 924X MISS PV GUARDIAN 535Z41 G A R RASHLAND G A R SURE FIRE A5008</p> <p>QUAKER HILL RAMPAGE 0A36 COX 8HF6 RITA 50921</p>
---	---

CED	BW	WW	YW	MILK	SC	REA	IMF	HPreg	STAY	MCW	
EPDs	2.7	0.8	30	60	8	0.83	0.46	0.37	5.99	2.89	6.55
Acc	P	P	P	P	P	P	P	P	P	P	P
%Rank	85%	70%	25%	20%	60%	25%	20%	15%	25%	20%	85%

Disposition
★★★★★

Act BW
75

Adj SC
38.22

Gen. Code

Term Idx
%

Fert Idx
%

66 CB EXPRESS 1581L

R10542114 • 1581L • P • GEN: 1 • 9/25/2023 • A

<p>BWCC MONUMENT 10D7</p> <p>DMR EXPRESS 415J134 R10480419</p> <p>CAVENDER BRANGUS</p> <p>SF BRICKHOUSE 909D9</p> <p>CB MS BRICKHOUSE 1581H UB10459548</p>	<p>MC BOULDER 889Z14 BWCC MS RESOURCE 10A10</p> <p>SUHN'S MAJESTIK BEACON 30C MS DMR CORONADO 415A7 SUHN'S FOUNDATION 331Z28 SF MISS LTD 909Z4</p> <p>TJM THREE D 302A FWY 103R OF W1581 3701</p>
---	---

CED	BW	WW	YW	MILK	SC	REA	IMF	HPreg	STAY	MCW	
EPDs	4.7	-0.1	30	60	3	1.45	0.34	0.1	8.26	2.84	0.32
Acc	.37	.47	.45	.37	.24	.41	.42	.50	.16	.09	.20
%Rank	60%	45%	25%	20%	95%	3%	35%	45%	10%	20%	60%

Disposition
★★★★★

Act BW
70

Adj SC
39.7

Gen. Code
DDF NHPC

Term Idx
2.82
25%

Fert Idx
4.75
20%

67 PR BIG TOWN 129L27

R10546429 • 129L27 • P • GEN: 4 • 9/25/2023 • A

<p>MC NUFF SAID 889T50</p> <p>BWCC BIG TOWN 192B16 R10266676</p> <p>PENNRIDGE RANCH</p> <p>TJM THREE D 302A</p> <p>PR MS THREE D 129J19 R10491941</p>	<p>MC JOHN WAYNE 165N3 MC MS EXTRAVAGANT 889P4</p> <p>MC REVELATION 129T MISS 4C LEAD GUN 192P4 CB FINAL CUT 924X OAKS MS PATTON 302X3</p> <p>MB YELLOWSTONE 17Y2 MB MS INFOCUS 129X12</p>
--	--

CED	BW	WW	YW	MILK	SC	REA	IMF	HPreg	STAY	MCW	
EPDs	9.3	-1.5	38	61	10	0.82	0.63	0.32	14.23	3.77	9.53
Acc	.37	.46	.44	.35	.29	.35	.37	.44	.24	.15	.22
%Rank	10%	15%	10%	15%	35%	25%	10%	20%	1%	4%	95%

Disposition
★★★★★

Act BW
60

Adj SC
34.8

Gen. Code

Term Idx
3.75
10%

Fert Idx
4.64
25%

68 CB LONGMIRE 607L6

BB10551113 • 607L6 • P • GEN: BB • 10/9/2023 • N

<p>CB CAPITAL GAIN 924D19</p> <p>CB CAPITAL GAIN 103G13 UB10422502</p> <p>CAVENDER BRANGUS</p> <p>TJM THREE D 302A</p> <p>RECIPIENT DAM CM10551112</p>	<p>TJM THREE D 302A CB MS HOMBRE 924Z11</p> <p>SUHN'S CHISHOLM 331W45 44 RUBY X103 CB FINAL CUT 924X OAKS MS PATTON 302X3</p> <p>MB YELLOWSTONE 17Y2 MB MS INFOCUS 129X12</p>
---	---

CED	BW	WW	YW	MILK	SC	REA	IMF	HPreg	STAY	MCW	
EPDs											
Acc											
%Rank	%	%	%	%	%	%	%	%	%	%	%

Disposition
★★★★★

Act BW
72

Adj SC
34.68

Gen. Code
DDPC

Term Idx
%

Fert Idx
%

69 PR BIG TOWN 535L9

R10546487 • 535L9 • P • GEN: 4 • 10/12/2023 • A

<p>MC NUFF SAID 889T50</p> <p>BWCC BIG TOWN 192B16 R10266676</p> <p>PENNRIDGE RANCH</p> <p>HOLLYWOOD OF SALACOA 23A53</p> <p>PR MS HOLLYWOOD 535G7 R10410320</p>	<p>MC JOHN WAYNE 165N3 MC MS EXTRAVAGANT 889P4</p> <p>MC REVELATION 129T MISS 4C LEAD GUN 192P4 NEW VISION OF SALACOA 209Y2 MS SVF PATTON 23Y66</p> <p>BLANDA OF BRINKS 535R54 MS BRINKS NEW ERA 535N60</p>
---	---

CED	BW	WW	YW	MILK	SC	REA	IMF	HPreg	STAY	MCW	
EPDs	4.5	0.5	35	63	9	0.83	0.57	0.21	11.8	3.2	-6
Acc	.37	.47	.45	.38	.30	.41	.42	.49	.24	.15	.22
%Rank	65%	60%	15%	15%	45%	25%	10%	30%	1%	15%	30%

Disposition
★★★★★

Act BW
88

Adj SC
33.6

Gen. Code

Term Idx
3.36
15%

Fert Idx
5.13
15%

Disposition
★★★★★

Act BW
72

Adj SC
34.68

Disposition
★★★★★

Act BW
88

Adj SC
33.6



Lot 70 & 71 Sire | QVF PR Empower 30G16



CB EMPOWER 7709L15



UB10541713 • 7709L15 • P • GEN: UB1 • 9/26/2023 • E
 NEVER SURRENDER OF SALACOA MC BOULDER 889Z14
 803D9 MS BRINKS LOMBARDI 803S25
QVF PR EMPOWER 30G16
 R10412716 T3 MS THREE D 30D
 T3 MS THREE D 302A
 MS SALACOA ATLANTA 30B5
CAVENDER BRANGUS
 BASIN PAYWEIGHT 1682 21AR O LASS 7017
HR EVERGREEN 7709
 EA18873423 SJH FD 4268 OF 747 1010
 B/R FUTURE DIRECTION 4268
 DRMCTR/SH OBJECTIVE 747

	CED	BW	WW	YW	MILK	SC	REA	IMF	HPreg	STAY	MCW
EPDs	4.1	0.6	40	70	5	1	0.7	0.64	7.25	2.47	1.67
Acc	.33	.41	.39	.39	.24	.43	.43	.51	.18	.09	.20
%Rank	70%	65%	10%	10%	85%	15%	3%	2%	15%	30%	65%

ELITE CARCASS, BIG GROWTH
 His full sister sold for \$11,500 last fall and he records elite carcass traits with big growth, SC and Terminal Index.

Disposition
 ★★
 Act BW 88
 Adj SC 37.44



CB EMPOWER 7709L17



UB10542008 • 7709L17 • P • GEN: UB1 • 9/27/2023 • E
 NEVER SURRENDER OF SALACOA MC BOULDER 889Z14
 803D9 MS BRINKS LOMBARDI 803S25
QVF PR EMPOWER 30G16
 R10412716 T3 MS THREE D 30D
 T3 MS THREE D 302A
 MS SALACOA ATLANTA 30B5
CAVENDER BRANGUS
 BASIN PAYWEIGHT 1682 21AR O LASS 7017
HR EVERGREEN 7709
 EA18873423 SJH FD 4268 OF 747 1010
 B/R FUTURE DIRECTION 4268
 DRMCTR/SH OBJECTIVE 747

	CED	BW	WW	YW	MILK	SC	REA	IMF	HPreg	STAY	MCW
EPDs	4.3	0.6	40	71	5	1.32	0.41	0.42	7.25	2.47	1.67
Acc	.33	.41	.39	.39	.24	.43	.43	.51	.18	.09	.20
%Rank	65%	65%	10%	10%	85%	5%	25%	10%	15%	30%	65%

BIG GROWTH AND CARCASS
 He is a full brother to the previous lot. He posts big growth, SC, carcass and Terminal Index.

Disposition
 ★★
 Act BW 78
 Adj SC 39.98



CB MODELO 627L15

R10555036 • 627L15 • P • GEN: 2 • 10/9/2023 • E

BWCC BIG TOWN 192B16 MC NUFF SAID 889T50
 BWCC MS REVELATION 192W8
T3 MODELO 129H4
 R10439751 PR MS HOLLYWOOD 129F10
 HOLLYWOOD OF SALACOA 23A53
CAVENDER BRANGUS
 MB MS INFOCUS 129X2
 T3 MS THREE D 302A
 MS SOUTHERN REAL DEAL 468W36
CB MS THREE D 627G2
 R10416936 CB MS HOMBRE 627D
 CB HOMBRE 331Z7
 CB MS CHISHOLM 627Z2

	CED	BW	WW	YW	MILK	SC	REA	IMF	HPreg	STAY	MCW
EPDs	5.7	0.2	39	59	7	0.74	0.38	0.13	11.56	3.06	5.27
Acc	.20	.23	.22	.22	.09	.20	.21	.24	.09	.04	.02
%Rank	45%	50%	10%	20%	70%	30%	30%	40%	1%	15%	80%

CALVING EASE, BIG GROWTH, REA, INDEXES
 He is a calving ease Modelo son. A maternal brother sold for \$10,000 last fall out of his donor dam. He boasts big growth, SC, REA and Indexes.

Disposition
 ★★
 Act BW 70
 Adj SC 32.98



CB EXPRESS 1688L4



R10549819 • 1688L4 • P • GEN: 1 • 9/25/2023 • A
 BWCC MONUMENT 10D7 MC BOULDER 889Z14
 BWCC MS RESOURCE 10A10
DMR EXPRESS 415J134
 R10480419 MS DMR BEACON 415E133
 SUHN'S MAJESTIK BEACON 30C
CAVENDER BRANGUS
 MS DMR CORONADO 415A7
 SUHN'S AUGUSTUS 416Y14
 SUHN'S TRAIL BOSS 30B3 SUHN'S MISS PATTON 30X5
CB MS TRAIL BOSS 1688H2
 UB10459539 CB MS PASSPORT 1688C
 CB PASSPORT 803Y11
 DCF RITA 1688

	CED	BW	WW	YW	MILK	SC	REA	IMF	HPreg	STAY	MCW
EPDs	6.8	-0.4	21	41	2	1.36	0.32	0.36	7.09	2.67	0.12
Acc	.37	.47	.45	.37	.24	.41	.42	.50	.16	.09	.20
%Rank	30%	35%	50%	50%	95%	4%	35%	15%	15%	25%	55%

CALVING EASE, BIG CARCASS
 He is a calving ease Express son and his dam posts a 355 day calving interval on 3. He records carcass, SC and terminal Index. He ratioed 110 in his IMF scan.

Disposition
 ★★
 Act BW 70
 Adj SC 38.2



CB MAVERICK 1062L25



UB10542086 • 1062L25 • P • GEN: UB2 • 8/18/2023 • A
 SF BRICKHOUSE 909D9 SUHN'S FOUNDATION 331Z28
 SF MISS LTD 909Z4
CB MAVERICK 1373H19
 UB10445120 CB THREE D 1373C3
 T3 MS THREE D 302A
CAVENDER BRANGUS
 RIVERBEND RITA Z1373
 SUHN'S MAJESTIK BEACON 30C
 CB WRANGLER 561F3
 CB MS CHISHOLM 561B2
CB MS WRANGLER 1062J4
 UB10481640 CB MS TRADITION 1062D
 CB TRADITION 63A
 EF SUNSHINE 1062

	CED	BW	WW	YW	MILK	SC	REA	IMF	HPreg	STAY	MCW
EPDs	1.6	0.4	30	48	4	0.97	0.42	0.03	7.94	2.84	3.89
Acc	.35	.46	.43	.36	.22	.41	.41	.50	.16	.09	.20
%Rank	90%	55%	25%	35%	90%	15%	25%	65%	10%	20%	75%

BIG GROWTH AND REA
 His dam was good enough to flush as a virgin heifer. He records big growth, SC, REA and Terminal Index.

Disposition
 ★★
 Act BW 76
 Adj SC 36.24



CB EXPRESS 7139M

R10555398 • 7139M • P • GEN: 1 • 1/13/2024 • E



MC BOULDER 889Z14
BWC MONUMENT 10D7

MC BOULDER 889Z14
BWC MS RESOURCE 10A10

DMR EXPRESS 415J134

R10480419 MS DMR BEACON 415E133

SUHN'S MAJESTIK BEACON 30C
MS DMR CORONADO 415A7

CAVENDER BRANGUS

SUHN'S TRAIL BOSS 30B3

SUHN'S AUGUSTUS 416Y14
SUHN'S MISS PATTON 30X5

CB MS TRAIL BOSS 7139J14

UB10473079 CB MS TRADITION 7139E17

CB TRADITION 63A
EF EVER ENTENSE 7139

Gen. Code

Term Idx
3.68
10%

Fert Idx
4.79
20%

	CED	BW	WW	YW	MILK	SC	REA	IMF	HPreg	STAY	MCW
EPDs	5.3	-0.4	26	59	5	1.29	0.51	0.44	8.3	3.1	-1.48
Acc	.34	.42	.40	.37	.24	.42	.42	.50	.17	.09	.20
%Rank	50%	35%	35%	20%	85%	5%	15%	10%	10%	15%	50%

CALVING EASE, GROWTH, CARCASS

He is a calving ease Express son. His donor dam posts a 386 day calving interval on 2 while being flushed. He records big growth, SC, carcass and Indexes. His maternal grand-dam is a full sister to the dam of Paramount.

Disposition



Act BW
73
Adj SC
36.22



LOT 75 | CB Express 7139M



CB DEADWOOD 75M18

R10559734 • 75M18 • P • GEN: 1 • 1/12/2024 • E



SUHN'S TRAIL BOSS 30B3

SUHN'S AUGUSTUS 416Y14
SUHN'S MISS PATTON 30X5

CB DEADWOOD 60H41

UB10479455 CB MS THREE D 60D3

TJM THREE D 302A
BASIN LUCY 0060

CAVENDER BRANGUS

SF BRICKHOUSE 909D9

SUHN'S FOUNDATION 331Z28
SF MISS LTD 909Z4

CB MS BRICKHOUSE 75F18

R10393138 CB MS ONSTAR 75Y13

MC ONSTAR 924W4
MS BRINKS SUNDANCE 75R37

Gen. Code

Term Idx
3.65
10%

Fert Idx
4.78
20%

	CED	BW	WW	YW	MILK	SC	REA	IMF	HPreg	STAY	MCW
EPDs	3	0.9	41	76	4	1.32	0.6	0.16	6.99	3.21	4.11
Acc	.32	.41	.39	.37	.25	.43	.42	.50	.17	.10	.21
%Rank	80%	70%	10%	4%	90%	5%	10%	35%	15%	15%	75%

THICK AND POWERFUL DEADWOOD SON

He is a powerful Deadwood son. Two full brothers are lead bulls at the Cavenders Neches River sale. He is a maternal brother to the \$32,000 CB Tanker purchased by Dal Williamson last fall. His donor dam also sold last fall for \$14,500 to Chris Turner and his full sister, 75M10, was part of the Deadly Dozen last fall and sold to Michael Hurla for \$19,000. He posts big growth, SC, carcass and Indexes.

Disposition



Act BW
88
Adj SC
39.88



Lot 76 Full Sib | CB Deadwood 75M13



CB NEW STANDARD 541M

UB10549082 • 541M • P • GEN: UB2 • 1/25/2024 • A



CB ORACLE 468F15

CB TRADITION 63A
CB MS LTD 468Y12

CB NEW STANDARD 817J3

UB10481496 CB MS THREE D-C8 817F4

CB THREE D 468C8
CRAZY K BLACKCAP 4036

CAVENDER BRANGUS

CB MASTERPIECE 2051F

SUHN'S TRAIL BOSS 30B3
A CROSS RITA A2051

CB MS MASTERPIECE 541J15

UB10503476 CB MS THREE D 541D5

TJM THREE D 302A
CB MS NORTH STAR 541Z47

Gen. Code

Term Idx
3.06
20%

Fert Idx
5.68
4%

	CED	BW	WW	YW	MILK	SC	REA	IMF	HPreg	STAY	MCW
EPDs	7	-1.5	35	64	9	1.17	0.42	0.05	9.98	4	2.97
Acc	.35	.45	.43	.33	.22	.34	.36	.43	.16	.09	.20
%Rank	25%	15%	15%	15%	45%	10%	25%	60%	3%	2%	70%

CALVING EASE, BIG GROWTH, REA AND ELITE FERTILITY

This calving ease prospect is sired by New Standard. His donor dam is out of the \$30,000 541D5 donor sold to Phillips Ranch. He records big growth, SC, REA and elite Fertility all with +9 Milk.

Disposition



Act BW
67
Adj SC
36.81



Lot 77 Sire | CB New Standard 817J3

78

BAR X EXPRESS 675M

R10563616 • 675M • P • GEN: 2 • 2/14/2024 • A

GGP

BWCC MONUMENT 10D7

MC BOULDER 889Z14

BWCC MS RESOURCE 10A10

Gen. Code

DMR EXPRESS 415J134

R10480419

MS DMR BEACON 415E133

SUHN'S MAJESTIK BEACON 30C

MS DMR CORONADO 415A7

CSONKA OF BRINKS 30R4

MS BRINKS LOMBARDI 222S20

Term Idx

3.06

20%

BAR X BRANGUS

STONEWALL OF RRR 222W6

BAR X MS STONEWALL675K47

R10510258

BAR X MS ATLANTA 675H4

ATLANTA OF SALACOA 488Z

AC MS HOLLYWOOD 675F2

Fert Idx

4.88

20%

	CED	BW	WW	YW	MILK	SC	REA	IMF	HPreg	STAY	MCW
EPDs	6.3	-0.9	37	60	4	0.94	0.37	0.17	7.47	2.6	-12.27
Acc	.33	.46	.44	.32	.22	.33	.34	.42	.16	.11	.21
%Rank	35%	25%	10%	20%	90%	20%	30%	35%	15%	30%	10%

CALVING EASE, BIG GROWTH, CARCASS AND INDEXES

He is another calving ease prospect a big middled, thick Express son. He is out of a first calf heifer and arrived when she was 24 months old. He records big growth, SC, carcass and Indexes.

Disposition

★★★★★

Act BW

74

Adj SC

39.13

**LOT 78 | Bar X Express 675M**

79

CB ACE 1671M2

UB10548981 • 1671M2 • P • GEN: UB2 • 1/11/2024 • E

GGP

NEVER SURRENDER OF SALACOA

MC BOULDER 889Z14

803D9

MS BRINKS LOMBARDI 803S25

Gen. Code

ACE OF SPADES 406J

UB10476024

MS SALACOA CARCASS DSN 406E

TTR CARCASS DESIGN

TTR A6051 U0286 X6200

Term Idx

3.56

15%

CAVENDER BRANGUS

CB ORACLE 468F15

CB TRADITION 63A

CB MS LTD 468Y12

Fert Idx

5.22

10%

CB MS ORACLE 1671H15

UB10453501

CB MS THREE D 1671D5

TJM THREE D 302A

LILY'S ROWENA 1671

	CED	BW	WW	YW	MILK	SC	REA	IMF	HPreg	STAY	MCW
EPDs	5.1	-0.4	38	69	6	0.67	0.33	0.25	8.32	3.6	1.42
Acc	.33	.42	.40	.36	.23	.41	.42	.50	.16	.09	.20
%Rank	55%	35%	10%	10%	75%	35%	35%	25%	10%	5%	65%

CALVING EASE AND SISTER SOLD FOR \$21,000

He is another "do it all" calving ease prospect, this time sired by Ace. His full sister was part of the Deadly Dozen last fall and sold for \$21,000 to Bland Farms. He boasts big growth, SC, carcass and Indexes.

Disposition

★★★★★

Act BW

74

Adj SC

34.14

**Lot 79 Sire | Ace of Spaces 406J**

80

CB BIG LEAGUE 9237M25

R10559806 • 9237M25 • P • GEN: 1 • 1/12/2024 • E

GGP

BWCC BIG LAKE 111F4

BWCC CROSS FIT 541B28

BWCC MS ROCK SOLID 111C6

Gen. Code

DMR BIG LEAGUE 415J88

R10489638

MS DMR THREE D 415E18

TJM THREE D 302A

MS DMR CORONADO 415A7

Term Idx

3.33

15%

CAVENDER BRANGUS

CB ORACLE 468F15

CB TRADITION 63A

CB MS LTD 468Y12

Fert Idx

4.42

30%

CB MS ORACLE 9237J10

UB10481641

CB MS THREE D-C8 9237F4

CB THREE D 468C8

EF FOREVER LADY 9237

	CED	BW	WW	YW	MILK	SC	REA	IMF	HPreg	STAY	MCW
EPDs	6.6	-1	27	52	9	0.2	0.51	0.4	9.73	3.53	0.37
Acc	.31	.40	.38	.36	.22	.41	.41	.50	.17	.09	.20
%Rank	30%	20%	30%	30%	45%	80%	15%	15%	3%	10%	60%

CALVING EASE, BIG GROWTH AND CARCASS

This calving ease prospect is a long, clean made son of Big League. His donor dam is by Oracle and we have a flush of Silencer calves on the way out of her. He records big growth, carcass and Indexes.

Disposition

★★★★★

Act BW

75

Adj SC

31.18

**LOT 80 | CB Big League 9237M25**

81 CB EXPRESS 1671M6

R10549111 • 1671M6 • P • GEN: 1 • 2/17/2024 • N

<p>BWCC MONUMENT 10D7</p> <p>DMR EXPRESS 415J134 R10480419 MS DMR BEACON 415E133</p> <p>CAVENDER BRANGUS CB MASTERPIECE 2051F</p> <p>CB MS MASTERPIECE 1671K4 UB10503836 CB MS TRADITION 1671H4</p>	<p>MC BOULDER 889Z14 BWCC MS RESOURCE 10A10</p> <p>SUHN'S MAJESTIK BEACON 30C MS DMR CORONADO 415A7 SUHN'S TRAIL BOSS 30B3 A CROSS RITA A2051</p> <p>CB TRADITION 63A CB MS THREE D-C8 1671F24</p>
--	--

Gen. Code	
Term Idx	3.95
	10%
Fert Idx	4.94
	15%

	CED	BW	WW	YW	MILK	SC	REA	IMF	HPreg	STAY	MCW
EPDs	4.5	0	41	74	3	1.56	0.56	0.28	10.58	3.43	0.95
Acc	.37	.47	.44	.35	.22	.38	.39	.47	.16	.09	.20
%Rank	65%	45%	10%	5%	95%	2%	10%	20%	2%	10%	60%

CALVING EASE, BIG GROWTH, CARCASS AND INDEXES

This calving ease prospect is sired by Express. His Masterpiece dam records a calving interval of 346 days on 2. He writes big growth, SC, carcass and Indexes.

Disposition

★★★★

Act BW

72

Adj SC

38.25

82 CB ORACLE 63M3

R10559481 • 63M3 • P • GEN: 1 • 1/9/2024 • E

<p>CB TRADITION 63A</p> <p>CB ORACLE 468F15 R10384844 CB MS LTD 468Y12</p> <p>CAVENDER BRANGUS CB MASTERPIECE 2051F</p> <p>CB MS MASTERPIECE 63K4 UB10499315 CB MS ICON 63F</p>	<p>CB HOMBRE 541T3 CB CADENCE 63R</p> <p>LTD OF BRINKS 415T28 MS BRINKS CADENCE 468P45 SUHN'S TRAIL BOSS 30B3 A CROSS RITA A2051</p> <p>PV ICON 655C2 CB MS BENCHMARK 63D</p>
--	---

Gen. Code	
Term Idx	4.34
	4%
Fert Idx	4.97
	15%

	CED	BW	WW	YW	MILK	SC	REA	IMF	HPreg	STAY	MCW
EPDs	3.4	0	44	77	10	1.35	0.6	0.38	9.2	3.53	-0.66
Acc	.33	.41	.40	.39	.25	.42	.43	.51	.22	.11	.21
%Rank	75%	45%	4%	4%	35%	5%	10%	15%	4%	10%	50%

ELITE GROWTH, BIG CARCASS AND MILK

He is a powerful Oracle son. Maternal sibs to his Masterpiece dam have generated over \$110,000 in past sales. He boasts elite growth, SC and Terminal Index with big carcass, Fertility and Milk.

Disposition

★★★★

Act BW

78

Adj SC

40.15

83 CB BIG CITY 23M

R10549018 • 23M • P • GEN: 1 • 1/11/2024 • E

<p>BWCC BIG TOWN 192B16</p> <p>MC BIG CITY 541G40 UB10449614 MC MS RESOURCE 541A4</p> <p>CAVENDER BRANGUS PERFECT FIT OF SALACOA 468G57</p> <p>QVF MS PERFECT FIT 23J15 R10485476 QVF MS N SURRENDER 23G26</p>	<p>MC NUFF SAID 889T50 BWCC MS REVELATION 192W8</p> <p>S A V RESOURCE 1441 MC MS ROCK STAR 541X10 BWCC CROSS FIT 541B28 MS BRINKS NEW ERA 468P22</p> <p>NEVER SURRENDER OF SALACOA 803D9 MS SVF PATTON 23Y66</p>
---	--

Gen. Code	
Term Idx	2.7
	30%
Fert Idx	6.21
	2%

	CED	BW	WW	YW	MILK	SC	REA	IMF	HPreg	STAY	MCW
EPDs	5.1	-0.3	30	51	5	1.27	0.59	0.12	10.94	4.01	2.58
Acc	.33	.41	.39	.38	.22	.42	.43	.51	.20	.10	.20
%Rank	55%	35%	25%	30%	85%	10%	10%	40%	2%	2%	70%

CALVING EASE, ELITE FERTILITY, BIG GROWTH

He is a calving ease prospect sired by Big City. His dam was our \$13,000 choice in the 2022 Quail Valley Sale. He has 2 maternal brothers selling at Neches River, both are good. He records big growth, SC, REA and Terminal Index with elite Fertility.

Disposition

★★★★

Act BW

75

Adj SC

40.24

84 CB ORACLE 4D79M5

UB10555414 • 4D79M5 • P • GEN: UB2 • 1/16/2024 • E

<p>CB TRADITION 63A</p> <p>CB ORACLE 468F15 R10384844 CB MS LTD 468Y12</p> <p>CAVENDER BRANGUS CB CAPITAL GAIN 924D19</p> <p>CB MS CAPITAL GAIN 4D79G6 UB10422471 COX MISS LUCY 4D79</p>	<p>CB HOMBRE 541T3 CB CADENCE 63R</p> <p>LTD OF BRINKS 415T28 MS BRINKS CADENCE 468P45 TJM THREE D 302A CB MS HOMBRE 924Z11</p> <p>V A R RESERVE 1111 V N A R MISS LUCY 9153</p>
---	--

Gen. Code	CAPC
Term Idx	3.88
	10%
Fert Idx	5.08
	15%

	CED	BW	WW	YW	MILK	SC	REA	IMF	HPreg	STAY	MCW
EPDs	3.2	0.2	44	77	9	0.42	0.48	0.21	9.98	3.48	-3.84
Acc	.33	.41	.40	.39	.26	.43	.43	.51	.22	.12	.21
%Rank	80%	50%	4%	4%	45%	60%	15%	30%	3%	10%	35%

ELITE GROWTH, BIG CARCASS, INDEXES AND MILK

This Oracle son records elite growth, big carcass and indexes and +9 Milk. His maternal sister was a member of the Deadly Dozen and sold for \$7,000 last Fall to East Texas Cattle.

Disposition

★★★★

Act BW

74

Adj SC

37.04

85 CB ORACLE 3074M

UB10549057 • 3074M • P • GEN: UB2 • 2/1/2024 • A

<p>CB TRADITION 63A</p> <p>CB ORACLE 468F15 R10384844 CB MS LTD 468Y12</p> <p>CAVENDER BRANGUS CB COUNTY LINE 468H7</p> <p>CB MS COUNTY LINE 3074K9 UB10503979 CB MS THREE D 3074D</p>	<p>CB HOMBRE 541T3 CB CADENCE 63R</p> <p>LTD OF BRINKS 415T28 MS BRINKS CADENCE 468P45 GACC LAND LINE 102F1 CB MS TRADITION 468F21</p> <p>TJM THREE D 302A SAR LADY JAYE 3074</p>
---	---

Gen. Code	
Term Idx	4.93
	2%
Fert Idx	5.28
	10%

	CED	BW	WW	YW	MILK	SC	REA	IMF	HPreg	STAY	MCW
EPDs	4	-0.4	36	67	13	0.92	0.55	0.78	10.03	3.82	-2.43
Acc	.36	.46	.45	.38	.24	.41	.42	.49	.20	.11	.21
%Rank	70%	35%	15%	10%	15%	20%	10%	1%	3%	3%	45%

CALVING EASE, ELITE IMF, BIG MILK AND GROWTH

This calving ease prospect blows it out of the water on IMF scanning 6.9 and ranking in the breed's top 1%. His dam posts a 362 day calving interval on 2 and her maternal sister sold for \$27,000 to Soileau in the fall of 2023. He records big growth, Milk, SC, carcass and Indexes.

Disposition

★★★★

Act BW

65

Adj SC

37.1

86 CB EXPRESS 60M11

R10549065 • 60M11 • P • GEN: 1 • 2/1/2024 • A

<p>BWCC MONUMENT 10D7</p> <p>DMR EXPRESS 415J134 R10480419 MS DMR BEACON 415E133</p> <p>CAVENDER BRANGUS CB BRICKHOUSE 60G8</p> <p>CB MS BRICKHOUSE-G8 60K12 UB10500154 CB MS THREE D 60E18</p>	<p>MC BOULDER 889Z14 BWCC MS RESOURCE 10A10</p> <p>SUHN'S MAJESTIK BEACON 30C MS DMR CORONADO 415A7 SF BRICKHOUSE 909D9 CB MS PASSPORT 60C2</p> <p>TJM THREE D 302A CB MS HOMBRE 60B3</p>
--	---

Gen. Code	
Term Idx	2.88
	25%
Fert Idx	4.64
	25%

	CED	BW	WW	YW	MILK	SC	REA	IMF	HPreg	STAY	MCW
EPDs	4.5	0.2	36	60	5	1.36	0.47	0.1	8.02	2.78	-0.67
Acc	.36	.47	.44	.34	.21	.38	.39	.47	.15	.09	.20
%Rank	65%	50%	15%	20%	85%	4%	20%	45%	10%	25%	50%

BIG GROWTH, REA AND INDEXES

He is another good thick Express son. His dam posts a 356 day calving interval on 2. He records big growth, SC, REA and indexes.

Disposition

★★★★

Act BW

74

Adj SC

39.1

**CB ORACLE 63M2**

UB10555413 • 63M2 • P • GEN: UB2 • 1/21/2024 • E



CB TRADITION 63A

CB HOMBRE 541T3
CB CADENCE 63R

Gen. Code

CB ORACLE 468F15

R10384844

CB MS LTD 468Y12

LTD OF BRINKS 415T28
MS BRINKS CADENCE 468P45
SUHN'S TRAIL BOSS 30B3

Term Idx

4.11

10%

CAVENDER BRANGUS

CB MASTERPIECE 2051F

A CROSS RITA A2051

Fert Idx

5.42

10%

CB MS MASTERPIECE 63K8

UB10499327

CB MS BENCHMARK 63D

SF BENCHMARK 535A74
CB MS HOMBRE 63Y

	CED	BW	WW	YW	MILK	SC	REA	IMF	HPreg	STAY	MCW
EPDs	4.9	-0.7	41	72	12	1.2	0.61	0.32	9.74	3.8	0.26
Acc	.33	.41	.40	.39	.25	.43	.43	.51	.22	.11	.21
%Rank	60%	30%	10%	10%	20%	10%	10%	20%	3%	3%	55%

CALVING EASE, BIG GROWTH, CARCASS AND INDEXES

This calving ease Oracle son is also out of a Masterpiece daughter. Maternal sibs to his dam have returned \$146,000 in revenue in our program. He records big growth, SC, carcass and Indexes.

Disposition

Act BW

73

Adj SC

36.15

**CB LONGMIRE 9743M8**

R10559802 • 9743M8 • P • GEN: 1 • 1/17/2024 • E



CB CAPITAL GAIN 924D19

TJM THREE D 302A
CB MS HOMBRE 924Z11

Gen. Code

CB LONGMIRE 1062H12

UB10452753

CB MS TRADITION 1062C

CB TRADITION 63A
EF SUNSHINE 1062

Term Idx

3.24

20%

CAVENDER BRANGUS

SF BRICKHOUSE 909D9

SUHN'S FOUNDATION 331Z28

Fert Idx

4.6

25%

ETX MS BRICKHOUSE 9743G2

R10426350

CB MS FINAL CUT 9743E2

CB FINAL CUT 924X
CB MS HOMBRE 9743A

	CED	BW	WW	YW	MILK	SC	REA	IMF	HPreg	STAY	MCW
EPDs	3.4	0.2	36	68	3	1	0.37	0.13	8.71	3.03	5.48
Acc	.31	.41	.38	.36	.24	.42	.41	.50	.16	.09	.21
%Rank	75%	50%	15%	10%	95%	15%	30%	40%	10%	15%	80%

BIG GROWTH, REA AND INDEXES

His full sister sold to Chimney Rock Cattle Co last fall as a bred heifer. His donor dam was the \$13,500 choice of Brian Stover. He records big growth, SC, REA and Indexes.

Disposition

Act BW

85

Adj SC

39.08

**ETX EXPRESS 3076M**

UB10563939 • 3076M • P • GEN: UB2 • 2/10/2024 • A



BWCC MONUMENT 10D7

MC BOULDER 889Z14
BWCC MS RESOURCE 10A10

Gen. Code

DMR EXPRESS 415J134

R10480419

MS DMR BEACON 415E133

SUHN'S MAJESTIK BEACON 30C
MS DMR CORONADO 415A7

Term Idx

2.53

30%

EAST TEXAS CATTLE CO

TJM THREE D 302A

OAKS MS PATTON 302X3

Fert Idx

4.62

25%

CB MS THREE D 3076E3

UB10368385

SAR LADY JAYE 3076

CONNEALY CONSENSUS 7229
VAR LADY JAYE 0228

	CED	BW	WW	YW	MILK	SC	REA	IMF	HPreg	STAY	MCW
EPDs	3.7	0	31	52	5	1.04	0.31	0.14	7.37	3.04	3.87
Acc	.34	.46	.40	.33	.23	.34	.36	.43	.17	.10	.21
%Rank	75%	45%	20%	30%	85%	15%	35%	40%	15%	15%	75%

BIG GROWTH, REA AND INDEXES

We purchased his dam as yearling heifer from Cavenders. She has done us a nice job including this good Express son. He boasts big growth, SC, REA and Indexes.

Disposition

Act BW

86

Adj SC

A N N U A L C O M M E R C I A L H E I F E R S A L E

125 Head of Commercial Heifers

March 18, 2025

Selling Santa Gertrudis x Brangus and Santa Gertrudis x Hereford heifers

Females will be sold immediately after the bull sale.

A sheet with all pertinent information will be provided sale day.






You drive, we'll help steer

As a local cooperative, we share our profits with the Texans we serve. Since 2006, we've returned almost \$2 billion in combined cash and allocated equities to our members through our cooperative returns program. So, when you're ready to expand or enhance your ranching operation, try a partnership that really pays. **Together we're better.**

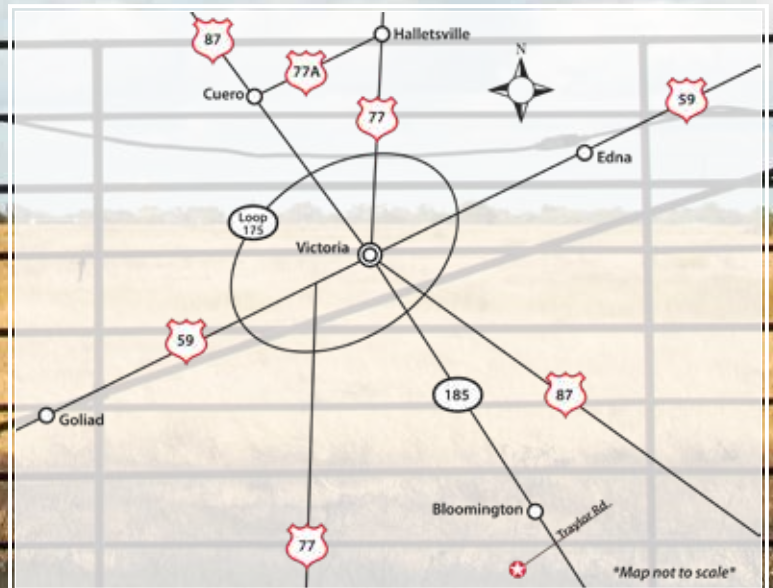
VICTORIA 361.582.9500

 **NMLS493828 | capitalfarmcredit.com**

BRIGGS RANCHES

PO Box 609
Bloomington, TX 77951

Presorted
First Class
US Postage
PAID
SlateGroup



DIRECTIONS

From Victoria - Off Loop 175 take Hwy 185 South to Bloomington. Then approximately 1.3 miles South of Bloomington, turn Right on Traylor Rd., enter main gate on paved road, travel approximately one mile West to ranch headquarters. Look for the signs.